



AA Kkuepkeere-AA

# SHRIDHAR UNIVERSITY

WAY TO TRANSFORM

Prospectus

great  
careers  
start  
here

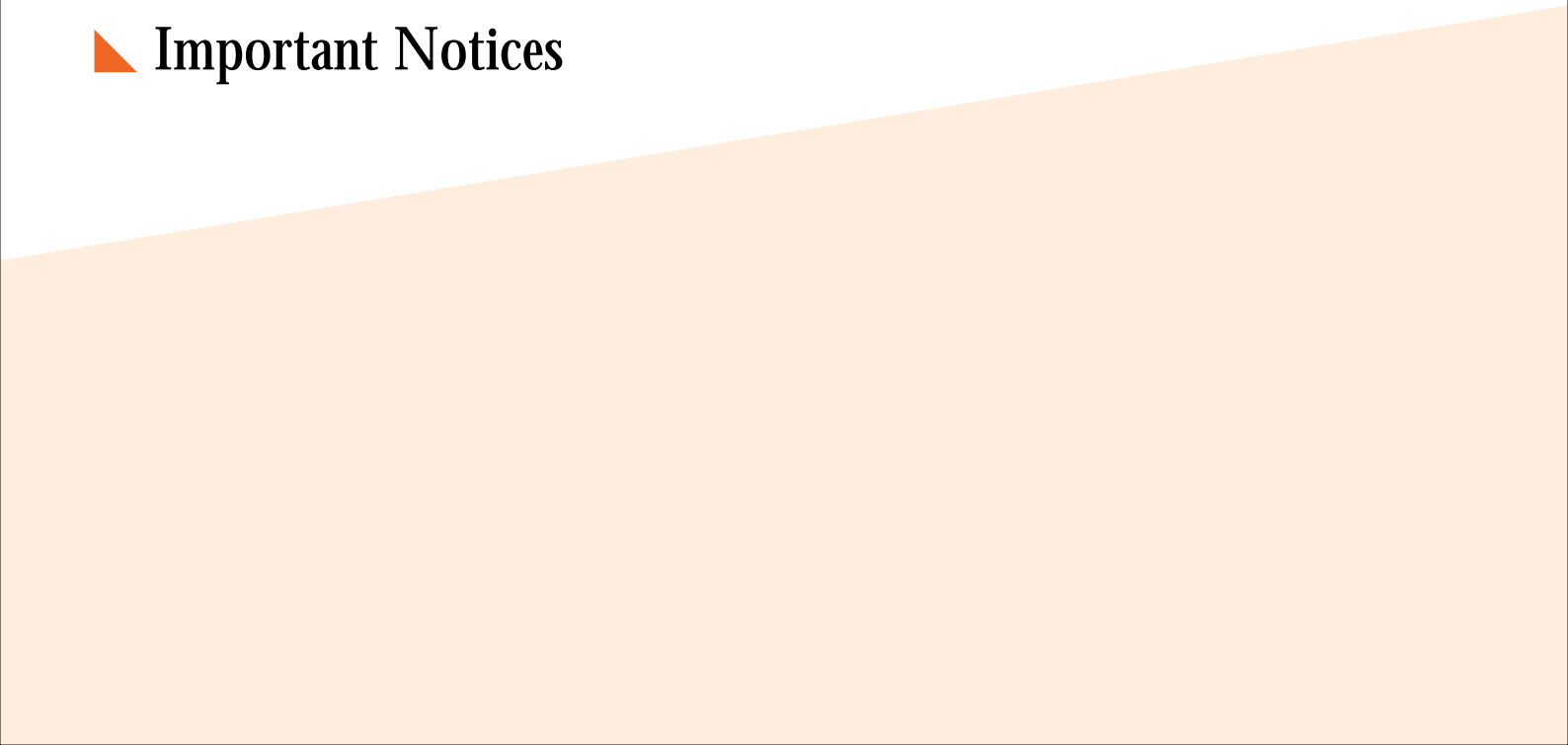


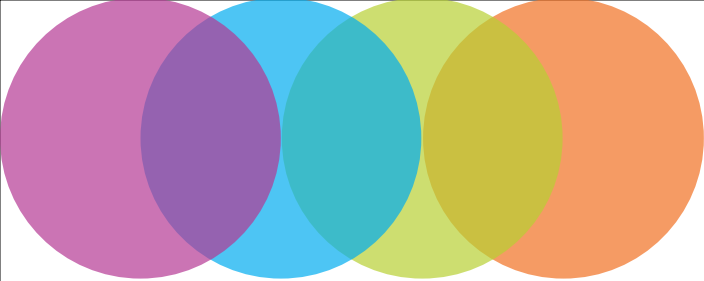
# Content Overview

---



- ▶ **Knowing Sridhar University**
- ▶ **Initiatives & Specialized Resource**
- ▶ **Infrastructure & Facilities**
- ▶ **Campus Life**
- ▶ **School & Discipline**
- ▶ **Admission Information**
- ▶ **How to Apply**
- ▶ **Important Notices**





## Chairperson Speaks

The world is facing challenging times against myriad problems of illiteracy, global warming and deep economic recession. By and large it is a result of all pervading ignorance in society and shortage of educational institutions geared up for local as well as global requirements. Unfortunately, we as a society have also shied away from taking tough decisions and hence we have failed to inspire young generation to grapple with formidable challenges of the present and the future times.

Today the challenges to mankind are awesome and mindboggling, but the tools with which we attempt to solve them remain old and obsolete. These must be replaced with new and the state of art. Nevertheless, we must stick to when it comes to our culture and heritage. Human values upon which our success depends remain unchanged since times immemorial. These are the age old virtues of hard work, honesty, courage, tolerance, creativity, self-discipline & self-abnegation. Standing on the bed rock of these ideals, moral principles and stellar human values, Shridhar University is here for a social transformation that we all seem to be waiting for. The sea change will come with technological and scientific innovation based on creativity and commonsense.

We realize the challenge in education today is not only about choosing between new and old methodologies and institutions, but also about choosing quality education which nurtures creativity, helps develop a healthy mind, encourages positive thinking and dynamism. It is our firm belief that education finally leads to a higher level of awareness , societal commitment, resource utilization, lab to land transfer of knowledge and creation of better and diverse career opportunities for students and scholars.

Significantly, modern workplace has become a dynamic environment where exchange of ideas and thoughts takes place every moment. Rational judgments replace old ideas and beliefs. Shridhar University is one such place, and much more. Students come here to share the Vision & Mission of University. We motivate them to develop professional skills which help them grow into global citizens without compromising with their cultural and religious ethos.

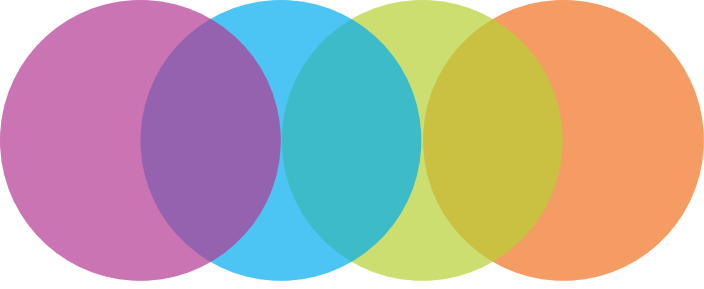
The University has taken up initiatives of national and global importance. Local and regional issues, including heritage promotion, shall also be addressed. We shall attempt to find solutions for the development of renewable green energy resources. Our focus would also be on water conservation methods and its recycling technologies. It shall be our endeavor that besides the classroom education, the university emerges a leader in the state of art research methods supported with industry linkages, school programs, consultancy services and collaboration with other institutions of repute in India and abroad.

Our university nurtures a stimulating environment of higher learning for intellectual, moral and physical development of students. They are apprised and enlightened on matters of major global concern like environmental crisis, political and economic disparities due to lack of global institutions, depletion of essential mineral and energy resources and lack of viable support systems for the developing nations. Such initiatives are generally expected from the developed world and we are happy to be an exception to this. Through innovative methodologies we shall ensure that everyone associated with university contributes to the idea of inclusive growth and dissemination of knowledge in society.

I extend a very warm welcome to our staff and other stake holders across university fraternity and urge them to make every effort to empower students with latest in knowledge and technique. I am sure that we shall become the world around us. At Shridhar University, we remain committed to the future of humanity and swear to choose hope and higher goals . I wish a very bright future for everyone associated with this Mission for transformation for the betterment of everyone.

With Warm Regards,

Vijay Pal Yadav  
Chairperson  
President Speaks  
Shridhar University Board of Management  
Shridhar University Academics



Br. (Dr) P S Siwach

## President Speaks

I thank you and congratulate you on choosing Shridhar University for higher education.

Shridhar University Pilani is a new generation multi-disciplinary University boasting of world class Infrastructure. It provides an environment that is conducive to teaching and learning, it is adequately supported by innovative academic & research programs and practices. We have experienced and quality faculty, the state of art laboratories & well planned residential spaces, along with a great eco-system for extracurricular & co-curricular activities. SU enjoys a unique position to facilitate the all round development of students personality to make them complete professional as well as good human beings.

I welcome you to Shridhar University fold & assure you that we will do our best to equip you with the knowledge and skills for your success in your life and in any career you choose.

## Core Team



Dr. Shivakar Sharma  
Dean Academics



Mr G. R Sani  
Registrar



Col. H.R Ruhil  
Controlor of Examination

## Message from Management

Shridhar University Understands the requirement of the new generation. New Generation is more aware & technology savvy. Shridhar University therefore will focus as developing the talents and potential of the youth by imparting more enterprenual skill and technology oriented course so that the coming generation of student becomes job creators. We believe in Learn to Lead

# SHRIDHAR UNIVERSITY ADVISORY BOARD

## DR. DHARAM V. GUPTA

(Educationist)  
B. Tech. (IIT-Kharagpur) M.A.S.C.  
(University of Waterloo. Canada)  
M.S.(Chemical Engineering, University of Pennsylvania. USA)  
Ph.D. (Chemical Engineering, Massachusetts, USA)  
Director, International Affairs, GGSIPU

## DR. KARAN SINGH YADAV

( Medical Science & Social Service)  
MBBS, M.S.,M.Ch.(CTVS),MNAMS,Former  
Superintendent,SMS Medical College,Jaipur,  
Former member, Governing Body AIIMS

## LT. GENERAL (RETD) SHANTANU CHAUDHARY

(Strategic Planning)  
Vice Chief of Staff ,Indian Army  
Defense consultant of Rolta Industries Ltd., INDIA

## LT. COL. (RETD.) B. S. YADAV

(Social Worker)  
B.Sc.,M.B.A.

## PROF. (DR.) P.K. UPPAL

(Scientist)  
Formerly Managing Director, BIBCOLD  
Ministry of science & Technology  
Government of India (New Delhi)

## Dr. MAIRAJUDDIN AHAMED

(Social Worker)  
Former Irrigation Minister, Former Chairman U.P.  
Export Corp.  
Sr. Member, Aligarh Muslim University Court

## MAJ. GEN. (Retd.) S. S. DHAKA

(National Service)

## MR. M. SAOIB

(Economist)  
(M.Sc - Economics) Canada,  
Fellow of Rajeev Gandhi Foundation  
Consultant of World Bank, UNO and European Union  
Chairman of India-China Economic and Cultural Council

## COL. (RETD.) MAHENDRA SINGH

(Golfer & Innovative Farmer)  
M.A.,Military Science

## PROF. (Dr.) P. S. YADAV

(Educationist)  
Deptt Of Life Sciences  
Manipur University, Imphal

## Mr. O. P. VAISH

(Legal Services)  
Sr. Advocate, Supreme Court of India

## SHRI H. S. BHARANA

(Industrialist)  
Civil Engineer  
Chairman, ERA Group of Companies

## PROF. CHANDRIKA PRASAD

(Educationist)  
(M.Sc - Economics) Canada,  
M.Sc.(Ag.), Ph.D.(Univ. of Massachusetts), Former  
VC, Raj. Agric. Univ. & Director general,  
U.P. Council of Agriculture Research

## Dr. S. S. KHANNA

(Educationist)  
M.Sc.(Ag.), Ph.D.(Illinois, USA), Former  
VC, NDU&T Faizabad & Advisor Planning Commission,  
GOI, New Delhi

## MR. NARENDRA SHUKLA

(Information Technology and Business Administration)  
B.Tech (NIT, Warangal) MBA (IIM, Kolkata)  
Vice President (Asia Pacific) CORDYS

## SHRI RAJENDRA SINGH

(Private Entrepreneur)  
B.Com.  
General Secretary of Entrepreneurs Association  
Nangloi, Delhi  
Shridhar Academic Council

# SHRIDHAR UNIVERSITY VISION

- To become an International Centre of excellence in the diversified fields of education by imparting state of the arts technical education, training and innovative research relevant to present and future requirements.
- To strive to develop an innovative centre of learning, designed to develop a blend of solutions after proper research into academic learning and put it in to practice, through a creative use of latest e-learning pedagogies and use of appropriate technologies.
- To become an international university, having global vision and a human perspective. To uphold a framework of basic cultural, social and behavioral principles & values, that nurture human communities and to further help achieve a sustainable development in the fields of economics, science & technology, social sciences and humanities.

# SHRIDHAR UNIVERSITY MISSION

- To provide a vibrant environment, compatible to a comprehensive and innovative learning for our students, to help them achieve a harmonious development.
- To achieve higher quality in the academic standards and to promote excellence in every activity we undertake.
- To provide an accessible and a cost effective quality education for every one. To help students develop latest professional skills and intellectual abilities infused with ethical and moral principles and a global perspective.
- To promote a dynamic intellectual environment, that nurtures cultural, social and ethnic diversity, allows for a free expression, develops personal integrity and to promote mutual respect for everyone in the society.
- To meet the serious challenges coming from anthropogenic nature of global warming.
- To promote and undertake initiatives which encourage a healthy living environment for everyone.
- To develop solutions for disaster management, water table depletions, waste water recycling and renewable energy resources, or for any other green energy initiatives required at global and regional levels.

# SHRIDHAR UNIVERSITY ETHICS & VALUE

- To seek excellence and quality in services, to generate a respect for all the individuals, to seek creativity in research and quality in education, to develop due diligence and a duty for care in the academic community.
- To help facilitate a total learning experience, to make an attempt to humanize it and impart education with a heart.
- To make our education relevant to true basic human needs and not merely turn it in to preparation for any future economic activity in the society. A common good that transcends particular interests of an individual or of any group and promotes a rational thought over any coercion or repression, as a basis for any decisions or any course of action.
- A culture of professional service, that respects and promotes the dignity of every individual, and safety of persons and peace in the society.
- To respect any diversity of opinions, varied experiences and cultural traditions and to establish these.
- To fulfill social responsibility in realizing university's mission to create, communicate and to relate to students' real needs. To apply and use the available knowledge in this world and share it with every one and/or to hold it in trust for the future generations.
- To seek excellence in the art of teaching, give rewards and scholarship, provide an expression to human creativity, and to serve the whole community.

# About Shridhar University

Shridhar University is a full-fledged ISO 9001:2008 Certified Self financed University established by the Government of Rajasthan vide Gazette dated 3/4/2010, notified by UGC under Section 2(f) of UGC Act, 1956 vide F.No. 8-3/2010(CPP-I/PU) dated 31 May' 2010.

Approved by Bar Council of India for conducting Law courses vide Letter No. BOI.D161/2012 (LE. Mtg. Nov.2011)

It is an initiative of Sarvhit Trust (Meerut), a nonprofit welfare organization. Founder and Chairperson of the University, Vijay Pal Yadav is a visionary, scholar and a dynamic leader who believes in transforming society through education and innovation.

Located close to two of India's most vibrant cities – New Delhi is 4 hours by road, and Jaipur is 3 hours by road. It is set in a lush green 60 acre campus on the Pilani-Chirawa highway No. 17 in the famed Shekhawati region of Rajasthan.

Prominent institutes such as BITS (Birla Institute of Technology and Science), CSIR Laboratory, CEERI (Central Electronics Engineering Research Institute) as well as the country's next assembly centre for the prestigious Brahmos Missiles are located in the immediate neighborhood of Shridhar University.

The campus is designed with the best of infrastructure and facilities to make student life a total transformational experience.

Shridhar University incorporates 11 schools for graduate and post-graduate degree programs, diplomas and certificates and for the pursuit of advanced research in the related areas of learning. These include Engineering College, Polytechnic, Law school and Business school.

Shridhar University is a world-class satellite city of learning where students, faculty and management form a close-knit proactive intellectual and cultural community.

University offers unique social & academic initiatives such as Earn While you Learn Program, Conferences, Workshops & Seminars, Student Mentorship programs, Industry oriented training programs in partnership with leading corporates, and an active placement cell.

The University is host to highly respected faculty

University has collaborations and cooperative ventures with foreign Institutions of Higher Learning, Chambers of Commerce and Industries, Indian Universities and Local Industries.

University is regularly executing NIESBUD and DST sponsored projects for self employment and is deeply committed to development of rural areas as part of her Corporate Social Responsibility Therefore its student driven holding hand organisation.



# EVENT AT SHRIDHAR UNIVERSITY







# Infrastructure & Facility

---



## Central Library

Central Library houses many items of academic interest including text books, reference books, scientific and technical journals, along with electronic and audio-visual resources. Students have full access to the complete range of library resources with speedy delivery system between the departments. E-Library facility is also available in the

## University Campus.

### Computer Labs

At Shridhar, we have a wide range of IT enabled services being made available to students, including high-speed fiber-optic network for the campus. We are also rolling wireless connectivity across the campus. All new students will be provided with an email account and a free training for major software applications in the beginning.

### Classrooms

Spacious, amphitheater style classrooms provide a supportive environment for dynamic and focused group discussion. Excellent technical design of these structures helps to support an effective delivery of lecture which is further augmented by integrated audio-visual teaching aid for any special purpose lectures, guest presentations, etc.

### Workshops and Laboratories

Shridhar University has state of the art laboratories and workshops. Our up to date infrastructure acts as an effective facilitator for the delivery of the planned curriculum. Infrastructure in various departments includes necessary laboratories such as Electrical and Electronics labs, Physics lab, Chemistry lab, X-ray room, Physio-Therapy labs, Engineering Drawing facilities and Engineering Workshops etc

### SMART CAMPUS

Biometric Smart Card enabled campus will regulate movement and shall be helpful in promoting security of all individuals and property on the campus. An integrated security system at Shridhar University ensures safety and a fully secure academic learning environment.

### MEDICAL FACILITIES

Often a healthy body makes a healthy mind. To ensure student being, Campus has primary health care center within the campus.

### FOOD COURT

Student Cafeteria / Canteen exist on the campus to meet the demand of all the students and staff members in the University. A large range of meals and dining options are available in the campus. We have basic coffee shop, juice bar, food vending machines and retail outlets. These include a fair number of Indian food (curry) type meal options.

# Campus life at Sridhar University

We offer a diverse and progressive environment for you to grow personally and academically.

Our campus provides a vibrant atmosphere and an unbeatable lifestyle.

## CULTURAL AND RECREATIONAL ACTIVITIES

The University has many student clubs and student societies designed for the development of our students. They are managed by the students themselves and nurture their creative and cultural talents. University also helps to organize and promote the art and dance club workshops for interested students

## Sport

We have extensive sports facilities and clubs. The Multipurpose Hall has a fully equipped gym and facilities for our clubs. University also has its own stadium which includes tennis courts, volleyball, badminton, cricket ground, basketball courts and yoga studios. Our facilities are for everyone to use, whether you're keeping fit or competing professionally.

## Dining

There is a large range of dining options at Shridhar University, with coffee shop, juice bar and food outlet.

## ATM Facilities

ATM Facility- Our Campus has ICICI & PNB ATM's in the campus.

## Library Facilities

The Shridhar central library houses good collection of books, journals, electronic and audio-visual resources. Students have access to full range of library resources.

## Parking

Car parking is available at our campus.

## Information Technology

At Shridhar we have a wide range of IT services available, including high-speed fibre-optics network across the campus. We are also rolling out wireless connectivity across the campus. All new students are provided with an email account and offered free training for major software applications. Many lectures are also captured into audio or audio/video streams that can be reviewed by students in their own time.

## Student Support

We're here to help you get the most out of your time at Shridhar, with a range of services including career advice, counseling, academic skills support and medical services.

We aim to provide our students with all the assistance they may need to achieve their best, through counseling and proper guidance.

## Careers and Employment

Our training & Placement officer help you determine and achieve your career goals by providing career advice and preparing you for the job market. We help you in your placement in industries.

## Counseling

We all experience difficult and confusing times in our lives. Shridhar University provides help and support to any concerns or issues you may have, from dealing with exam stress to financial worries, depression and relationship difficulties.

## Security and Safety

At Shridhar, we aim to create a safe and supportive study environment and have a security presence at all our campuses. At our campus, we also have an after-hours service to escort students to their cars or accommodations



# SCHOOL & DISCIPLINE

## School of Engineering & Technology

The University has Schools of Engineering offering Under Graduate, Post Graduate & Doctor programs in Engineering. The Schools are well equipped with workshops, laboratories & library & have qualified faculty members. The School of Engineering offers a unique module to all students in the Undergraduate level to enhance employability skill and to have a competitive edge to attain their career goal. The School also reviews the syllabus every six months to keep in pace with the developing technology and market requirement.

The School offers B.Tech of four years duration in following branches:

Civil, EE, EC, CSE, ME, Mining

The School also offers M.tech of two years duration and Ph.D.

### Courses Offered

#### Bachelor of Technology (B.Tech)

Admission to B.Tech programme will be through an all India online Entrance Test (SU B.Tech Entrance Test.) The procedures for application are appearing in the test is given in section 6.

B.Tech Admission: Allocation Break-Up

SU B.Tech Entrance Test 2015

70 % of the seats in B.Tech will be filled through the merit list based on the SU B. Tech Online & Offline Entrance Test.

SU B.Tech Online Entrance Test

Last Date of applying for : 10th May 2015  
Date of Online Examination : 19th to 21st May 2015  
Counseling & Admission Date : 8th to 10th June 2015  
Class commencement : 27th July 2015

SU B.Tech Offline Entrance Test

Last Date of applying for : 10th May 2015  
Date of Offline Examination : 24th May 2015  
Counseling & Admission Date : 8th to 10th June 2015  
Class commencement : 27th July 2015

JEE Main Score 2015

10% of the seats will be filled through the merit of JEE Main.

Through JEE Merit List

Last Date of applying for : 15 June 2015  
Counseling & Admission Date : 22nd & 23rd June 2015  
Class commencement : 27th July 2015

RPET Score 2015

10% of the seats will be filled through the merit of RPET, Conducted by the Government of Rajasthan.

Through RPET Merit List

Last Date of applying for : 15 June 2015  
Counseling & Admission Date : 22nd & 23rd June 2015  
Class commencement : 27th July 2015

SU State Entrance Test Score 2015

10% of the seats in B.Tech will be filled through the merit of SU State Entrance Test.

Through SU Merit List

Last Date of applying for : 15 June 2015  
Counseling & Admission Date : 22nd & 23rd June 2015  
Class commencement : 27th July 2015

In case the required no of seats are not filled through any one of the above categories; these will be filled from other categories'. Also in case of any Entrance Test is not conducted by the appropriate authority the same will be filled through the SU B. tech Entrance Test/ JEE Main

Eligibility:

10+2 with minimum of 50% aggregate marks (45% for SC/SC/OBC\*) in Mathematics, Physics and any one of Chemistry/ Computer Science /Biology

#### Bachelor of Technology (B.Tech)- Lateral Entry

Lateral entry to second year of B.Tech will be offered to three year diploma & B.SC degree holders.

Admission Procedure:

Diploma & B.Sc Degree holders are eligible for admission to the second year on the basis of merit in the Diploma & Degree examination.

Eligibility:

3 Year diploma in Engineering granted by Board of Technical Examination of a state government or B.SC with mathematic as one of the subjects or equivalent qualification with minimum of 50% marks (45% for SC/ST/OBC\*) aggregate.

#### Bachelor of Computer Application (BCA)

Admission will be based on marks obtained in qualifying examinations.

Eligibility:

10+2 or Equivalent  
Last date of Applying : 25th June 2015  
Counselling & Admission : 2nd July 2015  
Class Com : 27th July 2015

## Bachelor of Science in Information Technology (BSc.IT)

Admission will be based on marks obtained in qualifying examinations.

Eligibility:

10+2 or Equivalent  
Last date of Applying : 25th June 2015  
Counselling & Admission : 2nd July 2015  
Class Commencement : 27th July 2015

## Master of Technology (M.Tech)

M.Tech will be offered in Computer science and engineering.

Admission Process:

Admission to M.Tech program will be based on the marks obtained in candidate's B.Tech Programme. The University may also conduct an entrance test if necessary.

Eligibility:

B.Tech with minimum of 55% aggregate marks (50% for SC/ST/OBC\*) in related discipline. Candidate with MCA/M.Sc IT may also be considered for M.Tech in Computer Science/ Information Technology.

Last Date of applying for : 12 July 2015  
Counseling & Admission Date : 19 & 20th July 2015  
Class commencement : 03rd Aug 2015

## Master of Computer Application (MCA)

Admission will be based on marks obtained in qualifying examinations.

Eligibility:

Any Bachelor Degree, Candidate must have studied Mathematics/Statistic/ Computer Science as one of the subjects in 10+2 or degree level.

Last Date of applying for : 12th July 2015  
Counseling & Admission Date : 20th July 2015  
Class commencement : 03rd Aug 2015

## Master of Science in Information Technology (M.Sc IT)

Admission will be based on marks obtained in qualifying examinations.

Eligibility:

Any Bachelor Degree, Candidate must have studied Mathematics/Statistic/ Computer Science as one of the subjects in 10+2 or degree level.

Last Date of applying for : 12th July 2015  
Counseling & Admission Date : 20th July 2015  
Class commencement : 03rd Aug 2015

## PH.D in Engineering

Admission Process:

Admission in PH.D will be based on entrance test conducted by the University.

Eligibility

Master degree in respective discipline minimum with 55% marks or 6.25CGPA on a 10 point scale.

## School of Basic & Life Sciences

The school of Basic & Life Sciences offers programs in the field of science at Graduate, Postgraduate and Doctoral level. The school is well equipped with laboratories, library workshops and highly qualified faculties.

The School of Basic & Life Sciences offers unique modules to all students at undergraduate and postgraduate levels which enhance their academic as well as technical skills thereby providing a better competitive edge in order to attain their career goals. This Initiative prepares the students for competitive examinations, ensuring the best possible employments in their field with a bright future ahead.

Courses Offered

## Bachelor of Science (B.Sc Hons. Degree)

The B.Sc programs will be offered with combination of three major subjects among which one subject may be chosen for honours:

Group 1- B.Sc Life Sciences (Biology group)

(Any three of the following subjects may be pursued: - Botany, Zoology, Chemistry, Biotechnology, Microbiology, Bioinformatics, environmental biology)

Group 2 – Maths Group

(Any three of the following subjects may be pursued:- Mathematics, Statistics, Chemistry, Physics).

Group 3 – B.Sc Agriculture

Admission Process:

Admission will be based on the merit list prepared on the basis of marks obtained in 10+2 or equivalent examination.

Eligibility:

10+2 with PCB/PCM minimum of 45% marks (40% for SC/ST/OBC\*)

Last Date of applying for : 25th June 2015  
Counseling & Admission Date : 2nd July 2015  
Class commencement : 27th July 2015

## Master of Science (M.Sc.)

The M.Sc. programs will be offered in Life Sciences, Bioinformatics, Biotechnology, Biochemistry, Microbiology, Zoology, Botany, Environmental Sciences, Chemistry, Physics, Mathematics and Statistics & Horticulture.

Admission Process:

Admission will be based on the merit list prepared on the basis of marks obtained in B.Sc. (Minimum eligibility criteria is 45% marks, (40% for SC/ST/OBC\*))

## Eligibility

Life Sciences- B.Sc. in Life Sciences or allied area with any two of the following subjects: Chemistry/Botany/ Zoology/Microbiology/ Biotechnology/ Environmental Sciences/ Bioinformatics.

Bioinformatics- B.Sc. in Life Sciences or allied area with any two of the following subjects: Chemistry/Botany/ Zoology/Microbiology/ Biotechnology/ Environmental Sciences/ Bioinformatics.

Biotechnology- B.Sc. in Life Sciences or allied area with any two of the following subjects: Chemistry/Botany/ Zoology/Microbiology/ Biotechnology/ Environmental Sciences/ Bioinformatics.

Biochemistry- B.Sc. in Life Sciences or allied area with any two of the following subjects: Chemistry/Botany/ Zoology/Microbiology/ Biotechnology/ Environmental Sciences/ Bioinformatics.

Microbiology- B.Sc. in Life Sciences or allied area with any two of the following subjects: Chemistry/Botany/ Zoology/Microbiology/ Biotechnology/ Environmental Sciences/ Bioinformatics.

Zoology- B.Sc. in Life Sciences or allied area with any two of the following subjects: Chemistry/Botany/ Zoology/Microbiology/ Biotechnology/ Environmental Sciences/ Bioinformatics.

Botany- B.Sc. in Life Sciences or allied area with any two of the following subjects: Chemistry/Botany/ Zoology/Microbiology/ Biotechnology/ Environmental Sciences/ Bioinformatics.

Environmental Sciences- B.Sc. in Life Sciences or allied area with any two of the following subjects: Chemistry/Botany/ Zoology/Microbiology/ Biotechnology/ Environmental Sciences/ Bioinformatics.

Chemistry - B.Sc. with Chemistry as one of the subjects

Physics - B.Sc. with Physics as one of the subjects

Mathematics - B.Sc. / BA with Maths as one of the subjects

Statistics - B.Sc. with Statistic/ Mathematics as one of the subject.

Horticulture - B.Sc in Agriculture / Horticulture / Botany / Environment/ Genetics / Microbiology

Last Date of applying for : 12th July 2015

Counseling & Admission Date : 20th July 2015

Class commencement : 03rd Aug 2015

## Ph.D. in Science Subjects

Admission Process:

Admission in Ph.D. will be based on common research entrance test (CRET) conducted by the university comprising of written exam followed by an interview.

## Eligibility

Master degree in respective discipline with minimum of 55% marks or 6.25CGPA on a 10 point scale

## School of Business Studies

The School of Management Offers programs in the field of Management & Commerce at the Graduate, Postgraduate and Doctoral level. The School is well equipped with laboratories, library workshops & a highly qualified faculty.

The Management offers a unique module to all students in the Undergraduate level to enhance employability skill and to have a competitive edge to attain their career goal. This Initiative enhances the employability skills and also prepares the students for competitive examinations.

The School Offers BBA, B.Com of three year duration & MBA of Two years duration & PHD.

Courses Offered

## Bachelor of Business Administration (BBA)

Admission Process:

Admission will be based on marks obtained in 10+2 standard examinations.

Eligibility:

10+2 or Equivalent

Last date of Applying : 25th June 2015

Counseling & Admission : 2nd July 2015

Class Commencement : 27th July 2015

## Bachelor of Commerce (B.Com)

Admission Process:

Admission will be based on marks obtained in 10+2 standard examinations.

Eligibility:

10+2 or Equivalent

Last date of Applying : 25th June 2015

Counseling & Admission : 2nd July 2015

Class Commencement : 27th July 2015

## Master of Business Administration (MBA)

The MBA program will be offered with specialization in Finance Marketing & HR

Admission Procedure:

Admission will be based on marks obtained in graduation & score in any of the following entrance test: CMAT, MAT, CAT & XAT or qualifying examinations conducted by University.

Eligibility:

Any Bachelor Degree with minimum of 50% marks (45% marks for SC/SC/OBC\*)

Last Date of applying for : 12th July 2015

Counseling & Admission Date : 20th July 2015

Class commencement : 03rd Aug 2015

## PH.D in Management

Admission Process:

Admission in PH.D will be based on entrance test conducted by the University.

Eligibility:

Master degree in Respective discipline with 55% marks or 6.25 CGPA on a 10 point scale in the qualification recognized from the University.

## School of Humanities

The School Of School of Humanities Offers programs in the field of Arts at the Graduate, Postgraduate and Doctoral level. The School is well equipped with laboratories, library workshops & a highly qualified faculty. The School offers a unique module to all students in the Undergraduate level to enhance employability skill and to have a competitive edge to attain their career goal. This Initiative enhances the employability skills and also prepares the students for competitive examinations.

The School Offers BA, of three years duration, MA of two Years duration, & PHD.

Courses Offered

### Bachelor of Arts (BA)

The BA Programme will be offered in various combination of subject such as English, Mathematics, Statistic, Economics, Psychology, History, Political Science, Hindi, Public Administration, and Geography.

Admission Process:

Admission will be based on marks obtained in 10+2 standard examinations.

Eligibility:

10+2 or Equivalent

Last date of Applying : 25th June 2015

Counseling & Admission : 2nd July 2015

Class Commencement : 27th July 2015

### Master Arts (MA)

The MA program will be offered in English literature, History, Economics & Humanities.

Admission Process:

Admission will be based on marks obtained in graduation.

Eligibility:

Last Date of applying for : 12th July 2015

Counseling & Admission Date : 20th July 2015

Class commencement : 21st July 2015

## PH.D in Arts

Admission Process:

Admission in PH.D will be based on entrance test conducted by the University.

Eligibility:

Master degree in Respective discipline with 55% marks or 6.25 CGPA on a 10 point scale in the qualification recognized from the University.

## School of Legal Studies

The School Of School of Legal Studies offers programs in the field of Law at the Graduate, Postgraduate and Doctoral level. The School is well equipped with laboratories, library workshops & a highly qualified faculty.

Courses Offered

### LLB

Admission Process:

Eligibility:

10+2 or Equivalent with

Last date of Applying : 25th June 2015

Counseling & Admission : 2nd July 2015

Class Com : 27th July 2015

## School of Vocational Studies

The School Of School of Vocational Studies has been opened to offer programs in the field of various Skill Sectors at the Graduate, Postgraduate and Doctoral level. The School is well equipped with laboratories, library workshops & has tie ups with renowned Skill Knowledge Providers (SKP) and Sector Skill Councils. The School offers a unique module to all students in the Certificate/ Diploma / Advanced Diploma & Undergraduate level. This is based on a new initiative of the UGC to grant Bachelor of Vocation Degree by the Universities. This is a modular course. If a student exits after one year of training he is entitled to a Diploma, after two years of training to an Advanced Diploma and after three years training to a Bachelor of Vocation undergraduate degree. The student can exit and re-enroll and continue his/ her education at a later stage. This Initiative enhances the employability skills and also prepares the students for starting own business.

The School Offers B.Voc, of three years duration in various trades.

Courses Offered

### Bachelor of Vocation (B.Voc)

The B.Voc Programme will be offered in various trades

Admission Process:

Admission will be based on marks obtained in 10+2 standard examinations.

Eligibility:

10+2 or Equivalent

Last date of Applying : 25th June 2015

Counseling & Admission : 2nd July 2015

Class Commencement : 27th July 2015

Note: A course will be commenced if a minimum of 10 students join for UG and 5 for a PG course.

# Admission Rules:



## Admission to B.Tech through SU Online Entrance Test (70% of total seats)

Candidates seeking admission to first year B.Tech through SU B.Tech Online Entrance Test are required to fill Application Form A included in the Admission Kit. Candidates will receive confirmation from the Admission Office upon receipt of Application Form. Then the candidates are required to book the test date and test city in the SU Website through the Online Test Booking System (OTBS) as per the window period to be published on the University website and on University Notice Board. Admission Office will e-mail the hall ticket to the candidates.

### General Instructions

- ❖ All candidates must study the rules and regulations thoroughly before submitting the Application Form for SU B.Tech Online Entrance Test and they should ensure that they have passed the qualifying examination and they are eligible to seek admission as per the SU eligibility criteria.
- ❖ A candidate who has just appeared or is due to appear in the qualifying examination and his result is likely to be declared before the counseling can also appear for SU Entrance Test. However no candidate will be admitted to the course if the result is not declared before the counseling despite him qualifying the SU Entrance Test.
- ❖ If any board/university awards only grades and not equivalent percentage marks then the decision of the admission committee will be final regarding eligibility.
- ❖ Hall ticket will be verified during the test. One part of the hall ticket will be given to the candidate as proof of appearing in the test. Candidates are required to ensure that this is duly signed by the candidate and the test invigilator.
- ❖ In case he/she does not receive the hall ticket or his application is misplaced he/she can go to the examination centre and fill a fresh application form on or before the date of examination.

### Test Pattern:

Test duration is of 2 hours and the test consists of 120 multiple choice questions (MCQs) covering Physics, Chemistry, Mathematics and General Knowledge. The test syllabus and pattern are given in SU website and the test will be in English.

### Hall Ticket:

- ❖ The e-hall ticket will be sent to the e-mail ID provided in the application form.
- ❖ In case a candidate does not receive the hall ticket he should visit the JU website to obtain a duplicate hall ticket.

- ❖ In case of any problems, he should approach the examination centre a day before the exam date.

### Merit List

- ❖ Based on marks obtained by the candidates in the entrance test, SU will declare the merit list.
- ❖ The list will be displayed in last week of May at a date specified by SU on the University website.

### Counseling and Admission Procedure

- ❖ The list of candidates eligible to attend the counseling, counseling schedule, venue and other relevant details will be mailed to the candidates and will also be made available on the University's website [www.shridharuniversity.ac.in](http://www.shridharuniversity.ac.in).
- ❖ Only those candidates whose ranks are included in the counseling schedule will be allowed to attend the counseling on the specified dates.
- ❖ The physical presence of the candidate at counseling is mandatory. If a candidate is prevented by unavoidable circumstances from being physically present for the counseling, he /she may authorize a close relative to represent him/her at the counseling. This representative must carry the authorization letter from the candidate in the format given in Annexure-1 in the Admission Kit and bring all documents with full first year fee as specified.
- ❖ Absence of the candidate or his/her representative at the indicated reporting time and date may result in forfeiture of any claim for a seat.
- ❖ The choice of course made by the candidate/representative at the time of counseling will be final and binding.
- ❖ Only the candidate/representative will be allowed into the counseling hall.
- ❖ Candidates will be called in the order of their ranks in the merit list only and offered the seats available at that point of time.
- ❖ The number of candidates included in the merit list and also those called for the counseling will be more than the total number of seats available.
- ❖ Mere inclusion in the merit list and call for counseling does not guarantee admission to a course.



## Wait List .....

- ❖ When all the seats in a given branch are filled, candidates may choose to be waitlisted for that branch on payment of Rs.10,000/-. This amount will be adjusted in the fee in case the student is finally offered a seat. In case the student is not offered a seat, this amount will be refunded.
- ❖ However, in case the student is offered a seat for which he is waitlisted and does not take the seat, this amount will be forfeited.
- ❖ Candidates may also take admission in one branch and simultaneously get waitlisted for another branch. Such candidates are required to pay the first year fee for the course to which they are admitted. In case the student is offered seat in a branch for which he is waitlisted, his fee will be transferred to his new branch.
- ❖ The University officer in charge of counseling will close the waiting list for each course as soon as he/she is satisfied that an adequate number of candidates have been waitlisted for that branch.

## Documents to be submitted at the counseling centre .....

During counseling all candidates are required to submit the original and two sets of photocopies of following documents.

- 10th Standard Mark sheet for proof of date of birth.
- Marksheet of 10+2
- Caste Certificate in case of candidates from SC/ST/OBC categories.

- Demand Draft for first year fee
- Conduct/Character Certificate from the previous school/college.
- Transfer Certificate or Leaving Certificate issued by the school / college.
- Migration Certificate
- Four recent and identical passport size photographs and one stamp size photographs

Failure to submit the above document(s) might result in forfeiture of the seat.

Admission to B.Tech through SU B.Tech Entrance Test (Pen and Paper Test)

(10% of the total seats)

Candidates seeking admission to first year B.Tech through SU B.Tech through SU B.Tech Entrance Test (Pen and Paper Test) are required to send Application Form C included in the Admission Kit. The applications must reach the Admission Office as per the dates notified by the University from time to time at the following address:

The Director, Admissions

Shridhar University, Pilani Chirawa Road,  
Pilani, -333031, Rajasthan, India.

|  |  |
|--|--|
| SU B.Tech Entrance Test (Pen & Paper Test) | As per the dates being notified by the University from time to time. |
| Result Declaration                         | Within two days of the Pen & Paper Test                              |
| Counseling and Admission Date              | Within two days of the declaration of the result.                    |
| Class Commencement                         | As per the notification of the University from time to time.         |

## General Instructions: .....

- ❖ All candidates must study the rules and regulations thoroughly before submitting the Application Form for SU B.Tech Online Entrance Test and they should ensure that they have passed the qualifying examination and they are eligible to seek admission as per the SU eligibility criteria.
- ❖ A candidate who has just appeared or is due to appear in the qualifying examination and his/her result is likely to be declared before the counseling can also appear for SU B.Tech Entrance Test (Pen and Pencil Test). However, no candidate will be admitted to the course if result is not declared before the counseling despite him qualifying in SU B.Tech Entrance Test (Pen and Paper Test)
- ❖ If any board / University awards only grades and no equivalent percentage marks then the decision of admission committee will be final regarding eligibility.
- ❖ Hall ticket will be verified during the test. One part of the hall ticket will be given to the candidate as proof of appearing in the test. The same should be signed by the candidate and the test invigilator.
- ❖ In case he / she do not receive the hall ticket or his application is misplaced he / she can go to the examination centre and fill up a fresh application form on or before the date of examination.

## Test Pattern: .....

- ❖ Test duration is of 2 hours and the test consists of 120 multiple choice questions (MCQs) covering Physics, Chemistry, Mathematics and General Knowledge.
- ❖ The test syllabus and pattern are given in SU website and the test will be in English.

## Hall Ticket .....

The e-hall ticket will be sent to the e-mail ID provided in the application form. In case a candidate does not receive the hall ticket, he should visit the SU website to obtain a duplicate hall ticket. In case of any problem he/she should approach the examination centre a day before the exam date.

## Merit List .....

Based on marks obtained in the entrance test, Shridhar University will declare the merit list. The list will be displayed on the University website as per the date being notified by the University from time to time.

## Counseling and Admission Procedure for SU B.Tech Entrance Test (Pen and Paper Test) Candidates .....

- The list of candidates eligible to attend the counseling, counseling schedule, venue and other relevant details will be mailed to the candidates and will also be made available on the University's website [www.shridharuniversity.ac.in](http://www.shridharuniversity.ac.in).
- Only those candidates whose ranks are included in the counseling schedule will be allowed to attend the counseling on the specified dates.
- The physical presence of the candidate at counseling is mandatory.
- If a candidate is prevented by unavoidable circumstances from being physically present for the counseling, he /she may authorize a close relative to represent him/her at the counseling.
- This representative must carry the authorization letter from the candidate in the format given in Annexure-1 given in the Admission Kit and bring all documents all with full first year fee as specified.
- Absence of the candidate or his/her representative at the indicated reporting time and date may result in forfeiture of any claim for a seat.
- The choice of course made by the candidate/representative at the time of counseling will be final and binding.
- Only the candidate/representative will be allowed into the counseling hall. Candidates will be called only in the order of their ranks in the merit list and offered the seats available at that point of time.

- Those candidates whose rank list is within 4 lakh are eligible for direct admission to the B.Tech programme.
- The number of candidates included in the merit list and also those called for the counseling will be more than the total number of seats available. Mere inclusion in the merit list and call for counseling does not guarantee admission to a course.

## Wait List

- When all the seats in a given branch are filled, candidates may choose to be waitlisted for that branch on payment of Rs.10,000/-. This amount will be adjusted in the fee in case the student is finally offered a seat. In case the student is not offered a seat, this amount will be refunded.
- However, in case the student is offered a seat for which he is waitlisted and does not take the seat, this amount will be forfeited.
- Candidates may also take admission in one branch and simultaneously get waitlisted for another branch. Such candidates are required to pay the first year fee for the course to which they are admitted.
- In case the student is offered seat in a branch for which he is waitlisted, his fee will be transferred to his new branch.
- The University Officer-in-charge of counseling will close the waiting list for each course as soon as he/she is satisfied that an adequate number of candidates have been waitlisted for that branch.

## Documents to be submitted at the counseling centre

During counseling all candidates are required to submit the original and two sets of photocopies of following documents.

- ❖ 10th Standard Mark sheet for proof of date of birth.
- ❖ Mark sheet of 10+2
- ❖ Caste Certificate in case of candidates from SC/ST/OBC categories.
- ❖ Demand Draft for first year fee
- ❖ Conduct/Character Certificate from the previous school/college.
- ❖ Transfer Certificate or Leaving Certificate issued by the school / college.
- ❖ Migration Certificate
- ❖ Four recent and identical passport size photographs and one stamp size photographs
- ❖ Failure to submit the above document(s) might result in forfeiture of the seat.

Admissions to B.Tech through JEE Main (10% of total seats)

- Candidates seeking admission to first year B.Tech through JEE Main are required to send Application Form B included in the Admission Kit.

- Applications must reach the Admission Office on the date being notified by the University from time to time at the following address:

Shridhar University, Pilani Chirawa Road,  
Pilani, -333031, Rajasthan, India.

- Counseling for these candidates will be held on the date being notified by the University from time to time.
- Commencement of classes will be declared by the University from time to time.

### Counseling and Admission Procedure for JEE Candidates

- The list of candidates eligible to attend the counseling, counseling schedule, venue and other relevant details will be mailed to the candidates and will also be made available on the University's website [www.shridharuniversity.ac.in](http://www.shridharuniversity.ac.in).
- Only those candidates whose ranks are included in the counseling schedule are to attend the counseling on the specified dates.
- The physical presence of the candidate at counseling is mandatory.
- If a candidate is prevented by unavoidable circumstances from being physically present for the counseling, he /she may authorize a close relative to represent him/her at the counseling. This representative must carry the authorization letter from the candidate in the format given in Annexure-1 and bring all documents with full first year fee as specified.
- Absence of the candidate or his/her representative at the indicated reporting time and date may result in forfeiture of any claim for a seat.
- The choice of course made by the candidate/representative at the time of counseling will be final and binding. Only the candidate/representative will be allowed into the counseling hall.
- Candidates will be called in the order of their ranks in the merit list only and offered the seats available at that point of time.
- The number of candidates included in the merit list and also those called for the counseling will be more than the total number of seats available. Mere inclusion in the merit list and call for counseling does not guarantee admission to a course.

### Wait List

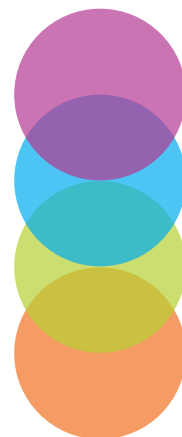
- ❖ When all the seats in a given branch are filled, candidates may choose to be waitlisted for that branch on payment of Rs.10,000/-. This amount will be adjusted in the fee in case the student is finally offered a seat.
- ❖ In case the student is not offered a seat, this amount will be refunded. However, in case the student is offered a seat for which he is waitlisted and does not take the seat, this amount will be forfeited.
- ❖ Candidates may also take admission in one branch and simultaneously get waitlisted for another branch. Such candidates are required to pay the first year fee for the course to which they are admitted. In case the student is offered seat in a branch for which he is waitlisted, his fee will be transferred to his new branch.
- ❖ The University officer in charge of counseling will close the waiting list for each course as soon as he/she is satisfied that an adequate number of candidates have been waitlisted for that branch.

### Documents to be submitted at the counseling centre

During counseling all candidates are required to submit the original and two sets of photocopies of following documents.

- ❖ JEE Result Card
- ❖ 10th Standard Mark sheet for proof of date of birth.
- ❖ Mark sheet of 10+2
- ❖ Caste Certificate in case of candidates from SC/ST/OBC categories.
- ❖ Demand Draft for first year fee
- ❖ Conduct/Character Certificate from the previous school/college.
- ❖ Transfer Certificate or Leaving Certificate issued by the school / college.
- ❖ Migration Certificate
- ❖ Four recent and identical passport size photographs and one stamp size photographs

Failure to submit the above document(s) might result in forfeiture of the seat.



## Admissions to B.Tech through RPET (10% of total seats)

List of candidates eligible to attend counseling, counseling schedule, venue and other relevant details will be mailed to the candidates and will also be made available on the University website [www.shridharuniversity.ac.in](http://www.shridharuniversity.ac.in).

- Only those candidates whose ranks are included in the counseling schedule will be required to attend counseling on the specified dates.
- Physical presence of the candidate at counseling is mandatory. If a candidate is prevented by unavoidable circumstances from being physically present for counseling, he/she may authorize a close relative to represent him/her.
- This representative must carry an authorization letter from the candidate in the format (Annexure 6A) to be downloaded from the SU website and bring all documents and full first year fee as specified.
- Absence of the candidate or his/her representative at the indicated reporting time and date may result in instantaneous forfeiture of any claim for a seat.
- The choice of course made by the candidate / representative at the time of counseling will be final and binding.
- Only the candidate/representative will be allowed into the counseling hall. Candidates will be called in order of their ranks and offered seats available at that point of time. They will be permitted to choose any of the seats available when their turn comes.
- Number of candidates included in the merit list and also those called for counseling will be more than the total number of seats available. This is to take care of any drop outs at the counseling stage. Mere inclusion in the merit list and call for counseling does not guarantee admission to a course.

## Wait List

- When all the seats in a given branch are filled, candidates may choose to be waitlisted for that branch on payment of Rs.10,000/-. This amount will be adjusted in the fee in case the student is finally offered a seat. In case the student is not offered a seat, this amount will be refunded.
- However, in case the student is offered a seat for which he is waitlisted and does not take the seat, this amount will be forfeited.
- Candidates may also take admission in one branch and simultaneously get waitlisted for another branch. Such candidates are required to pay the first year fee for the course to which they are admitted. In case the student is offered seat in a branch for which he is waitlisted, his fee will be transferred to his new branch.

- The University officer in charge of counseling will close the waiting list for each course as soon as he/she is satisfied that an adequate number of candidates have been waitlisted for that branch.

## Documents to be submitted at the counseling centre

During counseling all candidates are required to submit the original and two sets of photocopies of following documents.

- ❖ RPET Result Card
- ❖ 10th Standard Mark sheet for proof of date of birth.
- ❖ Mark sheet of 10+2
- ❖ Caste Certificate in case of candidates from SC/ST/OBC categories.
- ❖ Demand Draft for first year fee
- ❖ Conduct/Character Certificate from the previous school/college.
- ❖ Transfer Certificate or Leaving Certificate issued by the school / college.
- ❖ Migration Certificate
- ❖ Four recent and identical passport size photographs and one stamp size photographs

Failure to submit the above document(s) might result in forfeiture of the seat.



## Admission to B. Tech through lateral entry- Diploma/B.Sc. candidates

Candidates seeking admission to second year B.Tech through lateral entry are required to send Application Form C included in the Admission Kit.

Application must reach the Admission Office latest by last week of June at the following address.

To  
Director Admissions  
Shridhar University, Pilani Chirawa Road,  
Pilani, -333031, Rajasthan, India.  
Ph: 01596-510000

Counseling and admission for these candidates will be held in first week of July and firm dates will be notified on the university website. Counseling and admission procedure for B. Tech lateral entry candidates

Counseling schedule, venue and other relevant details will be mailed to the candidates and will also be made available on the university's website [www.shridharuniversity.ac.in](http://www.shridharuniversity.ac.in) Physical presence of the candidate at the counseling is mandatory. If a candidate is prevented by unavoidable circumstances from being physically present for counseling, he/she may authorize another individual to represent him/her.

This representative must carry an authorization letter from the candidate in the format (Annexure 6A) to be downloaded from the SU website and bring all documents and full first year fee as specified. Absence of the candidate or his/her representative at the indicated reporting time and date may result in instantaneous forfeiture of any claim for a seat.

The choice of course made by the candidate /representative at the time of counseling will be allowed into the counseling hall. Candidates will be called in order of their ranks and offered the seats available at those points of time. They will be permitted to choose any of the seats available when their turn comes.

Number of candidates included in the merit list and also those called for counseling will be more than the total number of seats available. This is to take care of any drop outs at the counseling stage. Mere inclusion in merit list and call for counseling does not guarantee admission to a course.

## Wait list

- When all seats in a given branch are filled, candidates may choose to be waitlisted for that branch on payment of Rs. 10000.00. This amount will be adjusted in fee in case the student is finally offered a seat.
- In case the student is not offered a seat this amount will be refunded. However in case the

student is offered a seat for which he has waitlisted and does not take the seat this amount will be forfeited.

- Candidates may also take admission in one branch and simultaneously get waitlisted for another branch. Such candidates are required to pay first year fee for the course to which they are admitted. In case the student is offered a seat in the branch for which he is waitlisted his fee will be transferred to his new branch.
- The University officer in charge of counseling will close the waiting list for each course as soon as he/she is satisfied that an adequate number of candidates have been waitlisted for a branch.

## Documents to be submitted at the counseling centre

During counseling all candidates are required to produce the original and two sets of photocopies of following documents:

- RPET Result Card
- 10th Standard Mark Sheet for proof of date of birth.
- Mark Sheet of Diploma/B.Sc.
- Caste Certificate in case of candidates from SC/ST/OBC categories
- Demand Draft for second year fee
- Conduct/Character Certificate from the previous college
- Transfer Certificate or Leaving Certificate issued by the college
- Migration Certificate
- Four recent and identical passport size photographs and one stamp size photographs

Failure to produce these above document(s) on day of admission by the date specified for this purpose may result in forfeiture of the seat. If the candidate is admitted, these documents will be retained by the University till candidate completes the course.

Request for withdrawal of the original documents submitted can be made only for genuine reasons in the prescribed application available at the admission office.



## Admission to Undergraduate Programs- B.Sc., BBA, BCA, B.Com, BA.....

Candidates seeking admission to first year undergraduate programs in B.Sc., BBA, BCA, B.Com. and BA are required to send Application Form C included in the Admission Kit. The applications must reach the Admission Office latest by last week of June at the following address:

To

Director Admissions

Shridhar University, Pilani Chirawa Road,

Pilani, -333031, Rajasthan, India.

Ph: 01596-510000

Counseling and admission for these candidates will commence in first week of July Date of commencement of Classes will be notified in the university website.

## Counseling and Admission Procedure.....

Counseling schedule, venue and other relevant details, will be mailed to the candidates and will also be made available on the University website [www.shridharuniversity.ac.in](http://www.shridharuniversity.ac.in). The physical presence of the candidate at the counseling is mandatory. If a candidate is prevented by unavoidable circumstances from being physically present for the counseling, he/she may authorize a close relative to represent him/her at the counseling.

This representative must carry the authorization letter from the candidate in the format (Annexure 6A) to be download from the SU website and bring all the documents and the full first year fees as specified. Absence of the candidate or his/her representative at the indicated reporting time and date may suit in the instantaneous forfeiture of any claim for a seat. The choice of course of course made by the candidate/ representative at the time of counseling will be final and binding.

Only the candidate /representative will be allowed into the counseling hall. Candidates will be called in the order of their ranks and offered the seats available at that point of time. They will be permitted to choose any of the seats available when their turn comes.

The number of candidates included in the merit list and also those called for the counseling will be more than the total number of seats available. This is to take care of any drop outs the counseling stage. Mere inclusion in the merit list and call counseling does not guarantee admission to a course.

## Wait List.....

- When all the seats in a given branch are filled, candidates may choose to be waitlisted for that branch on payment of INR 10000.00 This amount will be adjusted in fee in case the student is finally offered a seat.

- In case the student is not offered a seat this amount will be refunded. However in case the student is offered a seat for which he has waitlisted and the student does not take the seat this amount will be forfeited.
- Candidates may also take admission in one branch and simultaneously get waitlisted for another branch. Such candidates are required to pay the first year fee for the course to which they are admitted. In case the student is offered the seat in a branch for which he is waitlisted his fee will be transferred to his new branch.
- The University officer In-charge of counseling will close the waiting list for each course as closed as soon as he/she is satisfied that an adequate number of candidates have been waitlisted for a branch.

## Documents to be submitted at the counseling centre .....

During counseling all candidates are required to produce the original and two sets of photocopies of following documents. If the candidate is admitted, these documents will be retained by the University till the candidate completes the course. Request for withdrawal of the original documents submitted can be made only for genuine reasons in the prescribed application available at the Admission Office.

Failure to produce the document(s) on the day of admission or by the specified for this purpose will may result in forfeiture of the seat.

- 10th Standard Mark Sheet for proof of date of birth.
- Mark Sheet of 10+2
- Caste Certificate in case of candidates from SC/ST/OBC\* categories.
- Demand draft for first year fee
- Conduct/Character certificate from the previous school/college.
- Migration Certificate
- Four recent and identical passport size photographs and one stamp size photograph.



## Admission to post graduate programmes- M.Tech, M.Sc., MBA, MCA, M.Com and MA

Candidates seeking admission to first year post graduate programmes in M.Tech, M.Sc., MBA, M.Com and MA are required to send Application form D included in the Admission Kit.

Application must reach the admission office latest by first week of July at the following address:

To

Director Admissions

Shridhar University, Pilani Chirawa Road,

Pilani, -333031, Rajasthan, India.

Ph: 01596-510000

Counseling and admission for these candidates will commence in second week of July..

Class Commencement dates will be notified in the university website.

### Counseling and Admission Procedure

Counseling schedule, venue and other relevant details will be mailed to the candidates and will also be made available on the University's website [www.shridharuniversity.ac.in](http://www.shridharuniversity.ac.in)

Physical presence of the candidate at counseling is mandatory. If a candidate is prevented by unavoidable circumstances from being physically present for counseling, he/she may authorize a close relative to represent him/her at the counseling.

This representative must carry an authorization letter from the candidate in the format (Annexure 6A) to be downloaded from the SU website and bring all documents and full first year fee as specified. Absence of the candidate or his/her representative at the indicated reporting time and date may result in instantaneous forfeiture of any claim for a seat.

The choice of course made by the candidate /representative at the time of counseling will be final and binding.

Only the candidate/representative will be allowed into the counseling hall. Candidates will be called in order of their ranks and offered seats available at that point of time.

They will be permitted to choose any of the seats available when their turn comes.

### Wait List

- When all seats in a given branch are filled, candidates may choose to be waitlisted for that branch on payment of Rs. 10000. This amount will be adjusted in fee in case the student is finally offered a seat.
- In case the student is not offered a seat this amount will be refunded. However in case the student is offered a seat for which he has waitlisted and does not take the seat this amount will be forfeited.

- Candidates may also take admission in one branch and simultaneously get waitlisted for another branch. Such candidates are required to pay first year fee for the course to which they are admitted. In case the student is offered the seat in a branch for which he is waitlisted his fee will be transferred to his new branch.
- The University Officer in charge of counseling will close the waiting list for each course as soon as he/she is satisfied that an adequate number of candidates have been waitlisted for a branch.

### Documents to be submitted at the counseling centre

During counseling all candidates are required to produce the original and two sets of photocopies of following documents:

- 10th standard Mark Sheet for proof of date of birth
- Mark Sheet of 10+2
- Undergraduate Mark statement
- Score Card- CAT/MAT/XAT/CMAT(Applicable to MBA aspirants only)
- Caste Certificate in case of candidates from SC/ST/OBC\* categories
- Demand Draft for first year fee
- Conduct/character Certificate from the previous college
- Transfer certificate or leaving certificate issued by the school/college
- Migration Certificate
- Four recent and identical passport size photographs and one stamp size photograph

Failure to produce the above document(s) on the day of admission or by the date specified for this purpose may result in forfeiture of the seat.

If the candidate is admitted, these documents will be retained by the University till the candidate completes the course.

Request for withdrawal of the original documents submitted can be made only for genuine reasons in the prescribed application available at the admission office.

Students who have completed 4 years and passed all the subjects with minimum required grade are eligible to obtain a Bachelor's Degree in Engineering (B.Tech) from this University.



# ADMISSION TO Ph.D PROGRAMME

## General

The SU Ph.D Programme complies with UGC guidelines for Ph.D 2009. Admissions to Ph.D are taken through SU Ph.D Entrance Examination conducted by the University. Candidates having a valid UGC/CSIR/GATE/ Net score or qualified in M.Phil are exempted from appearing in the SU Ph.D entrance examination. The regulations also stipulate evaluation of the Ph.D protocol and the candidate by two committees. To ensure that only those candidates who are competent to carry out high quality research and make positive contribution to knowledge in their chosen field are allowed to register for Ph.D research programme at the University, selection is controlled by the president through following committees:

- University Research Committee
- Research Protocol Evaluation Committee (RPEC) at each department/constituent college.

Applications for Ph.D programme are received throughout the year. The SU Ph.D Entrance Exam is conducted once a year in July. The candidates may proceed with literature survey, problem identification and protocol evaluation process and other formalities. Registration to Ph.D programme will be confirmed after the candidate passes the SHRIDHAR University Ph.D Entrance Examination. Candidates can download the Ph.D application from SU Website.

## Eligibility:

Masters degree with a minimum of 55% marks.

## Types of candidates for research:

- Full time research scholars who will carry out their research full time on the campus. Normally each of the full time research scholars will receive a scholarship from the University Research Grant/UGC/AICTE/a sponsoring school/agency or a teaching assistantship from the school/department to cover his living expenses and expenditure on his research work.
- Part time internal candidates (applicable to working faculty members in any of the Departments/Schools of SU).
- External candidates who will register with the university complete the mandatory residential and credit requirements as laid down and will be then be permitted to continue their research at their place of work, if approved as a Research School by the University. They will make a presentation to the Research Committee/RPEC at the University/constituent school through which they have registered, on the progress of their research work once every six months (At the end of each semester).

## Contact details:

Dr Pooja Pant

SU Ph.D Coordinator

SHRIDHAR University

Chrawa- Pilani Road

Pilani- 333031 Rajasthan, India

E-mail : [phd@shridharuniversity.ac.in](mailto:phd@shridharuniversity.ac.in)





# HOW TO APPLY FOR VARIOUS COURSES

The candidate can apply through any of the following options:

Download application form from website and submit the duly filled in application form along with a Demand Draft in favour of "SHRIDHAR University" payable at Chirawa.

To

Director Admissions

Shridhar University, Pilani Chirawa Road,

Pilani, -333031, Rajasthan, India.

Ph: 01596-510000

Candidates applying for B.Tech programme through the SU B.Tech entrance test need to enclose an additional DD of Rs.500 towards the Entrance Test fee.

Also attach the relevant documents as mentioned in point 6 below (refer to application for enclosures)

❖ Forms can also be filled online at [www.shridharuniversity.ac.in](http://www.shridharuniversity.ac.in)

❖ Prospectus including application forms are available at the following places and can be bought by paying cash of Rs.1100 (In case of candidates applying for B.Tech programme through the additional DD of Rs.400/-)

a. Select branches of Axis Bank. Visit SU website to know the outlets.

b. Director Admissions, Shridhar University, Pilani Chirawa Road, Pilani, -333031, Rajasthan, India, by paying cash as mentioned above.

❖ Documents to be submitted with the form (Refer the respective application forms)

i) 10th Standard Mark Sheet

ii) 12th Standard Mark Sheet (if applicable)

iii) Graduate examination marks statements (if applicable)

iv) Post graduate examination marks statements (if applicable)

v) Score Card of RPET/JEE (Main) 2015/any other state or national level entrance test (if applicable)

vi) Score card of CMAT/MAT/CAT/GATE/any other state or national level entrance test (if applicable)

❖ Upon receipt of your Application Form with demand draft, an e-mail will be sent to your e-mail address. If in case you don't receive a confirmation, you may call @ 01596-510000 or mail us at [admission@shridharuniversity.ac.in](mailto:admission@shridharuniversity.ac.in) to find out the status of your application form.

## Guidelines

- It is mandatory to provide your e-mail address (clearly) as it will be used by the admission office for further correspondence and communication.
- No need to attach any original Mark sheets/testimonials with the application form at this stage.
- University/board/marks filled in the application form will be considered for all procedures related to admission.
- Any discrepancy found during original document verification may result in cancellation of admission.
- Duly filled in application form together with photocopies of the related documents should be submitted/sent to the following address:

To

Director Admissions

Shridhar University, Pilani Chirawa Road,

Pilani, -333031, Rajasthan, India.

Ph: 01596-510000

- Incomplete forms may be rejected.
- Details regarding payment of fee at the time of admission, allotment of hostel and date, time and venue for commencement of the academic session will be mentioned in the admission letter.
- The offer of admission may be cancelled if any of the conditions are not fulfilled by the candidate by specified time.
- Eligible incomplete application (for example: Declaration not signed, left thumb impression not taken, courses not mentioned, DD not enclosed, DD wrongly drawn, photographs not affixed on the application etc.) will not be processed.
- SHRIDHAR University will not take responsibility to inform these candidates. Such candidates will not be able to access the Online Test Booking System.

It will be the responsibility of the candidates to ensure that the application is duly filled and dispatched along with other enclosures complete in all respects.



# SU B.Tech ONLINE ENTRANCE TEST GUIDELINES

## Computer based Online Entrance Test

The salient features of the Computer Based Online Entrance Test are:

- Candidate sits in front of the computer and questions are presented on screen.
- Candidate submits his answers through the use of mouse. The computer is connected to a server which delivers the test in real time through a reliable connectivity.
- Online Entrance Test assumes that the candidates have basic familiarity with use of computers, mainly keyboard and mouse operations. Candidates are required to acquire these skills before appearing in the test.
- In the rare and unlikely event of a technical failure during the test, candidate may be required to attempt the test again.
- Candidates must visit [www.shridharuniversity.ac.in](http://www.shridharuniversity.ac.in) regularly to obtain latest news, information and updates on Online Entrance Test.

## Login and Password

- Upon receipt of application form and on successful payment of the required fee, candidates will be provided with a login ID and password to book a slot for online test.
- Only those candidates who are applying for B.Tech programme and appearing for the Online Entrance Test are required to log into the online test booking system available at [www.shridharuniversity.ac.in](http://www.shridharuniversity.ac.in)

The login id will be the application number and the login password will be sent to candidate's e-mail ID on successful completion of application and payment. Candidates need to book exam slot through the online test booking system available at [www.shridharuniversity.ac.in](http://www.shridharuniversity.ac.in).

## Important note:

- It will be the responsibility of the candidates to keep their passwords confidential. They will be fully responsible for all access, use and activities that occur their online booking password.
- Online booking password is required for the purpose of booking an exam slot only.

## Exam slot on the Online Test Booking System (OTBS)

- Candidates must choose a test centre, date and slot by using the Online Test Booking System (OTBS) at [www.shridharuniversity.ac.in](http://www.shridharuniversity.ac.in).
- Candidates will not be issued the e-hall ticket without booking a slot through OTBS. Candidates will have to provide the application form number and online booking password (sent to their e-mail ID) while logging into the OTBS.

Candidates are required to book their slots using the OTBS as per the schedule being given by the University from time to time. OTBS will not allow the candidate to book a slot after the booking date.

|                    |   |                                    |
|--------------------|---|------------------------------------|
| Test               | - | SU B.Tech Online Entrance Test     |
| Booking start date | - | will be declared from time to time |
| Booking end date   | - | will be declared from time to time |

- Candidates can choose slots of their choice on a first-come-first-serve basis and subject to availability.
- If a candidate is unable to book a slot in a centre of his choice, he may choose to book a slot in an alternate centre, subject to availability.
- A slot once booked can't be changed. Requests for change of test centre, date or slot will normally not be entertained.
- Also, if for any reason, including poor response of candidates for appearing at a particular centre, a test centre has to be cancelled, the candidates who had opted for that centre will be allotted another centre. The University will inform the candidates individually.

# IMPORTANT NOTE

- While booking the test schedule, the candidate must ensure that he/she has the following with him/her:
  - a) A photocopy of application form duly submitted.
  - b) Online booking password received on candidate's e-mail IDs
- In case of non availability of slots in a test centre of choice, the candidate may choose to book a slot in an alternative centre.
- It is the responsibility of the candidate to book their test schedule in online test booking system in a given time frame. SU will not be held responsible for non bookings.
- The entrance test fee will not be refunded under any circumstances for such cases.
- OTBS is available only to those eligible candidates who have submitted the application forms complete in all respects on or before the last date mentioned for the respective courses.

## E-hall ticket

- The e-hall ticket will be generated once the candidate has booked his/her slot through OTBS.
- The e-hall ticket will be issued to only those candidates who have booked slots using the OTBS before the booking end date as per the schedule being notified by the University.
- The e-hall ticket will be sent to the e-mail ID provided in the application form.

## Upload of e-hall ticket

- The e-hall ticket will also be uploaded on the website on 15th May, 2015. The e-hall ticket indicates the e-hall ticket number, address of the test centre, test date & time selected by the candidate. Discrepancies, if any, must be brought to notice of admissions office either on phone or through e-mail to [admissions@Shridharuniversity.ac.in](mailto:admissions@Shridharuniversity.ac.in). They will be required to provide the application form number and online booking password to download the e-hall ticket.
- Candidates should take two print outs of the e-hall ticket using the print option on A4 size paper only. They should ensure that all information on the e-hall ticket including photograph is clearly visible on the print out.
- Candidates should report to the selected test centre with the two copies of the e-hall ticket, one photocopy of the application form and any one of the following for photo identification: Passport/driving license/EC voter ID card/IT PAN Card or school/college photo-bearing ID card.
- No candidate will be permitted to appear for the test without a valid e-hall ticket. One part of the e-hall ticket will be retained by the invigilator and the other part given back to the candidate as proof of his appearing in the test.
- The candidates must not mutilate the e-hall ticket.
- The e-hall ticket is an important document and it is not transferable to any other person. Impersonation is a legally punishable offence.
- It must be preserved and produced at the time of counseling/admission.

## Regulations at the test centre

- Candidates should arrive at the test centre as per the reporting time mentioned in the e-hall ticket. There will be an on-site orientation prior to start of the test. If a candidate arrives after the on-site orientation has begun, he/she will not be allowed to take the test.
- The test hall will be opened 30 minutes before commencement of the test.
- If candidates do not report on time, they are likely to miss some of the general instructions to be announced in the test hall.
- Candidates coming after the commencement of the test are not permitted to sit for the test. Candidate has to register his/her name at the registration counter.

- E-hall tickets of the candidates will be checked to verify their identity.
- Each candidate will be given a seat with a computer.
- Candidates must find out and occupy their allotted seats at least 15 minutes before the commencement of the test.
- Candidates will not be allowed to carry any textual material, printed or written, bit of papers or any other material except the e-hall ticket inside the test hall.
- Candidates are also not permitted to bring calculators, slide rules, clark tables, electronic watches with facilities of calculators, laptop or palmtop computers, personal stereo systems, walkie-talkie sets, mobile phones, paging devices or any other object/device that is likely to be of unfair assistance.
- No candidate will be allowed to go outside the test hall till the completion of the test duration. Once candidates leave the hall for whatsoever reasons, they will not be permitted to continue the examination under any circumstances.
- Smoking in the test hall is strictly prohibited.
- Tea, coffee, cold drinks or snacks are also not allowed to be taken into the test hall.
- There will not have waiting facilities for family and friends at the test centre.
- Candidates should plan to meet them elsewhere after the test ends.
- Candidates shall maintain perfect silence and attend to their questions only.
- All actions of the candidates in the test hall will be closely monitored using web cameras and closed circuit TV cameras.
- Any conversation or gesticulation or disturbance in the test hall shall be deemed as misbehavior and if a candidate is found using unfair means or impersonation, their candidature will be cancelled and they will be liable to be debarred from taking examination either permanently or for a specified period as decided by the University.
- University reserved the right to withhold results of such candidates.
- Candidates must sign the attendance sheet in the presence of the invigilator. The invigilator will also put his/her signature in the place provided in the e-hall ticket.

### Online test procedure

- The candidates must ensure that the computer allotted to them is switched on and any problem with the computer should be informed to the invigilator immediately.
- Questions on the screen will be in English.
- All questions will be multiple choice types. Each MCQ will consist of a stem which may be in the form of a question or an incomplete statement with four responses labeled A,B,C and D.
- Only one of the four responses is the correct or most appropriate answer. Candidates must choose the correct or most appropriate answer by clicking on the button next to the answer.

### Rough work

- All rough work should be done in the paper supplied at the Test Centre. No paper/s should be taken to the test hall for this purpose.

### Scoring, Negative Marking

- Each question carries four marks. Each correct answer will be awarded four marks. The unanswered questions will receive no (positive/negative) mark.

\* Minimum requirement of 45% is applicable only in case of non-creamy layer OBC candidates.

# SCHOLARSHIPS PROGRAMME

With the objective of encouraging meritorious students and academic excellence, Scholarships are offered to deserving candidates as per the following criteria.

| Marks in 10+2 (CBSE & ICSE & State Board Board) | Scholarship             |
|---|-------------------------|
| 90% and above                                   | 100% of the tuition fee |
| 85% and above                                   | 50% of the tuition fee  |
| 80% and above                                   | 25% of the tuition fee  |

## Scholarship for Sports Person

- For a student represented National Team – Full tuition fee waiver
- For a student represented State Team- 50% tuition fee waiver
- Semester fee is divided into tuition fee and development charges in the 50:50 ratio.
- The Scholarship does not include refundable security deposit / Boarding and lodging cost/ cost of laptop (wherever applicable)/ transportation / any other miscellaneous fee.
- To be eligible for continuation of scholarship in the second and subsequent years the student must maintain a CGPA of 8.5 and should not have been suspended for any case of indiscipline.
- Candidates who are availing any kind of financial assistance from the government or any other private organizations for academic support are not entitled for SHRIDHAR University Scholarship.
- The University can discontinue the scholarship scheme at its own discretion.
- The final decision of awarding of scholarship will be taken by the appropriate bodies of the University.
- Girl candidates and Children of army personnel and ex-servicemen are eligible for 100% waiver of admission fee. In addition these students will also be eligible for the merit based scholarships, if applicable.

## Important Notice

### General Rules :

- All admissions are subject to fulfillment of all eligibility conditions by the candidate. If it is found at a later stage that the candidate has given false information/certificate or is found to have concealed some information his/her admission will be cancelled without any notice.
- It is the responsibility of the candidates to ensure that they fulfill all eligibility requirements for the course applied.

- The prospectus issued along with the application material provides guidelines and information about the courses and institutions.
- SHRIDHAR University reserves the right to amend or alter the information.
- SHRIDHAR University reserves the right to change the curriculum, course structure and the rules relating to admissions, examinations, fee structure, refunds, scholarships etc.
- All differences and disputes arising in the interpretation and implementation of the sections in the prospectus will be referred to the President/Vice Chancellor and his decision shall be final and binding.
- Jurisdiction for all disputes (if any) relating to the University is Jhunjhnu only.

### Rules for refund of fees:

- Full fee except registration fee will be refunded in case the student withdraws his admission before the start of classes.
- In case a student withdraws after the start of the classes and before 30th September, 2015 (last date of admissions), fee will be refunded proportionally in case the seat vacated by the candidate is filled by another admission. In case the seat is not filled the semester fees will not be refunded.
- No refund is permissible in case a student withdraws after 30th September 2015.
- Processing fee is not refundable.
- All refunds will be processed by the finance office of the University upon receiving approval from the President based on the recommendation from the Director, Admissions. Requests for withdrawals should be made in the prescribed application available at the admissions office. Refund will be made only after the candidate has surrendered the ID Card, original fee receipt and the dues clearance certificate and will be paid after 90 days from the date of receipt of due clearance certificate.
- Hostel fee will be refunded in full after proportioned deduction of fee for actual stay in the hostel. If withdrawn by 30th sep, otherwise no refunded allowed

# NOTARY AFFIDAVIT

## ANTI-RAGGING UNDERTAKING BY THE STUDENT

1. I .....  
S/o, D/o Mr./Mrs./Ms. ....  
carefully read and fully understood the law prohibiting ragging and the directions of the Supreme Court and Central/State Government in the regard.
2. I have received a copy of the UGC regulations on curbing the Menace of Ragging in Higher Educational institutions, 2009 and have carefully gone through it.
3. I hereby undertake that:-
  - I will not indulge in any behavior or act that may come under the definition of ragging,
  - I will not participate in or abet or propagate ragging in any form,
  - I will not hurt anyone physically or psychologically or cause any other harm,
4. I hereby agree that if found guilty of any aspect of ragging, I may be punished as per the provisions of the UGC Regulations mentioned above and/ or as per the law in force.
5. I hereby affirm that I have not been expelled or debarred from admission by any institutions.

Signed this.....day of .....month of .....year.....

Name

Signature

Name: .....

Address: .....

.....

.....

1. I .....  
 F/o.M/o. G/o .....  
 have carefully read and fully understood the law prohibiting ragging and the directions of the Supreme Court and the Central/ State Government in this regard as well as the UGC Regulations on Curbing the Menace of Ragging in Higher Educational institutions 2009
  2. I assure you that my son/daughter/ward will not indulge in any act of Ragging.
  3. I hereby agree that if he/she is found guilty of any aspect of ragging he/she may be punished as per the provisions of the UGC Regulations mentioned above and/or as per the law in force.
- Signed this.....day of .....month of .....year.....

Signature

Name

Name: .....

Address:.....

.....

.....



## Shridhar University

Pilani - Chirawa Road, Pilani, Rajasthan – 333031  
Contact No: 01596 – 510000, 08875002523/ 24 .Fax no. 01596 – 510002  
E-mail: [admissions@shridharuniversity.ac.in](mailto:admissions@shridharuniversity.ac.in) or Visit: [www.shridharuniversity.ac.in](http://www.shridharuniversity.ac.in)