

OUR ROOTS



Shri R. P. Mody
Hon'ble Chancellor

Mody University of Science & Technology (commonly known as Mody University) was established in the year 1998 by Shri Rajendra Prasad Mody, an industrialist and philanthropist from the University town of Lakshmangarh in Rajasthan. It is Shri R. P. Mody's vision that has made the institute one of the foremost educational hubs for women in the country, with more than 10,000 women graduating from its various colleges since its inception. The University is built with the objective of nurturing excellence in every girl through an experienced faculty, world-class infrastructure at the campus which is set in a beautiful and secure environment.

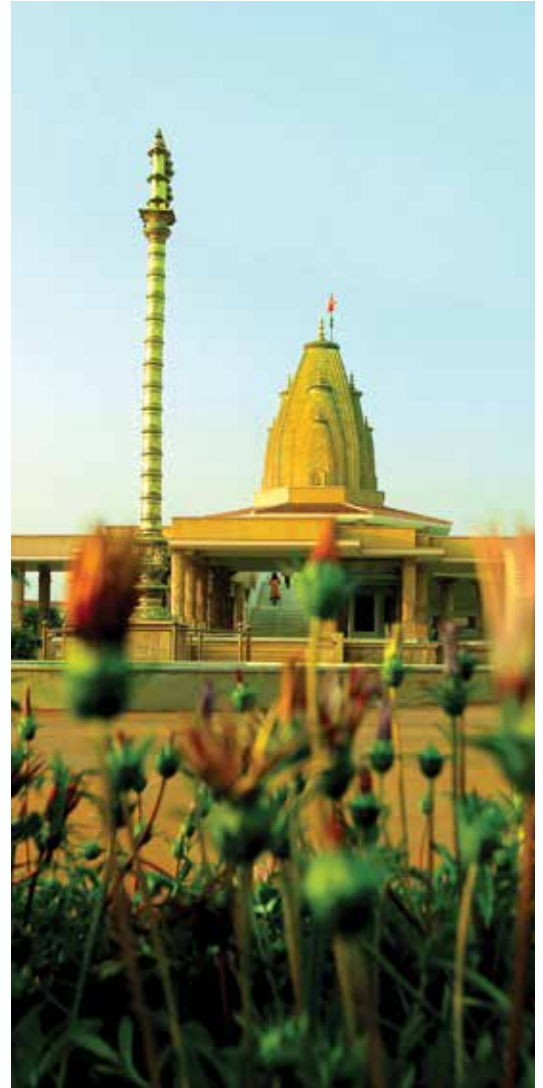
BOARD OF MANAGEMENT

MEMBERS

- Sh. R.A. Mody
- Sh. S.S. Bhuwania
- Dr. R.K. Sureka
- Dr. Chandra Sekhar
- Dr. Raja Reddy
- Dr. Suresh Advani - President
- Commissioner - Directorate of College Education, Govt. of Rajasthan

MEMBER SECRETARY

- Registrar



VISION

To be a world-class institute of learning for women with Indian values, dedicated to nurturing excellence through the best available facilities in maximum possible fields.

MISSION

Committed to nurturing excellence in women through imparting knowledge and enabling them to become professionals, well-versed in modern technology and management practices while imbibing social sensitivity and environmental consciousness for the betterment of self and society.

PRESIDENT'S MESSAGE



Dr. Suresh Advani

Having served at one of the Top Ten Management Institutions in India, I can tell you that Mody University students are comparable to the best students that I have found anywhere in terms of their behavior and interactions with their faculty members. We have a great faculty and wonderful Deans who work tirelessly to prepare the students for future successes.

The University has always been at the helm of educating, nurturing and positively shaping

the young minds of students who join every year. Innovation and advancement is the core of our University and we are proud of its many achievements. Each year, research papers, articles and numerous books covering a vast array of topics are published by our eminent faculty members. Students not only excel in academics, but also in sports and other co-curricular activities. Our students have won laurels at various national and international competitions



and our brimming mantle bears witness to their multi-faceted excellence.

The underlying precept of Mody University is "Learning is the beginning of spirituality." It is our unflinching belief that enriching the minds and nourishing the souls of students is an integral part of education to ensure their academic, intellectual and spiritual evolution. Our sprawling green campus and its serene setting, state of the art infrastructure, high-tech laboratories aid in honing their skills and

providing them with an environment where they can learn, grow and thrive. Spirituality is in the ambience of Mody University.

We aim at being the university where students come not only to study and get exceptional placements, but also where their imaginations fly high and their aspirations find a home. We are here because we believe that women will lead us into a future filled with promises.

A 265 ACRE WIFI ENABLED CAMPUS







ACADEMIC BLOCK



HALLMARKS



BEST EDUCATION BRANDS - 2017

The Economic Times

BEST PRIVATE WOMEN UNIVERSITY IN ASIA 2016

ASSOCHAM and The Education Post

INDIA'S BEST B-SCHOOLS 2016 - 48th RANK

Careers 360

BEST WOMEN UNIVERSITY OF THE YEAR 2016

2nd National Education Summit and Awards 2017

INSTITUTIONAL EXCELLENCE AWARD 2016

Society of Indian Law Firms and Menon Institute of Legal Advocacy Training

INDIA'S BEST B-SCHOOL 2016

Outlook Best B-Schools 2016

UNIVERSITY OF THE YEAR 2016 - PROGRAM EFFICACY

Higher Education Review

MODY SCHOOL - 1st IN RAJASTHAN, 4th IN INDIA

Among Top All Girls' Boarding Schools



28

YEARS IN EDUCATION

18 LACS

HIGHEST PACKAGE

1:12

TEACHER STUDENT RATIO

265

ACRES CAMPUS WITH

21,000 TREES

6

COLLEGES & MODY SCHOOL





12

LIFE ON CAMPUS

NURTURING EXCELLENCE IN WOMEN
LUSH GREEN CAMPUS
TAPOVAN
DINING HALL
CAFETERIA
HOSTEL LIVING
SPORTS FACILITIES
AUDITORIUM

40

COLLEGE OF ARCHITECTURE AND DESIGN

46

COLLEGE OF ARTS, SCIENCE AND HUMANITIES

54

COLLEGE OF BUSINESS MANAGEMENT, ECONOMICS AND COMMERCE

62

COLLEGE OF ENGINEERING AND TECHNOLOGY

72

COLLEGE OF FASHION DESIGN AND MERCHANDISING

80

COLLEGE OF LAW AND GOVERNANCE

88

CAREER DEVELOPMENT CENTRE

PLACEMENT RECORDS
INDUSTRY INTERFACE
ALUMNI ASSOCIATION
TOP RECRUITERS

96

GLOBAL CONNECTIONS

INTERNATIONAL COLLABORATIONS AND MoUs
INTERNATIONAL INTERNSHIPS

104

EMINENT FACULTY

108

FEE STRUCTURE

SCHOLARSHIP & TUITION FEE WAIVER

114

MODY SCHOOL

122

HOW TO REACH LAKSHMANGARH

123

IN AND AROUND LAKSHMANGARH

124

MODY CAMPUS

LIFE ON CAMPUS

THE QUALITY OF A PERSON'S
LIFE IS IN DIRECT PROPORTION
TO THEIR COMMITMENT TO
EXCELLENCE, REGARDLESS
OF THEIR CHOSEN FIELD OF
ENDEAVOR.

-VINCE LOMBARDI

It takes a lot to become one of the leading women's universities in India. Mody University has reached those heights because of its commitment to providing world-class facilities to women of this nation and beyond.

Mody University believes in nurturing excellence in women from every walk of life. The university's strong culture of tradition with healthy doses of modernity leaves a lasting impression on every young woman passing out of here. The setting matters too, and Mody University's 265 acre green campus in the scenic town of Lakshmangarh, Rajasthan, gives it a serene and secure environment.





NURTURING EXCELLENCE IN WOMEN

The University, through its many undergraduate and postgraduate programmes offered by its 6 colleges, presents women with diverse options to pursue. A well-qualified and dedicated faculty guides and mentors the girls to excel over a broad spectrum of academic and cultural disciplines.

What binds the university together is its rich culture that helps in shaping the personality of each Mody University girl. The institute encourages a progressive attitude towards learning, while

keeping Indian values in the foreground. This blend of modernity and tradition has been embodied owing to the world-class infrastructure and the serene *Tapovan* temple, which is also the spiritual centre for the entire campus.

Mody University has emerged as an institution of eminence and repute, with its alumnae spread across India and the world. The University is proud of producing women of character who will be responsible citizens and leaders of the nation.

MODY UNIVERSITY 2018-19



AN OASIS IN THE DESERT

LUSH GREEN CAMPUS WITH EASY ACCESSIBILITY



Two hours from Jaipur on the newly widened Jaipur - Bikaner highway, Mody University's beautiful campus lies in the historic Shekhawati region. The lush green campus is full of magnificent architecture, tree-lined avenues, flowers, fountains, water-bodies, statues and *shilalekhs*.

Though 28 years ago, the area where the Mody University campus now stands was just a patch

of desert, but through careful and determined efforts, the barren land has now been transformed into a 265 acre oasis sprawling with vast green lawns, designer fountains, rolling flower beds and roomy avenues shaded by trees. To add to the charm, there are also numerous water bodies and a neighboring marshland that's home to numerous exotic birds and aquatic animals.



A NATURE LOVER'S PARADISE

RICH FLORA AND FAUNA

At the moment, the campus is a permanent home for over 100 species of birds and 14 species of butterflies. Ornithologists and Lepidopterologists from World Wildlife Fund (WWF) and other notable nature conservation organizations have repeatedly flocked to Mody University to witness the incredible variety of fauna present there.

All these little details add up to make Mody University one of the few WWF certified University campuses in the country. The campus also boasts of 26,000 trees and shrubs of some 300 different species that includes several that are unique to this location only. Moreover, the flora is enriched from time to time with new species being planted. Mody University's green ambience also extends to reforesting large parts of the university town of Lakshmangarh. Not only has Mody added to the beauty of the surroundings, but has also helped in reducing soil erosion while replenishing table water content.

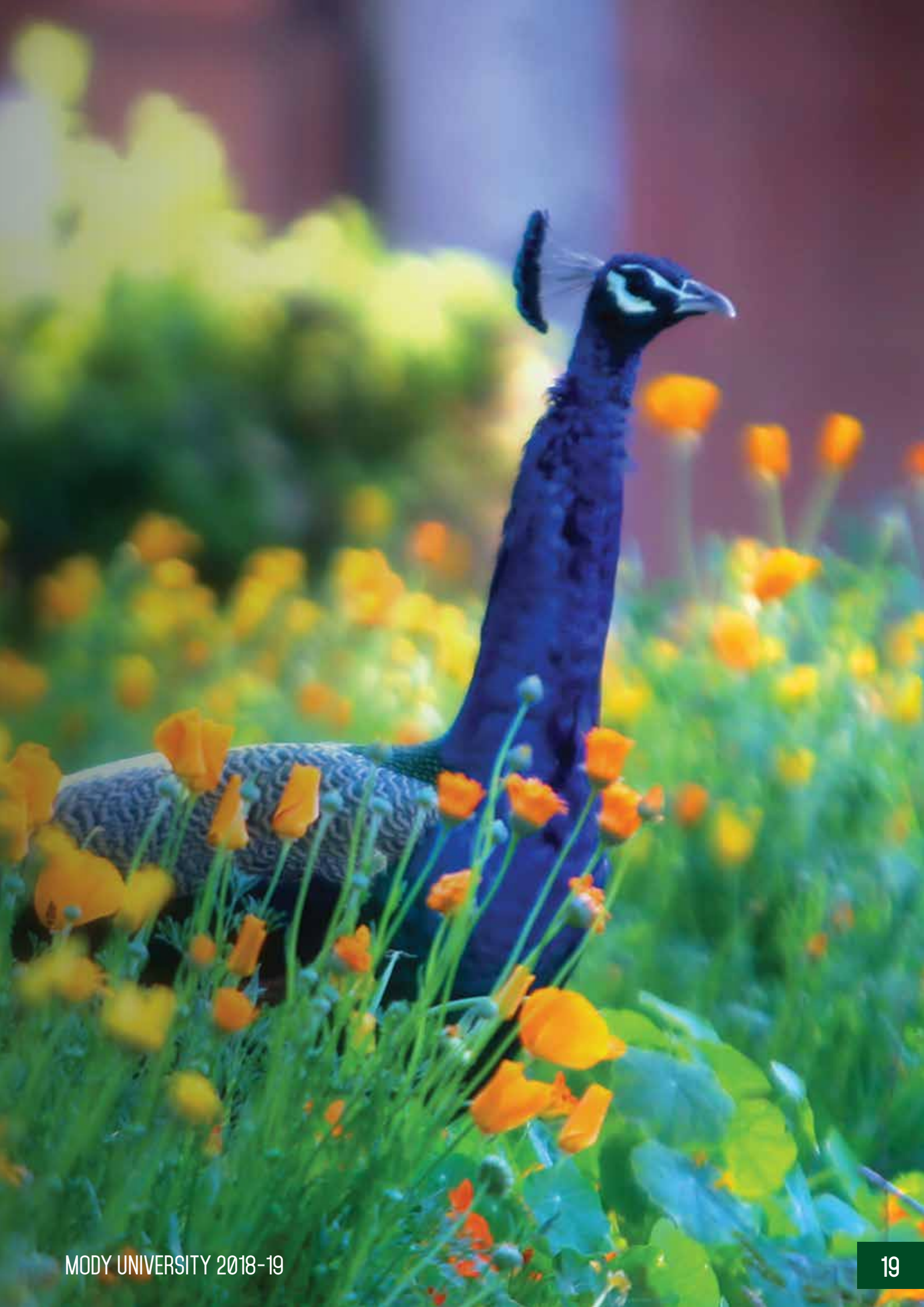
What's more? Mody University's stable boasts of 55 horses and is part of the University's heritage as well as a step to provide equestrian training to students. Apart from this, the dairy which holds 250 cows yields over 1,000 litres of milk which is used by the university itself.

The students and faculty residing at Mody University experience an idyllic life right amidst the best that nature can give and this helps in focusing better at academic pursuits.

A SUSTAINABLE GREEN CAMPUS

In various areas, the University has taken strong steps to build a self-sustaining environment:

- (a) Rain water harvesting to help recharge the underground aquifers.
- (b) A sewage treatment plant capable of recycling 11 lakh litres of used water daily, and channeling it for horticulture.
- (c) Drip irrigation and sprinkler irrigation systems that further reduce water consumption.
- (d) Solar water heating systems to conserve electricity, and solar photovoltaic systems as an alternate source of energy.
- (e) Organic farming through vermin compost and conventional compost produced in-house to replace chemical fertilizers.
- (f) Solar powered vehicles within campus.



A PLACE OF SPIRITUALITY

MAJESTIC TEMPLE AND MEDITATION HALL

A focus on the inner voice allows students to pursue with confidence whatever path they choose. Without training the mind and discovering this inner voice, all our education and knowledge remains incomplete. Mody University thrives on a culture that is deeply ingrained with Indian values of spirituality. While academics help develop the mind, meditation strengthens it further and enhances creativity and inspiration which is why our campus has been designed to allow students and faculty members to showcase the best in them, and to promote excellence in everything they wish to pursue. To bolster this belief, Mody University's soul lies

in the *Tapovan*, a place dedicated to prayer and meditation. *Tapovan* is an architectural marvel where spirituality comes alive. *Ramadarabara*, the central temple with a serene Meditation Hall, is designed in the shape of a lotus with extensions that go to form a *Yajna-Shala*. Spread over eight acres, it is truly a haven for spirituality.

In addition to that, *Shilalekhs* across the campus bring to light spiritual quotations from the *Vedas* and other scriptures and make up for moments of great reflection. The life-size statues and busts of great saints in different parts of the campus bring a sense of omnipresent divinity to the entire atmosphere.



ACTIVITIES AT TAPOVAN

- Temple Timings: Morning 05:00 AM - 11:00 AM and Evening 05:00 PM - 08:30 PM
- Morning 06:00 AM - 07:00 AM, seven different kinds of *Vedic yajnas* performed by the priests at *Yajna-Shala*
- Major celebrations for key festivals that's attended by on-campus residents and parents alike
 - Regular Yoga and Meditation classes for students and faculty members
 - Spiritual discourses by renowned gurus
- Weekends: Screening of award-winning documentaries on spirituality, nature and social awareness issues





TAPOVAN-THE HERMITAGE



HEALTH, NUTRITION AND FUN

GRAND DINING HALL & MULTI-CUISINE CAFETERIAS

GRAND DINING HALL

With a capacity to accommodate more than 1800 people at a time, the Grand Dining Hall at Mody University is a wonder in itself. Lavishly decorated using marble and stone, the entire length of the ceiling has been designed like an arched skylight. This magnificent structure, embedded among gardens and the fountains, makes every meal a wonderful experience.

The Grand Dining Hall brings everybody together in an otherwise diverse campus and you can expect to find a range of healthy, nutritious and tasty vegetarian cuisines for your delectable taste buds. The dairy products served here come from the university's very own dairy and the area also has its own bakery that bakes pure vegetarian cookies, breads and tasty snacks.

CAFETERIA

If a restaurant is what students want, they can stop by the very popular Cafeteria on Fifth Street adjoining the dining hall building that offers a variety of Indian and Continental dishes. The Cafeteria is a lively and upbeat place for students to relax and spend some time away from their busy schedules. Cafeteria on Fifth Street is a very popular hangout place within the campus.

Also, a third option for residents and visitors has been recently opened. Students and faculty members can enjoy a world-cuisine cafeteria that serves four kinds of global cuisines, such as - Italian, Mexican, Chinese and Indian.

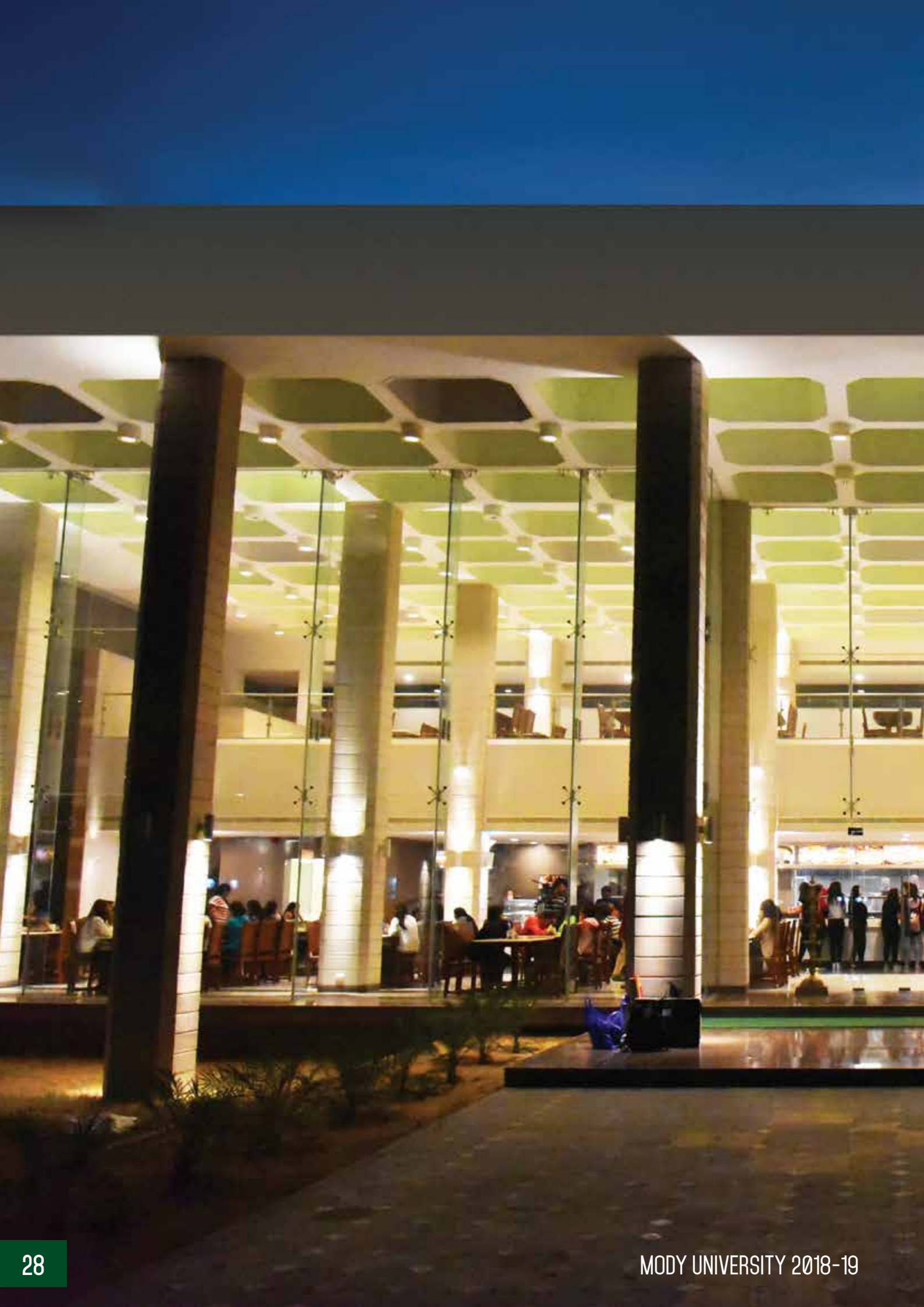






GRAND DINING HALL





MULTI CUISINE CAFETERIA

ON THE FIRST AVENUE



SHUTTLE SERVICES

- 2 AC buses ferry students on our 14-Km long internal road network starting from 07:00 AM to 10:00 PM at a frequency of 20 minutes
- Frequency of shuttles increases during breakfast, lunch & dinner time to facilitate students
- Weekly bus service to Sikar and Jaipur
- Scheduled bus services to other surrounding areas



LIVING SPACE

PLUSH RESIDENTIAL PREMISES AND EQUIPPED WELLNESS FACILITIES

We understand and value the concerns of parents who send their daughters away from home and her comfort and security is of primary importance to us. That is why, extreme care has been taken to make life at Mody University as warm and secure as possible.

HOSTELS

The residential facilities at Mody University are superb and the designs for the recreational and living spaces show great attention to detail. Our state-of-the-art hostels, located in the heart of the campus, are designed to ensure comfort and safety of all the 3000 girls residing there.

The campus has 28 hostels, all of which are air conditioned except for 3 hostels. Each hostel houses 180 students and each student can choose between single, double or four-bed facilities with an option of AC or non-AC rooms. Each room comes with ample storage capacity and are well-furnished and well-ventilated. The bathrooms too, are a joy to use and come equipped with cold and hot water facilities depending on the weather.

To ensure that only the safest and purest water is supplied to our students, all hostel floors have been equipped with water coolers with the latest RO technology and students can also enjoy 24×7 Wi-Fi connectivity. Apart from this, the university has its own power-house which ensures uninterrupted electricity supply in the campus.

HEALTH AND WELLNESS

We also have a team of highly qualified Residential Lady Doctors and female nursing staff standing-by for emergencies as well as regular check-ups at the university clinic and there are two ambulances that are always ready to take students to the clinic in case of any emergency. Apart from this, the university also arranges visits from Dentists, Ophthalmologists and ENT (Ear, Nose & Throat) Specialists from time to time.



STRETCH & COMPETE

Mody University believes in all-round development -academic, physical and spiritual. The brilliant facilities provided by the University for its students are a testament to the unrelenting focus on both academic and sporting excellence.

ACTIVITIES

- Sports: Hockey, Football, Volleyball, Basketball, Badminton, Lawn Tennis, Horse-riding and Athletics
- Coaches: Supervised by, highly experienced coaches and trainers
- Sporting Events

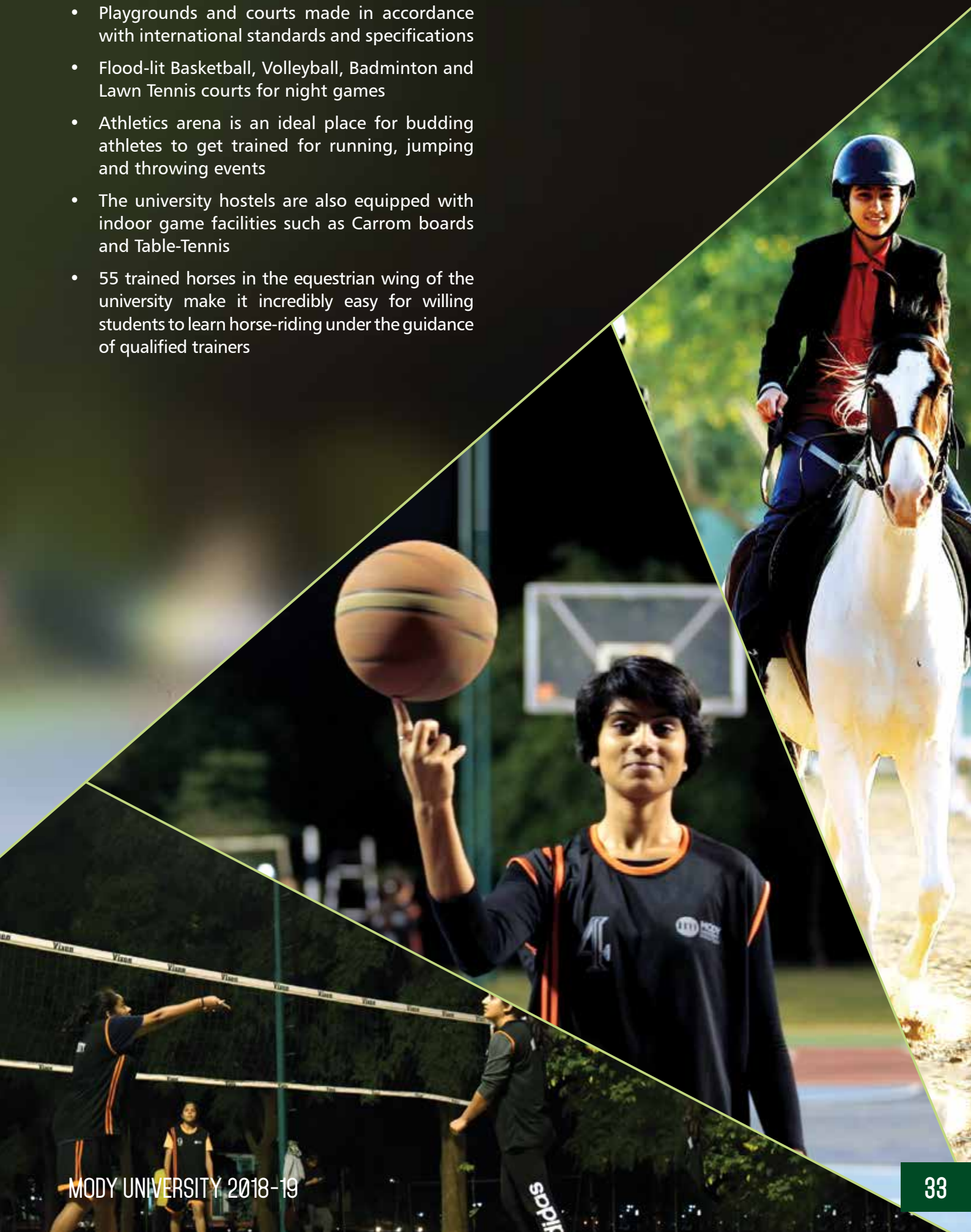
TOURNAMENTS

- Inter-college/ University sports tournaments, yielding in medals and laurels for the University
- Won gold medal in Basketball & Volleyball at "Varchas" sports event at IIT-Jodhpur
- Won Gold medal in 4X100 meter relay, BITS Open Sports Meet 2016 (BOSM 2016) at Pilani



FACILITIES

- Playgrounds covering a total area of 17.5 acres
- Playgrounds and courts made in accordance with international standards and specifications
- Flood-lit Basketball, Volleyball, Badminton and Lawn Tennis courts for night games
- Athletics arena is an ideal place for budding athletes to get trained for running, jumping and throwing events
- The university hostels are also equipped with indoor game facilities such as Carrom boards and Table-Tennis
- 55 trained horses in the equestrian wing of the university make it incredibly easy for willing students to learn horse-riding under the guidance of qualified trainers



55 HORSES STRONG EQUESTRIAN WING







OWN THE SPOTLIGHT

STATE-OF-THE-ART AUDITORIUMS

A first-time visitor to the campus is often delighted by the lush greenery and is awe-struck by the magnificent auditorium which has been designed in the lines of a modern day coliseum and you can get a perfect view of the main stage regardless of your seating location.

Named after the spiritual poet and classical musician from India - Swami Haridas, the entrance area is tastefully decorated with water-bodies, fountains and greenery. Moreover, the double-height interior walls are embellished with spiritual sculptures, murals and paintings.

MODY UNIVERSITY 2018-19



OUR AUDITORIUMS

SWAMI HARIDAS SABHAGAR

- Capacity-1040 seats
- Equipped with a state-of-the-art audiovisual system from Bose and cutting edge projection system from Christie (22,000 Lumen)

TANSEN (RAMTANU PANDEYA) SABHAGAR

- Capacity-303 seats
- Named after Tansen-the world famous singer and one of Akbar's Navratnas
- Students attend international seminars, lectures, workshops, symposiums and other academic and cultural programmes here



SPECTACULAR AUDITORIUM



COLLEGE OF ARCHITECTURE AND DESIGN

WE ARE WHAT WE
REPEATEDLY DO.
EXCELLENCE,
THEN, IS NOT AN
ACT, BUT A HABIT.
-ARISTOTLE

College of Architecture and Design (CAD) is committed to expanding education beyond mere academics. With our unique teaching pedagogy, we aim at integrating academics, interests, innovation, research and professional training into a single unit to bring holistic education to the students. At CAD, students are exposed to the latest technologies in the world of designing and architecture and we focus on bringing creativity out of the students while letting them churn it into reality.

The college campus is full of sophisticated and advanced infrastructure and is a perfect symbol of Indian Culture, with Indo-Saracenic and contemporary styled buildings dotting the map and we want the campus to serve as a learning and living laboratory for the students throughout the duration of the course. The students also get an opportunity to involve themselves with the real experience and the various disciplines of architecture and design by getting their hands on traditional, new and technical ways of designing.

We want all students of CAD to turn into responsible architects who can lend society a new vision through their work. Our unique learning platform helps budding architects to turn these dreams into reality and with a vision of educating humanity through bringing innovation and creativity together, the faculty of CAD is completely dedicated to creating professionals and passionate artists, rather than just graduates.

Creativity comes from within, so we encourage the students harness the same. We provide them with resources in the form of experienced teachers and equipment and the environment required to learn in the form of hi-tech labs. So, if you want to be a part of a collaboration rather than just an institution, CAD is the perfect place for you.

OUTDOOR SKETCHING



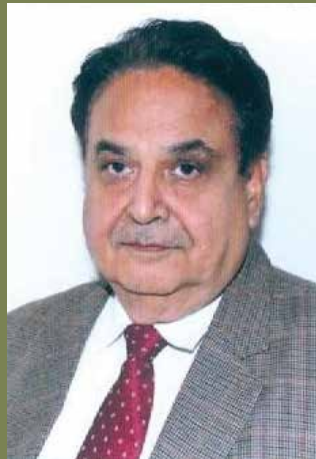
STUDY TRIP TOUR TO PARASRAM PURA



CONTEXTUAL STUDIO SITE VISIT TO UDAIPUR



DESIGN CHAIR'S PROFILE



Mr. Ajit Mangar is the Founding Dean of the College of Architecture and Design (CAD). He moved to Mody University from Arvindbhai Patel Institute of Environmental Design (APIED), Vallabh Vidyanagar, Gujarat, where he was serving as the Director (Academic) since January 2012.

At APIED, he was responsible for the D.C. Patel School of Architecture, H.M. Patel School of Interior Design, and Bhikaka Centre for Human Settlements. Mr. Mangar carries with him an extensive academic experience from the School of Architecture and Building, University of Technology, Papua New Guinea (PNG) where he served as a Lecturer, Senior Lecturer and Acting Head of Department and he has worked as an architect in many different capacities in Australia and Papua New Guinea.

Some of the key positions he has held

include Senior Consultant for Frame Work Architects, PNG and Project Development Consultant for Brisbane and Partner, Habtech Architects, Brisbane. In addition, he has worked as an Architect with Urban Systems Corporation, Sydney, National Housing Commission, PNG, B.V. Doshi & Joseph Allen Stien Architects, Ahmedabad and Vastu Shilpa, (B.V.Doshi, Architect), Ahmedabad. Moreover, Mr. Mangar has built a strong relationship with heritage properties in 'Shekhawati' region where he has sent a large group of Architecture and Interior Design students for documentation of important buildings. He expects to build upon these relationships to develop a unique architecture programme at Mody University that's consistent with the vision of using the campus as a Living and Learning Laboratory.

COLLEGE ACHIEVEMENTS

Under the guidance of our Founding Dean, Mr. Ajit Mangar, the combined efforts of the faculty as well as the students have brought immense pride for the college. The students have been active participators in national and college level academic events and even the faculty has earned a remarkable reputation in the field of academics as each and every member of CAD is a professional with passion and vision.

Other than academics, the college gives equal importance to the other aspects of life. The efforts put in by faculty members as well as the students have resulted in an overall development in our students. From winning cultural competitions to winning medals in National sports meets, our students have proved their mettle to the nation.

"EDUCATION IS A BLEND OF ACADEMICS, CREATIVITY AND INNOVATION"

PROGRAMMES AT A GLANCE

PROGRAMMES	INTAKE	ELIGIBILITY
5 YEAR UNDER GRADUATE PROGRAMME		
BACHELOR OF ARCHITECTURE (B. ARCH.)	40	National Aptitude test in Architecture (NATA) with at least 40% Score and 10+2 scheme of examination with 50% marks in Physics, Chemistry and Mathematics and also 50% marks in aggregate of the 10+2 level examination OR 10+3 Diploma (with Mathematics as one subject) duly recognized by central/ state Government as equivalent to 10+2 level with minimum 50% aggregate marks. Note : Merit list will be prepared considering 50% weightage of each, NATA score and marks in Qualifying examination.
4 YEAR UNDER GRADUATE PROGRAMME		
BACHELOR OF INTERIOR DESIGN (B.I.D.)	40	A Minimum of 50% marks in any stream in HSCE.
POST GRADUATE PROGRAMME		
MASTER OF PLANNING (M.PLAN.) – TWO YEAR POST GRADUATE PROGRAMME	20	Bachelor's degree in Planning, or Civil Engineering, or Architecture (from any University/ Institution recognized by the Government of India); OR Master's degree in Economics, or Sociology, or Geography, (from any University/ Institution recognized by the Government of India). No candidate with less than 55% marks in aggregate at the preceding University examination shall be admitted to the planning course.

PROGRAMMES OFFERED

BACHELOR OF ARCHITECTURE (B. ARCH.)

A holistic 5-year degree programme that teaches students about the sociological, cultural and ecological aspects of architecture and designing. The curriculum focuses on sharpening the strategic insights of the students over the duration of the course and makes them ready to serve the industry's demands with regular Internships for the students at marquee names in the field of architecture and design.

The first year of the course will be the foundation year while the second and third years focus on understanding the in-depth relationships between various aspects of architectural techniques. The final 2 years will be completely based upon training the individual to be a better professional with maturity and ingenuity.

BACHELOR OF INTERIOR DESIGN (B.I.D.)

Bachelor of Interior Design (B.I.D) is a degree programme that spans 4 years. In this course, students are put through a rigorous and creative curriculum to familiarize them with the foundations of interior designing.

It is an art that requires a perfect blend of creativity and imagination on the students' part. The aim of this curriculum is to turn creativity into professional outputs, thereby turning student into an expressive

artist in the process. Moreover, the curriculum has been designed specifically so that individual focus can be given to students and can be trained as per the current urban architectural requirements.

MASTER OF PLANNING (M.PLAN.) – TWO YEAR POST GRADUATE PROGRAMME

A 2 year Post-Graduation programme that focuses on the planning and management domain as a profession. The course has been designed to prepare students for the challenges of urban planning under changing environments in their upcoming professional career. Students pursuing this course have an opportunity to work for government offices or on private basis for architectural planning.



CAD STUDENTS WITH EMINENT ARCHITECT,
PADMA SHRI B.V. DOSHI AT HIS OFFICE - SANGATH

RESOURCES

CAD LIBRARY



HIGH TECH I-MAC LAB



MATERIAL& RESOURCE MUSEUM



DESIGN STUDIO DISCUSSION



LIBRARY

The CAD library is stacked with a wide range of popular architectural journals and books written and compiled by some of the finest minds in the industry. Whether its Interior design or Architecture, the students can depend on the library for reliable sources of information. To support learning and teaching side-by-side, the whole facility is connected with computer systems, giving complete access to well-known online resources and journals. Students can also access online lectures from different sources.

COMPUTER LAB

The CAD computer lab is also equipped with hi-tech i-Mac systems to help students understand Computer-aided Design Methodology better. This is to make them industry ready. Moreover, we not only want our students to learn the usages

of state-of- the-art technologies but also to be efficient enough when it comes to utilizing those skills.

MATERIAL LAB

The Material Lab houses construction materials, interior finishing equipment and objects that are widely used in the industry. The lab has displayed these materials along with their specifications, properties, operating manuals, methodology to be used and other related specifications so that student can access such materials and use them in their projects. Moreover, the campus is dotted with facilities such as art rooms and workshops and the students can take their creativity to a new level and experiment with the ideas and thoughts they have right here. The material lab and stores help the students with all the raw material they may need for their creative vision.

LIFE BEYOND CLASSROOM

We believe knowledge should never be restricted to a classroom and at CAD, we focus on the overall development of students as we want to educate them for life rather than just producing graduates. For us, extra-curricular activities are as important as any other academic activity and even the students take the concept of over-all development seriously with their active participation in every event that appeals to their taste.

Whether it's a cultural festival like Janamashtmi or a College Festival, each day is celebrated with equal passion and enthusiasm. It is delightful to see students from different cultural backgrounds coming together and making every fest a great success their skills and turn the events into memorable moments for everyone.

Moreover, regular visits to various factories and workshops help the students keep in touch with the working of this industry and educational trips to other universities are also conducted so that the students can interact with students from other areas and get more knowhow on domains and possibilities that are present in this market.

When it comes to academics and professionalism, the students from CAD are unmatched. From bagging internships with reputed brands to achieving noteworthy feats in their career, the students have proved their acumen in this field. We also believe in creating artists that not only make architectural drawings but someone who can add life to those drawings, someone who can blend creativity and technology to create masterpieces after another.

HERITAGE HAVELI VISIT TO NAWALGARH



COLLEGE OF ARTS, SCIENCE AND HUMANITIES

IN THIS WORLD THERE IS
NO FORCE EQUAL TO THE
STRENGTH OF A WOMEN
DETERMINED TO RISE.

-W.E.B. Du BOIS

The College of Arts, Science & Humanities (CASH) is the oldest among the six colleges under Mody University of Science and Technology. It has 7 departments that span interdisciplinary education, 360 students, 3000 Alumni and over 60 committed faculty and staff members. The college offers over 20 undergraduate and 10 post graduate programmes besides advanced research in the diverse areas of plant biotechnology, synthetic organic chemistry, condensed matter physics, dielectric, photonics & fiber laser, graph theory, optimization techniques and other vast areas of arts and humanities. The faculty members at CASH are experts in their fields –as researchers as well as teachers who train students to explore the deepest questions that have the potential to shape their lives along with our world. Since the inception of the college, it has been regularly introducing new courses that transcend traditional disciplines while catering to the needs of a globalized India.

The college fosters educational excellence and interdisciplinary inquest through its unique blend of courses in disciplines such as Humanities, Arts, Natural Science and Social Science. Our diversity and dynamism serves as a catalyst for continued growth and development in various upcoming fields of study like Forensic Science, Food & Nutrition, etc. One of the most valued features of CASH is its Foreign Language Department that offers certificates and diploma courses for foreign languages such as French, Spanish, German, Japanese and Chinese thereby enabling students to compete globally. Moreover, the Department of English provides advanced courses that help students obtain good spoken and written English skills.

CASH's potential as an institution of unique higher learning extends beyond that of a traditional education by virtue of its larger size and the availability of a wide array of subjects to choose from. The aim of the college is to cultivate skilled and talented individuals who can effectively communicate with the international community and also come up with flexible ideas that can go beyond the boundaries of academics.



DEAN'S PROFILE



Dr. Atul Kumar completed his M. Sc. in Engineering Physics in the year 1991 from University of Roorkee (now known as IIT, Roorkee) and earned a Ph. D. on the topic of "Theory of Optical Solitons and Applications in Optical Communications" from the Department of Physics(IIT Delhi)in 1998. Soon after, Dr. Kumar was invited to work as a Postdoctoral Research fellow for 18 months in Electrical Engineering Department at Korea Advanced Institute of Science & Technology (KAIST), South Korea. There, he worked on various aspects of DWDM based long haul optical communication systems and networks.

From January 2000 to March 2003, Dr. Atul Kumar worked as Group Leader for the R&D division of Renka Inc. and was responsible for the design, development and manufacturing of optical fiber based components.

In April 2003 he won the Japanese Government Research Fellowship (Monbugaku-sho) and he worked for 2 years in at Research Center for Advanced Science & Technology (RCAST), University of Tokyo, Kobama Campus, Japan. While in Japan, he was involved in the design and construction of fiber-based Laser Systems,

Optical Pulse Shaping and Super Continuum Light Generation.

In the year 2007, Dr. Atul Kumar joined Ansal University, Gurgaon (erstwhile Ansal Institute of Technology) and since then, besides teaching, he has served the institution in various academic and administrative positions such as Resident Warden, Faculty I/ C (Library), Dean (SAS and SCA), Professor I/ C (Ph. D. Programme), Dean (Admissions) and Dean – Students Welfare.

From June – August 2009, Dr. Kumar visited North Carolina State University, USA , to work on Thin Film Nanostructure at CAMSS lab in the MSE Department. Post Ph. D., Dr. Kumar has gained more than 18+ years of Post-Doctoral Research, Industrial Research & Development and teaching experience. Throughout the years, he has also published more than 20 research papers in International as well as national Journals and conferences. His current research interest includes Non-Linear Fiber Optics, Fiber Laser and Nano-Photonics.

Dr. Kumar is presently guiding 4 Ph. D. students. He is a member of OSA, ISTE and the Optical Society of India.

COLLEGE ACHIEVEMENTS

- Faculty with Ph. D. and Post- Doctoral research experience
- National and International Fellowships & Awards
- Research grant of more than 3.5 crore by DST, DBT, UGC, CSIR, DST Rajasthan, etc.
- 25 books published by acclaimed publishing houses in past 10 years
- More than 200 peer reviewed research papers in reputed national and international journals in last 5 years
- More than 30 doctoral degrees awarded in last 5 years
- MoU with Government Laboratories and research facility for student internship and dissertation
- Special coaching sessions for preparation of national entrance exam such as JAM, NET, GATE

PROGRAMMES AT A GLANCE

PROGRAMMES	INTAKE	ELIGIBILITY
UNDER GRADUATE PROGRAMMES		
B.A. with choice of any three subjects out of the following: English Literature, Psychology, Political Science, Sociology, Sanskrit, Geography, History, Journalism & Mass Communication, French	30	A pass in 10+2 examination of CBSE, or its equivalent from any recognized Board, in any stream with adequate proficiency in English.
B.A. (H) in English	20	
B.A. (H) in Psychology	20	
B.A. (H) in Sanskrit	10	
B.A. (H) in French	10	
B.A. (H) in Political Science	15	
B.A. (H) in Vedic Astrology	05	
B.Sc. (Information Technology)	10	
B. Sc. (Computer Science)	10	
B. Sc. (Multimedia and Animation)	10	
Bachelor of Journalism & Mass Communication (BJMC)	20	
B. Sc. (Chemistry, Botany, Zoology)	30	A pass in 10+2 examination of CBSE, or its equivalent from any recognized Board, in Science stream with Biology and adequate proficiency in English.
B. Sc. (H) Biotechnology	20	
B. Sc. (H) Food & Nutrition	15	
B. Sc. (H) Psychology	15	
B.Sc. (Physics, Chemistry, Mathematics)	30	A pass in 10+2 examination of CBSE, or its equivalent from any recognized Board, in Science stream with Mathematics and adequate proficiency in English.
B. Sc. (H) Physics	15	
B. Sc. (H) Mathematics	15	
B. Sc. (H) Chemistry	15	A pass in 10+2 examination of CBSE, or its equivalent from any recognized Board, in Science stream and adequate proficiency in English.
B. Sc. (Optometry)	10	
B. Sc. (H) Forensic Science	30	
POST GRADUATE PROGRAMMES		
M.A. (English)	10	Bachelor Degree, from any recognized University, with minimum 50% of marks and adequate proficiency in English.
M.A. (Psychology)	10	
M. Sc. (Information Technology)	10	
M. Sc. (Chemistry)	20	Bachelor Degree, from any recognized University, with Chemistry as a subject for three years/ six semesters OR B. Sc. Applied Chemistry/ B. Sc. Biochemistry/ B. Sc. Industrial Chemistry with minimum 50% marks and adequate proficiency in English.
M. Sc. (Physics)	20	Bachelor Degree, from any recognized University, with Physics as a subject for three years/ six semesters OR B. Sc. Applied Physics/ B. Sc. Electronics with minimum 50%marks and adequate proficiency in English.
M. Sc. (Microbiology)	15	Bachelor Degree, from any recognized University, with Botany/ Zoology/ Microbiology/ Biotechnology/ Biochemistry/ Forensic Science as a subject for three years/ six semesters OR an equivalent degree in related field with a minimum of 50% marks and adequate proficiency in English.
M. Sc. (Food & Nutrition)	10	
M. Sc. (Biotechnology)	10	
M. Sc. (Mathematics)	20	Bachelor Degree from any recognized University, with Mathematics as a subject for three years/ six semesters, with minimum 50% marks and adequate proficiency in English.
M. Sc. (Nano science)	05	Bachelor Degree in Chemistry, Mathematics, Physics, Biological Science OR and equivalent degree in related field with minimum 50% marks with adequate proficiency in English.
M. Sc. (Forensic Science)	10	Bachelor Degree in Forensic Science/ Physics/ Chemistry/ Mathematics/ Botany, Zoology/ Micro-Biology/ Biochemistry/ Engineering or Pharmacy with minimum 50% marks with adequate proficiency in English.
M. Sc. (Digital Forensics & Information Security)	10	B.E. or B. Tech. in CE, IT, EC, CS or BCA or B. Sc. Forensic Science/ CS/ IT/ Mathematics (with Computers as one of the subject) or equivalent, with minimum 50% marks with adequate proficiency in English.
Ph. D. PROGRAMME		
Ph. D.	15	A candidate should possess Master degree with a minimum of 55% marks Or equivalent Grade Point Average (GPA) in the related subject area from any recognized and reputed university.

RESOURCES



LABORATORIES

THE BIOTECH LAB: Besides regular teaching related equipments, the BIOTECH Lab houses a number of sophisticated government sponsored equipments like Thermal Cycler, Trans-Illuminator, UV-Visible Spectrophotometers, Nano Spectrophotometer, Phase Contrast Microscope with Image Projection System, High-Speed Refrigerated Centrifuge and BOD Incubators.

MOLECULAR BIOLOGY LAB: The objective of this lab is to strengthen Proteomics and Genomics research and experimental education for Biotechnology and microbiology courses. The lab is mainly dedicated to determining the 3D structure of proteins and other macromolecule, sequencing of DNA and DNA-protein interaction. This lab houses Gradient PCR, Elisa Reader, Fermenter, Plant Growth Chamber, De-freezer, etc.

MICROBIOLOGY LAB: This lab is equipped with Electro-Porter, Auto-Analyzer, Bacterial Counting System, BOD, COD, Electrophoresis System, Blotter System, Lyophilizer, etc. and is utilized to impart experimental knowledge to B. Sc. and M. Sc. students.

GENERAL & ADVANCED CHEMISTRY LAB: The Chemistry lab at CASH is fully equipped to conduct all the experiments pertaining to organic, physical and inorganic chemistry. This lab houses FT-IR, UVVIS, Zeta Potential Measurement Unit, Scientific Microwave Synthesizer, Computer Controlled Rheometer, Computer Interfaced Metallurgical Microscope, Centrifuges,

Microprocessor Controlled pH meter and Conductivity Meter, Ultrasound Measurement Unit, Dielectric Constant Measurement Unit, Ball Mill and Vacuum Ovens, etc.

The Department also boasts of a stand-alone wet research laboratory for water treatment, organic synthesis and material processing besides having its own instrument room.

GENERAL & ADVANCED PHYSICS LAB: The Labs in the Physics department are well equipped to perform all kinds of experiments for B. Sc. and M. Sc. courses, covering vast areas in physics such as Mechanics, Properties of Matter, Heat, Sound, Electricity and Magnetism, Optics, Modern Physics. Major equipment is Zeeman Effect, Frank-Hertz Experiments, GM counter, Millikan's Oil Drop, etc.

COMPUTER LAB: The computer laboratory at CASH is equipped with 45 Dell workstations which are connected via LAN. We provide 24 Mbps internet connectivity to enable students to learn online through MIT open courseware and NPTEL.

PSYCHOLOGY LAB: Well equipped with various standardized tools for the assessment of personality abilities along with various other mental health and behavioral assessment tools. The lab is a perfect place where students can take their initial steps towards becoming a professional psychologist.

THE LANGUAGE LAB: The Language Lab is equipped with one of the best multimedia language software available in the market. 'Hi-Class-Learn-To-

Speak' is installed on 35 student consoles, which is supervised by 1 trainer console, and is aimed at self-learning while focusing on skills like vocabulary building, pronunciation and grammar.

FORENSIC LAB: The Forensic Science Laboratory is a state-of-the-art lab with modern forensic testing facilities. It is equipped with top-of-the-line instruments such as DNA Analyzers & Sequencers, Spectrometers, Spectral Comparators, Fingerprint and Serology Testing Kits, etc. A digital forensic facility such as this aides the students to learn the nuances of cyber security. All students are provided hands-on

training on industry grade equipment keeping standard government protocols in mind and all exercises have been devised to keep up with the latest trends in forensic science.

LIBRARY

CASH library is a fully automated and has a rich collection of 8600 books in various disciplines of arts, sciences and humanities. The library subscribes to 60 national journals/ magazines and have access to JSTOR and Indiastat database. Library is accessible through Web-OPAC and has Wi-Fi connectivity.

LIFE BEYOND CLASSROOM



The life of a student is never confined to just a classroom. Student societies run several clubs that are dynamic and democratic entities at CASH and allow students to play leadership roles in recognizing their interests. Our clubs provides a wide variety of opportunities that enrich the experience of learning at CASH.

SOCIETIES

SARANG: SARANG is the cultural society of CASH which bears the responsibility of organizing inter and intra-college cultural activities on and off campus throughout the year. With a motivated team of selected students, the society ensures the vibrant ambience on campus by organizing an Annual Cultural Fest and extracurricular activities on monthly basis. The society also works like a catalyst to bind all the different communities, cultures, religions by celebrating all the festivals on the campus. SARANG runs the Drama & Theater Club,

Performing Arts Club, Music Club, Dance Clubs.

SPANDAN: SPANDAN is the resident sports society that symbolizes rhythmic palpitation and a never-say-die attitude. Justifying the attitude and the zeal of students on the campus, the SPANDAN enables students to develop an interactive and sporty sphere around them, both on and off campus. This society runs a Basketball Club, Volley Ball Club, Badminton Club and Lawn Tennis clubs.

SANGLAP: SANGLAP stands for the art of creative and constructive thinking vis-à-vis dialectic method, and the academic society stays true to its name. It signifies the multiplicity of thoughts and carefully constructed arguments. The society engages in organizing conferences, symposiums, and guest lectures by experts from diverse areas of study. The society also promotes interactive learning, collective thinking and infuses the culture of knowledge sharing within the campus. This society runs the Debate Club, MUN and the Content Writing clubs.

STUDENTS' ACHIEVEMENTS

Excellence is a principle that's woven through the fabric of life at CASH and this is the hallmark for the College's educational agenda which equally emphasizes on extra-curricular activities. We are proud of our students' many accomplishments and we make sure to celebrate their work regularly. Their achievements in diversified fields include Scholarships, University Medals and other honors of various kinds. CASH congratulates those individuals!

ACADEMICS

MS. ROOPAM BISHNOI, B. Sc. (H) CHEMISTRY

- Two months summer internship in Institute of Nano Science and Technology, Mohali, under the guidance of Dr. Ramendra Sudar Dey.
- Attended a 10-day National Initiative in Undergraduate Science (NIUS) Camp at Homi Bhabha National Institute, Mumbai.
- **MS. DEEPALI SHARMA, M. Sc. (Physics)** successfully completed a summer internship at Delhi University from June to July, 2017 on the topic "Development of Neutron Radiation Damage Model for Silicon Sensors."
- **MS. YOGESHWARI, M. Sc. (Physics)** successfully completed a summer internship at Delhi University from June to July, 2017 on the topic "Deposition of SnO₂ using Sputtering."
- **MS. HEENA CHAWLA, M. Sc. (Physics)** participated in a two week Science Academies Refresher course from the 3rd to 15th of April, 2017 on the topic "Material Preparation and Measurement of Properties" at the Indian Academy of Science, Bangalore.
- **MS. KRITIKA** qualified IIT-JAM examination in 2017.
- **MS. CHITRA NEHRA** got ICAR-NET, CSIR and UGC-JRF/ SRF. She completed her Ph. D. in 2017.
- **MS. RAJESH KUMAR** received DBT-BNIC fellowship for pursuing Ph. D.
- **MS. RAKESH VERMA, DST-SRF** cleared ICAR-NET.
- **MS. DAMINI & MS. RAMNEEK (M. Sc. Students)** participated in the Orientation

Program participated in an Orientation Programme at Central University of Punjab and Tuberculosis Centre, New Delhi.

- **MS. SONAM SAINI, M. Sc.** participated in the project entitled "Potable Water" at Delhi University, South Campus.
- **MS. MANISHA JAIN B. Sc. (H)**, completed a two months summer internship in Delhi University under the guidance of Prof. Ramakant, Dept. of Chemistry.
- **M. Sc. (Mathematics)** students participated in a two-day "Siddhant Maths Fest" at MINT, Jaipur.
- Students from the Department of Biosciences participated in popular lecture series "Food & Health Securities" supported by the Department of Biotechnology, New Delhi.
- Four Ph. D. students awarded doctorate degrees in 2017.
- B. Sc. (H) Forensic Science Third year students received government certified training at Himachal State Forensic Science Laboratory, Junga.
- B. Sc. (H) Chemistry students created "International Student Chapter of American Chemical Society" in the Department of Chemistry at CASH.





COLLEGE OF BUSINESS MANAGEMENT, ECONOMICS AND COMMERCE

...A Premier Women B-School with Indian Ethos & Values

THE FINAL FORMING
OF A PERSON'S
CHARACTER LIES IN
THEIR OWN HANDS.
-ANNE FRANK

Experiential Learning and Holistic Knowledge are the two pillars of the teaching Pedagogy of COBMEC. We have a firm belief that learning does not happen in classrooms alone and learning beyond classrooms is the kernel of management studies. Accordingly, we assign students various activities where they need to apply classroom learning to overcome impediments and find appropriate solutions for successfully handling difficult and tricky situations. We also encourage students to indulge in peer interaction through case studies and real-life scenarios. These initiatives test their decision making skills as well as didactic acumen and also prepare them for future challenges. Moreover, the students are given wide exposure through role plays, seminars, live projects, and in-depth situational analysis by our dedicated faculty members. For the holistic development of the students, we arrange a host of personality development sessions, mock interviews, pre-placement interviews, aptitude classes and more.

The college lives by the three letters, KSA. KSA stands for Knowledge, Skills and Attitude, a matrix which encapsulates the concepts of Knowing, Doing and Being. Knowledge alone is not sufficient; one must possess skills to implement it through one's unique vision. The KSA matrix ensures that students do not become subservient to theoretical aspects, but develop and deploy their own innovative and individualistic approach to break new grounds. The Being component of the participant is fine-tuned through in-depth interaction with people from the under-privileged strata of society with facilitation by numerous NGOs associated with the University.

Industry Interface				
S. No.	Name of Experts	Designation	Company	Topic
1	Ranga Katta	Management Consultant	S R Consultants, Madurai	Strategy Formulation
2	Satyarth Upadhyay	Management Consultant	M U Consultants, Ahmedabad	Business Plan and Project Management
3	J K Nagar	Senior Manager (HR)	Bank of Rajasthan, Jaipur	Contemporary Building, Employment and Career Opportunities
4	R K Kulkarni	Team Manager (Operations & Maintenance)	Bank of Rajasthan, Jaipur	Bank Operations Management and Insurance Selling
5	R K Jaiswal	Manager (HR)	Skycon Software, Sec 17	Team Building and Group Dynamics
6	Deepak Mishra	General Manager (IT)	Carbon India Pvt Ltd, Gurgaon	Software Project Management
7	Manish Singhal	Regional Manager	Hero Cycles India, Gurgaon	Innovation in Management
8	Manish Kumar	Regional Head	Carbon India Pvt Ltd, Gurgaon	Recent Trends in Management
9	Manish Kumar	Regional Manager	Carbon India Pvt Ltd, Gurgaon	Recent Trends in Management
10	Manish Kumar	Regional Manager	Carbon India Pvt Ltd, Gurgaon	Recent Trends in Management
11	Manish Kumar	Regional Manager	Carbon India Pvt Ltd, Gurgaon	Recent Trends in Management
12	Manish Kumar	Regional Manager	Carbon India Pvt Ltd, Gurgaon	Recent Trends in Management
13	Manish Kumar	Regional Manager	Carbon India Pvt Ltd, Gurgaon	Recent Trends in Management
14	Manish Kumar	Regional Manager	Carbon India Pvt Ltd, Gurgaon	Recent Trends in Management
15	Manish Kumar	Regional Manager	Carbon India Pvt Ltd, Gurgaon	Recent Trends in Management
16	Manish Kumar	Regional Manager	Carbon India Pvt Ltd, Gurgaon	Recent Trends in Management
17	Manish Kumar	Regional Manager	Carbon India Pvt Ltd, Gurgaon	Recent Trends in Management
18	Manish Kumar	Regional Manager	Carbon India Pvt Ltd, Gurgaon	Recent Trends in Management
19	Manish Kumar	Regional Manager	Carbon India Pvt Ltd, Gurgaon	Recent Trends in Management
20	Manish Kumar	Regional Manager	Carbon India Pvt Ltd, Gurgaon	Recent Trends in Management

DEAN'S PROFILE



Dr. D. K. Agrawal is a Professor of Marketing and Supply Chain Management with a Ph. D. in the area of cross discipline integration of Marketing, Supply Chain Management, Strategy and Information Technology from ABV-Indian Institute of Information Technology and Management, Gwalior. He has been an academician for more than 25 years at PG level Management education.

Prof. Agrawal joined IIM-Shillong in June 2008 as a founding faculty member and has held key academic and administrative responsibilities including Founding Chairman-PGP, Dean (Academics), Member-Board of Governors, Officiating Director, Chairman-IT Infrastructure Committee, etc. that gave him wide exposure and experience of administration.

He was conferred upon the "18th Dewang Mehta Business School Award" for Best Teacher in Logistics for the year 2010. He

has conducted many in-house and open Management Development Programmes in the areas of Sales, Marketing and Supply Chain Management for leading automobile, durable and FMCG industries. Prof. Agrawal is a very active researcher with more than 35 research papers published in reputed international and national journals. He has also developed and published 20 research-based Case Studies and has authored four books in the area of Logistics and Supply Chain Management.

He has undertaken many research projects for Union Public Service Commission (UPSC), EdCIL and more. AICTE awarded him a NCP Research Project worth Rs 30 Lacs for the Development of Best Practices of Demand Chain management in 2011. He has also been an Advisor to the Union Public Service Commission, New Delhi.

COLLEGE ACHIEVEMENTS

India Today magazine (2015) recognized Mody University as one of the Top 33 Universities in Hall of Fame and one of the top 5-Star Campuses in India. B-School Survey by Indian Management (2014) rated Mody University's MBA as A8. Higher Education Review (2015) ranked it 1st amongst Private Women's Universities and was ranked 11th among the top private universities in India. Career Connect (May 2015) ranked Mody University as the 2nd best Women's University of India and 9th among top private Universities of India. Career Connect (May 2015) placed the Commerce programmes of the University at 54th rank and the MBA programme at 47th rank all over India. Times B-School survey (2015) placed it among the top 150 B-Schools in India. Another survey in 2014 by The Week, one of India's leading magazines, ranked the COBMEC MBA programme as number one for women in the country and the 4th Best Business School in Rajasthan. CSR – GHRDC (2016) ranked Mody University among Top outstanding B-School of Excellence in India (17th rank). MBA Programme from College of Business Management, Economics and Commerce, Mody University, has been ranked 48th among the Top B-School in India by Careers360 in its 2017 survey.

PROGRAMMES AT A GLANCE

PROGRAMMES	INTAKE	ELIGIBILITY AND ADMISSION PROCEDURE
TWO-YEAR POST GRADUATE PROGRAMMES		
MBA (Dual Specialization) Finance, Banking & Insurance Systems & Business Analytics Marketing Human Resources International Business	120	<p>Candidates having valid CAT/ XAT/ NMAT/ CMAT/ MAT entrance test scores and minimum 50% marks (or Equivalent Grade Point) in Graduation in any discipline are eligible to apply.</p> <p>This degree must entail a minimum of three years of education after completing higher secondary schooling [Class 12 or equivalent].</p> <p>Candidates appearing in final year examination may also apply (subject to fulfilling the minimum eligibility conditions).</p> <p>Those who do not have CAT/ XAT/ NMAT/ CMAT/ MAT score may be asked to take our MMET (Mody Management Entrance Test).</p>
MBA (Family Business and Entrepreneurship)	60	<p>Selection will be based on Entrance Test Score, Academic consistency and performance in Personal Interview (PI)</p>
M. Com.	20	<p>B. Com./ B. Com. (H)/ BBA or an Equivalent degree in related field from any recognized University with a minimum of 50% aggregate marks (or Equivalent Grade Point) and adequate proficiency in English.</p> <p>This degree must entail a minimum of three years of education after completing higher secondary schooling (Class 12 or equivalent).</p> <p>Selection will be based on Graduation Marks and Personal Interview (PI)</p>
DUAL DEGREE PROGRAMME		
Five-Year Dual Degree BBA-MBA	60	<p>A pass in 10+2 examination from any recognized Board with minimum 50% Marks (or Equivalent Grade Point) in any stream and adequate proficiency in English. Selection will be based on 10+2 marks and Personal Interview (PI)</p>
THREE-YEAR UNDERGRADUATE PROGRAMMES		
B. Com. (Hons.) with CMA	30	<p>A pass in 10+2 examination from any recognized Board with minimum 50% Marks (or Equivalent Grade Point) in any stream and adequate proficiency in English.</p> <p>Selection will be based on 10+2 marks and Personal Interview (PI)</p>
B. Com. (Hons.)	60	
BBA	60	<p>A pass in 10+2 examination from any recognized Board with minimum 50% Marks (or Equivalent Grade Point) in any stream and adequate proficiency in English.</p> <p>Selection will be based on 10+2 marks and Personal Interview (PI)</p>
B.A. (Hons.) Economics	20	<p>A pass in 10+2 examination from any recognized Board with minimum 50% Marks (or Equivalent Grade Point) overall with mathematics and adequate proficiency in English.</p> <p>Selection will be based on 10+2 marks and Personal Interview (PI)</p>
DOCTORAL PROGRAMME		
Ph. D.		<p>Master's degree in Commerce/ Economics/ Management and allied areas (as applicable) or its equivalent with a minimum CGPA of 5.5 on a 10-point scale or equivalent as determined by the University. The candidate should satisfy the minimum eligibility criteria as per UGC Guidelines.</p> <p>Selection through Research Entrance Test and Personal Interview.</p>

PROGRAMMES OFFERED



We believe that education is a serious commitment, for you and for us. We are committed to quality in every aspect of the process of imparting education. Our faculty, their teaching methods, curriculum and infrastructure are benchmarked against the best B-schools in India. Continuous improvements are made to take the institute to being one of the best B-schools in the country.

TWO YEAR POST-GRADUATE PROGRAMMES

MBA (DUAL SPECIALIZATION)

The programme provides dual specialization in two areas of students' interest; the programme begins with a formal grounding in foundation courses in general management, with a blend of management functional areas i.e. Marketing, HR, Finance and Information Systems. At the end of first year, they are given to work on (i) an industry analysis and (ii) summer internship to have a practical exposure of corporate and business environment.

The specializations that students can opt from are ● Finance, Banking and Insurance ● Human Resources ● Systems & Business Analytics ● International Business

MBA (FAMILY BUSINESS AND ENTREPRENEURSHIP)

We offer comprehensive guidance and opportunities to potential entrepreneurs among the students, right

from idea evaluation to enterprise creation. The students are mentored through a series of activities such as:

- Evaluating ideas, developing business plans and supporting the implementation of these plans.
- Building relationships and facilitating interaction with venture capitalists, technology providers, enterprise-promoting agencies, commercial banks and other financial institutions.
- Creating an ecosystem of external mentors from different fields.

M. Com. (MASTER OF COMMERCE)

The M. Com. programme consists of 4-Semesters. The programme is career oriented in its design, course structure and teaching-learning process, and includes descriptive research oriented study modules on various subjects of Commerce & Management with options for electives. The syllabus

takes care of the requirement of the industry as well as academia. Research paper, organizational interaction/ internship, has also been included to bridge the gap between theory and practice.

FIVE-YEAR DUAL DEGREE BBA-MBA

This course provides an Undergraduate degree after three years followed by a Master's degree after two years.

We offer a unique integrated programme that equips an individual with both a Bachelor's Degree as well as a Master's Degree in Management. The intensive curriculum not only develops management skills in students but also shapes up their overall personality suited to the challenges of the global business scenario.

Students who want to acquire only an undergraduate qualification, will have an option of getting a Bachelor of Business Administration (BBA) Degree on successful completion of 3-years of the course. This option will have to be chosen at the end of the 2nd year.

UNDER GRADUATE PROGRAMMES

B. Com. (HONS.) WITH CMA

The three-year B. Com. (Hons.) with CMA programme equips students, with the knowledge and technical skills necessary to understand and participate in the modern business world along with exposure of international finance through CMA embedded syllabus.

B. Com. (HONS.)

The three-year B. Com. (Hons.) programme equips students, with the knowledge and technical skills necessary to understand and participate in the modern business world.

BBA (BACHELOR OF BUSINESS ADMINISTRATION)

BBA programme offers professional education in Business Administration for young women who wish to join as executives in industry,

business and non-profit organizations or to seek entrepreneurial or self-employment positions.

Our programme equips each individual with conceptual, analytical, communication skills and a healthy attitude to ensure excellent performance and committed service. The department has well-structured industry-oriented syllabi for students interested in management, finance, human resource management, and marketing through learner-centric teaching methods such as Case Studies, Role Play, Simulations, Field Visits and Project Work.

B.A. (HONS.) ECONOMICS

B.A. Economics (Hons.) programme of Mody University is a comprehensive programme structured to impart much required analytical skills that are needed to understand the complexities of how the economy works by giving a sound theoretical basis in economic theory supplemented by practical applications. The objective is to enhance student's employability and prepare them for higher studies in Economics, by providing emphasis on applied aspects of Economics.

The curriculum is industry based and benchmarks itself against the very best. The upgraded curriculum incorporates highly sought after courses like Environmental Economics, Development Economics, Applied Econometrics and Financial Economics.

Moreover, the inclusion of mathematics and statistics serves to develop strong foundations and cultivate statistical thinking by acquainting them with statistical methods and their applications in different fields of economics. Also, the students are trained in data analysis using software packages like SPSS, Eviews, STATA.

DOCTORAL PROGRAMME

We offer full-time Ph. D. programmes in all disciplines of Management, Economics, Commerce and allied areas of discipline.



RESOURCES



LIBRARY

- The state-of-the-art library consists of wide range of books authored by top management experts and business leaders around the world.
- The library has over 12,815 books with approx. 6660 titles on functional and contemporary management, economics and commerce along with the whole gamut of world literature.
- Subscription to over 42 national and international journals and 19 magazines pertaining to business management and current affairs, CDs and audio visual resources at the disposal of students and teachers.

DIGITAL LIBRARY: It facilitates students to access valuable information across diverse domains, with just a click and connect with the world of immense knowledge.

EBSCO BUSINESS SOURCE ELITE: It offers access to 5,138 indexed and abstracted periodicals and 10,000 company profiles.

SPSS 17.0: It's a widely used and acclaimed computer programme used for statistical analysis. It includes various fundamental software such as descriptive statistics, explore, descriptive ratio, t-test, ANOVA, correlation and non-parametric test.

CMIE-PROWESS: It is a database which enables

querying and research through a structural data selection process. It contains normalized data on about 27,000 Indian companies that is applicable for financial analysis, industry analysis, feasibility studies among others and is updated daily for users.

COMPUTER LABORATORIES

We have three Computer Laboratories equipped with 93 DELL computers with avant-garde configuration connected to LAN and high-speed Internet connectivity. The College emphasizes on conjuring up an e-study and e-learning environment using cutting-edge tools and innovative techniques.

COMMUNICATION SKILLS & LANGUAGE LAB

We offer courses in five foreign languages viz. Chinese, Japanese, German, French and Spanish in order to ramp up communication skills of students and broaden their horizon. Learning a foreign language expands their repertoire of skills and gives them a distinct advantage.

Top-of-the-line audio-video equipment is used to expedite interactive and lively atmosphere for language learning. The sessions encompass Listening, Speaking, Reading and Writing.

LIFE BEYOND CLASSROOM



The bright and versatile students of College of Business Management, Economics and Commerce have formed a host of forums and societies to engage in constructive activities as a part of beyond the classroom learning.

INDUSTRIAL VISITS

In order to give practical exposure to the real-life corporate world, Industrial Visits are regularly organized. The industries which the students visited were Parle (Neemrana), Bikaji (Bikaner), Mayur Suitings (Bhilwara) and Coca-Cola, Philips and Vardhman Textiles (Baddi). After arranging a walk-through within the firm, the officials at these industries briefed the students about profiles of various departments and answered their queries on functional areas of management i.e. Production, Finance, Marketing, and HR.

NATIONAL CONFERENCE

The college regularly conducts workshops, seminars, and conferences to build an academic environment. 2nd National Conference 'New Paradigms in Management, Economics, and Commerce: A Road Ahead (NPCNMEC-2017)' was organized in February 2017 which saw participation from academic luminaries from all across the country.

BUSINESS SUMMIT & GUEST LECTURES

Lectures by eminent members of Industry and Academia are regularly organized.

START-UP FEST

A three-day Entrepreneurship Awareness Camp for MBA students was jointly organized by Mody University and Startup Oasis (a Jaipur-based incubation centre) to create entrepreneurship awareness among college students. During this training programme, students were given hands-

on experience on entrepreneurship through various frameworks and business models. An Industry Visit to Jaipur on the last day was also part of the programme.

ZEAL-2016

COBMEC organized an inter-college sports competition, where students from the colleges showed their sports talent in various competitive events.

MAGNUM OPUS (Student Newsletter) is an initiative by students, supported and guided by faculty members. It is a creative endeavor where students showcase their ideas through articles and cartoons.

PRAGYAA - A Journal of Management (ISSN 0975-9603) is a tool to inform and educate the academic fraternity about current business developments and practices. It is published twice a year and includes research articles in new areas and in-depth analysis of various management functions.

OUR FORUMS:

YUKTAM- HR Forum

MARCATUS- Marketing Forum

VITTAGYAN- Finance Forum

KHUSHI- Social Service

OUR SOCIETIES:

IRA- The Academic Society

MRIDA- The Cultural Society

LAKSHYA- The Sports Society

COLLEGE OF ENGINEERING AND TECHNOLOGY

YOU GAIN STRENGTH, COURAGE,
AND CONFIDENCE BY EVERY
EXPERIENCE IN WHICH YOU
REALLY STOP TO LOOK FEAR IN
THE FACE. DO THE THING YOU
THINK YOU CANNOT DO.
-ELEANOR ROOSEVELT

The College of Engineering and Technology (CET) is one of the most vibrant colleges of Mody University. CET campus has a tranquil environment that enables students to focus on their academics. The college offers exceptional opportunities for education and research in several provinces of Engineering and Technology like Computer Science & Engineering, Electronics & Communication Engineering, Electrical Engineering, Mechanical Engineering, Bio Medical Engineering, Nuclear Science & Technology, and Nano Science & Technology. Faculty and Staff at CET are devoted to provide unrivalled and excellent knowledge to the students that implants strong basic as well as advanced knowledge. The college has state-of-the-art infrastructure, encompassing of all major facilities like well-equipped Laboratories and Workshops, Library having good collection of Books, Seminar Hall and Auditorium. It also offers many co-curricular and extra-curricular activities to make life of students at campus extremely vivacious and exciting. CET aims to create Techno-Managers for future demands of the Industry with emphasis on social sensitivity, leadership qualities, and an eye to grip opportunity at global outlook.



DEAN'S PROFILE



Prof. (Dr.) V. K. Jain has above 21 years of teaching & research experience which includes his 11 years of experience as Director, and Dean Academics in various renowned and prominent institutions of India. He did his M. Sc. (Electronics), MBA, M. Tech. (CS), Ph. D. in Computer Science and Engineering from Devi Ahilya University, Indore and embraces a wide and extensive experience in Autonomy Implementation, NBA Accreditation, NAAC Accreditation, ISO Certification, numerous norms and policies of various universities, AICTE and UGC. He also has the experience of being the Affiliate as well as Chairman in many academic bodies such as Board of Studies, Academic Council and Governing Body of educational institutions.

Prof. Jain served as Controller of Examination for 3 years in an autonomous college. His research areas include ERP, RFID & EDI Technologies, IT-enabled SCM,

E-Governance, Software Engineering, Total Quality Management and Research Methodology. He has also contributed to several major research projects at Anchor Electricals Pvt. Ltd.-Haridwar, Texplas Group of Industries-Haridwar IRDE, DRDO-Dehradun, THDC-Rishikesh. There are around 170 publications to his credit that spans books, cases, prevalent articles, research papers, monographs etc. He is known for his leadership qualities at CET and he plays a very important role in planning and directing University activities related to student services and campus life. As an administrator, he also coordinates admissions, health services, financial aid, housing and social programmes for students. Prof. (Dr.) V. K. Jain has also been conferred upon 'Siksha Gaurav Puruskar 2016' by Centre for Education Growth and Research, New Delhi for his exemplary contribution in Technical Education for the last 21 years.

COLLEGE ACHIEVEMENTS

College of Engineering and Technology (CET) is known as one of the best colleges in the domain of Engineering and Technology. There are plentiful triumphs that make CET stand out in the crowd and here are some of the major achievements of CET as a college:

- CET has been ranked as the 'Top Engineering College of Excellence' in the GHRDC-CSR survey.
- CET has set up Accenture and Microsoft innovation laboratories to facilitate and benefit students.
- CET offers cutting edge programmes such as B. Tech. CSE with specialization in BDA, IoT, Information Security and Cloud Technology with IBM.
- N. K. Joshi was invited to participate in the IAEA's International Nuclear Security Education Network (INSEN) Annual meeting-2016 held in Vienna, Austria during July 22-26, 2017. The entire trip was fully sponsored by the Partnership of Nuclear Security (PNS), Department of States, USA.
- Organized International Conference on Recent Trends in Renewable Energy & Smart Grids during Feb. 24-25, 2017.
- Faculty members published around 175 Research Papers in 2016-17.
- Signed MoU with Ericsson for Advance Radio Access Network (ARAN) Technology.

PROGRAMMES AT A GLANCE

PROGRAMMES	INTAKE	ELIGIBILITY	
FOUR-YEAR B. Tech. PROGRAMMES			
Computer Science and Engineering (CSE) CSE (Specialization in Big Data Analytics)(IBM) CSE (Specialization in Internet of Things)(IBM) CSE (Specialization in Cloud Computing)(IBM) CSE (Specialization in Information Security)(IBM)	240 40 20 20 20	Passed 10+2 from CBSE or equivalent examination with Physics and Mathematics as compulsory subjects along with one of the Chemistry/ Computer Science/ Bio Technology/ Biology with adequate proficiency in English. Admission will be based on the candidate's rank in Mody University's Engineering Entrance Test/ JEE (Mains)/ Any State Level Engineering Entrance Test.	
Electronics and Communication Engineering ECE (Specialization in Robotics) ECE (Specialization in Telecommunication & N/W) ECE (Specialization in VLSI and Embedded Sys.)	60 20 20 20		
Electrical Engineering EE (Specialization in Renewable Energy) EE (Specialization in Control and Automation) EE (Specialization in Power Electronics, Drives and Robotics.)	30 10 10 10		
Mechanical Engineering ME (Specialization in Product Design and Development) ME (Specialization in CAD/CAM) ME (Specialization in Thermal Engineering)	10 10 10		
Nuclear Science and Technology	30		
Biomedical Engineering	30		
THREE-YEAR PROGRAMMES			
B.C.A. (Bachelor of Computer Applications)	30		10+2 from CBSE, or its equivalent from any recognized Board,in any stream with adequate proficiency in English.
FIVE-YEAR INTEGRATED (B. Tech.+M. Tech.) PROGRAMMES			
Computer Science and Engineering	30		Passed 10+2 from CBSE or equivalent examination with Physics and Mathematics as compulsory subjects along with one of the Chemistry/ Computer Science/ Bio Technology/ Biology with adequate proficiency in English. Admission will be based on the candidate's rank in Mody University's Engineering Entrance Test/ JEE (Mains)/ Any State Level Engineering Entrance Test.
Electronics and Communication Engineering	30		
FIVE-YEAR INTEGRATED M.B.A. (Tech.) PROGRAMMES (B. Tech.+M.B.A.)			
Computer Science and Engineering	30		
Electronics and Communication Engineering	30		
TWO-YEAR POSTGRADUATE PROGRAMMES			
M. Tech. (Computer Science and Engineering)	18	B.E./ B. Tech./ M. Sc. in related field (M.C.A. For Computer Science and Engineering only) with a minimum of 50% marks. Selection will be based on the merit of the candidate's graduation marks, entrance test and interview conducted.	
M. Tech. (Computer Science and Information Security)	18		
M. Tech. (Wireless Communication Technology)	18		
M. Tech. (VLSI Design)	18		
M. Tech. (Renewable Energy)	18		
M. Tech. (Nuclear Science and Technology)	18		
M. Tech. (Nano Science and Technology)	18		
M.C.A. (3 YEARS)	60	Graduation in any discipline with minimum 50% marks and Mathematics atleast upto 10+2 level.	
M.C.A. LATERAL ENTRY (2 YEARS)	60	BCA/ B. Sc. (CS/ IT)	
B. Tech. LATERAL ENTRY		Diploma in any discipline/ B. Sc. (PCM)	
Ph. D. IN ALL AREAS OF ENGINEERING AND TECHNOLOGY		Post-Graduation in relevant branch of Engineering/ Technology with a minimum of 60% marks.	

PROGRAMMES OFFERED

COMPUTER SCIENCE AND ENGINEERING DEPARTMENT

The Department of Computer Science & Engineering is involved in providing quality education at Under Graduate (UG), Post Graduate (PG) and Doctoral Levels. The department imparts world-class education, training and research and the contents of the courses provided by the department are continuously updated and the laboratories have been modernized to incorporate the rapid changes in technology and industry. The department also promotes active Industry-Institute collaborations by identifying areas of interest and taking part in sponsored research projects and consultancy services. The department is committed to preparing engineers who will be highly sought after, productive, and well-respected for their work and who contribute to new developments in computing. More over the department gives students in other disciplines an appropriate foundation in computing for their education, research, and experiences after graduation. Apart from core B. Tech. in CSE programme, the department also offers B. Tech. in CSE along with any one of the specialization mentioned below:

BIG DATA ANALYTICS IN ASSOCIATION WITH IBM

Big Data Analytics is the use of advanced analytic techniques against very large, diverse data sets that include structured/ unstructured and streaming/ batch, and different sizes from terabytes to

zettabytes. Analyzing big data allows analysts, researchers, and business users to make better and faster decisions using data that was previously inaccessible or unusable. Using advanced analytics techniques such as Text Analytics, Machine Learning, Predictive Analytics, Data Mining, Statistics, and Natural Language Processing, businesses can now analyze previously untapped data sources independent or together with their existing enterprise data to gain new insights resulting in significantly better and faster decisions.

CLOUD COMPUTING IN ASSOCIATION WITH IBM

Cloud Computing, often referred to as simply "The Cloud," is the delivery of on-demand computing resources, everything from applications to data centers, over the internet on a pay-for-use basis.

- **Elastic Resources-** Scale up or down quickly and easily to meet demand.
- **Metered Service-** So you only pay for what you use.
- **Self-Service-** All the IT resources you need with self-service access.

INFORMATION SECURITY IN ASSOCIATION WITH IBM

Information Security deals with enforcement of policies in order to protect the confidentiality, integrity and availability of computer system data from those with malicious intentions. IT security specialists are almost always found in any major enterprise/ establishment due to the nature and value of the data within larger businesses. They are responsible for keeping all of the technology





within the company secure from malicious cyber-attacks that often attempt to breach into critical private information or gain control of the internal systems.

INTERNET OF THINGS IN ASSOCIATION WITH IBM

The Internet of Things is now a reality due to the convergence of several technologies, including wireless communications, micro-electrical systems and of course, the Internet. A “thing” is any object with embedded electronics that can transfer data over a network-without any human interaction. As almost everything starting from cars to crops to conveyor belts, becomes connected, IoT is changing the way businesses operate. By combining IoT data with cognitive computing, businesses can extract valuable insights to improve virtually every aspect of their operations and enable innovative, new business models.

ELECTRONICS AND COMMUNICATION ENGINEERING DEPARTMENT

The Department of Electronics and Communication Engineering (ECE) was established in the year 1998 to impart quality Under Graduate (UG) education exclusively for women candidates. The department has a rich tradition of teaching and research and is widely recognized as a pioneer in Electronics and Communication Engineering education in India. As it reached its heights, it started adding PG programmes in VLSI Design and Wireless Communication Technology, a five year integrated MBA Tech. programme, and a five year integrated B. Tech. +M. Tech. programme. From last academic

session, it started offering B. Tech Programmes with specialization in Telecommunication Systems & Networks, VLSI & Embedded Systems, Robotics.

TELECOMMUNICATION SYSTEMS & NETWORKS

This specialization course includes specialized subjects like Telecommunication Switching Systems, Advanced Radio Access networks in association with Ericsson, Adhoc Networks etc. As there is a rapid growth of telecommunication which includes a huge growth of mobile communication with the introduction of 4G Services pan-India, this course will be of immense help to students to pursue career the telecommunication industry.

VLSI & EMBEDDED SYSTEMS

Specialized subjects offered in this programme are HDL Programming, MEMS, Advanced Embedded System etc., The VLSI and Embedded Systems covers the fundamentals and engineering aspects of designing and developing IC based systems. Traditionally, VLSI Technology emerged out of a successful conglomeration of two streams: Material Science and Electrical Engineering. The state-of-the-art VLSI Technology requires research in physical devices as well as novel design and development of electrical circuit. The programme will focus on developing hands-on skill for designing semiconductor devices and circuits, architecting systems using embedded components such as CPU, memory and peripherals. Students will be trained in several topics that cut across different domains, starting from the lowermost level of physical devices to the top level of application development.

ROBOTICS

Robotics deals with the design, construction, operation and use of robots, as well as computer systems for their control, sensory feedback, and information processing.

These technologies are used to develop machines that can substitute for humans. Robots can be used in any situation and for any purpose, but today many are used in dangerous environments (including bomb detection and de-activation), manufacturing processes, or where humans cannot survive. Robots can take on any form but some are

made to resemble humans in appearance. This is said to help in the acceptance of a robot in certain replicative behaviors usually performed by people. Such robots attempt to replicate walking, lifting, speech, cognition, and basically anything a human can do. Many of today's robots are inspired by nature, further contributing to the field of bio-inspired robotics. Collaboration is initiated with Industries that manufacture robots and a Robotic Lab is being set up as we speak. Subjects offered in this Programme are Robotics & Control and Robot programming.



MECHANICAL ENGINEERING DEPARTMENT

THERMAL SYSTEM ENGINEERING

Thermal System Engineering is a specialized sub-discipline of Mechanical Engineering that deals exclusively with heat energy and its transfer between not only different mediums, but also of other usable forms of energy. A thermal engineer will be armed with the expertise to design systems and processes to convert energy generated from various thermal sources into chemical, mechanical or electrical energy depending on the needs. Obviously, all thermal engineers are experts in all aspects of heat transfer. Many process plants contain a number of components and systems which have to be designed in terms of their heat transfer. It is particularly important to ensure that not too much heat is retained so the component or process is not disrupted.

PRODUCT DESIGN AND DEVELOPMENT

The product design and development includes the

entire spectrum of activities for a given product, starting with identification of a need and extending through design and development, production, operational use, sustenance of support and product retirement and eventually its disposal. Concurrent engineering is a systematic approach which takes into consideration all aspects of life cycle engineering in most appropriate manner at the product design stage. This research study is taken to develop design methodology for the design of product from the life cycle engineering point of view.

COMPUTER AIDED DESIGN

CAD is an acronym for Computer-Aided Design, whereas CAM stands for Computer-Aided Manufacturing. CAD/ CAM is an integrated engineering process which has now become a hot career choice for engineering students. Talking about the capabilities of CAD/ CAM software, it would not be wrong to say that it has revolutionized the way of designing is done.



Performing the dual function of designing machine products and automating the manufacturing process of such products, CAD/ CAM tools have facilitated businesses to run smoother and faster. It is difficult to find an industry today which works without CAD/ CAM specialists in their ranks. The specialization in CAD/ CAM offers students with work environment beyond the shop floor which is suited for girl candidates.

ELECTRICAL ENGINEERING DEPARTMENT

RENEWABLE ENERGY

India, the second largest country in the World in terms of population has been passing through a phase of unprecedented demographic changes and in today's scenario, the renewable energy sector is growing fast across the world providing more than 6.5 millions of job worldwide. Renewable Energy is only way to reduce our dependence on fossil fuels and mitigate gas emissions. Without renewable vision, sustainable development is not holistic and cannot be achieved.

CONTROL AND AUTOMATION

Automation will continue to play an increasingly important role in the global economy as well as our daily lives. The Automation and Control Engineering Technology Programme provides the knowledge and management skills needed to pursue a rewarding career in the field of automation. Automation professionals are responsible for the direction, definition, design, development/

application, deployment, documentation, support of systems, software, equipment used in control systems, manufacturing information systems, systems integration, and operational consulting.

POWER ELECTRONICS, DRIVES AND ROBOTICS

The control and conversion of electric power using solid-state techniques are now commonplace in both the domestic and industrial environments. Good knowledge and understanding of the diverse disciplines encompassed by power electronics devices, converters, control theory and motor drive systems is therefore essential to all power engineers. This course aims to provide a specialist education in power electronics, drives techniques and control of every motion with robotics covering key fundamental principles along with modern applications and current practices.

BIOMEDICAL ENGINEERING DEPARTMENT

Biomedical Engineering is the application of engineering principles and techniques to the medical field. This field seeks to bridge the gap between engineering and medicine. It combines the design and problem solving skills of engineering with medical and biological sciences to improve healthcare diagnosis and treatment.

Biomedical Students will learn the following:

Basic Biology and Human Physiology, Basic Chemistry Knowledge and Laboratory Techniques, Human Biological Systems in Terms of Fundamental Physics and Engineering Principles, Knowledge of Biomaterials, Biomechanics and Related Fields.



NUCLEAR SCIENCE AND TECHNOLOGY DEPARTMENT

B. Tech. in Nuclear Science and Technology has been introduced from the academic year 2017-2018. India at present has 22 operating nuclear power plants that supply 4% of the nation's total energy consumption. It aims to supply 25% of electricity from nuclear power by 2050. Trained personnel will be required for upcoming nuclear power plants and associated facilities in India.

M. Tech. in Nuclear Science & Technology is a unique programme, the only one of its kind in India, which trains women in an advanced multidisciplinary programme for the nuclear industry and research to play a leading role in the global civilian nuclear power industry. Nuclear

science and technology is an intellectually exciting, dynamic and expanding field, supporting a wide range of applications of societal welfare and helping the country in achieving energy, health and food security.

NANOSCIENCE AND TECHNOLOGY DEPARTMENT

M. Tech. in Nanoscience and Technology will train students to understand the nanoscale phenomena responsible for many interesting properties of material and innovative technologies leading to new devices. Nanoscience is an interdisciplinary field where physics, chemistry and biology at sub-atomic realm intersect with electronics engineering, communication technology, mechanical engineering and instrumentation techniques.

RESOURCES

Mody University has six colleges under it and there are dedicated libraries for all the streams available. CET Libraries play a great role in boosting the knowledge of the students. All the libraries are part of Developing Library Network (DELNET), which delivers the libraries to access to the database of seven hundred thirty-four national and international libraries. The students and faculty members can view 35,10,946 records, which comprises of books, thesis and dissertations and also articles of numerous periodicals. DELNET offers Inter Library Loan (ILL) facility for books and articles of periodicals at a fast pace. More than 35,270 books with 1,750 CDs and 200 video cassettes and periodicals are available. It has a variety of materials, which includes course books along with the books for overall development

and remove reading, in addition to national and international journals. The library is a member of INDEST and their competent and qualified staffs assist the students with the rich resources of the library effectively.

In order to provide world class education and make students explore the practical side of the course, the CET department has built state of the art laboratories with devices that are mostly imported from the United Kingdom. Strength of Material laboratory at CET is intended for familiarizing the students with different types of machines to test the mechanical properties of materials. This laboratory comprises equipment like UTM, Hardness Testing Machines, Impact Testing Machines etc.



LIFE BEYOND CLASSROOM

College of Engineering and Technology (CET) offers its students a platform where they can excel and groom their personalities. CET provides opportunities where students can explore their talents & skills not just through studies but also through beyond classroom activities. It is compulsory for the students at CET to take up summer internships and to avail industrial training. It ensures that the students are proficient and expert in their arena. Regular industrial visits to renowned companies are organized by the college in order to provide students with real-time experience to the industrial operations. Regular guest lectures by veteran faculties are conducted to motivate & encourage the students to work hard and efficaciously achieve their goals. Numerous cultural events are also organized within the University campus to boost up the morale of students and to keep them stress-free. The College has also been endowed with many sport courts that encourages women towards playing various games like Tennis, Badminton, etc. The CET division of the Mody University is a profound technical department and the college offers proper exposure to the students through industrial visits.

MODY UNIVERSITY 2018-19

Below are few important industrial visits of the CET students:

- B. Tech. ECE-45 students with 3 faculty members visited Hydel Project (Power Plant) at Manali and Coca-Cola Plant at Panchkula
- B. Tech. CSE-60 students with 5 faculty members visited ISRO's Vikram A. Sarabhai Science Community Centre at Ahmedabad, Bhaskarcharya Institute for Space Application and Geo Informatics, Gandhinagar and ONGC, Ahmedabad during 10-15 September, 2016



COLLEGE OF FASHION DESIGN AND MERCHANDISING

FASHION IS NOT
SOMETHING THAT
EXISTS IN
DRESSES ONLY.
FASHION IS IN THE
SKY, IN THE
STREET, FASHION HAS
TO DO WITH IDEAS,
THE WAY WE LIVE,
WHAT IS HAPPENING.
-COCO CHANEL

The College of Fashion Design and Merchandising (CFDM) is committed to prepare budding and industry-ready fashion designers, merchandisers and lifestyle accessory designers, eager to carve out a niche in the ever-dynamic fashion industry. CFDM firmly believes that in-depth understanding of trends, ingenious design aesthetics and unwavering zeal along with knowledge of cultural, historical, sociological and economic components of the fashion domain are vital to become a professional fashion designer.

CFDM strives to inculcate the above distinguished traits through its rigorous and comprehensive curriculum which is laced with cosmic outlook. Our unique curriculum has the right blend of Industry-University interface that enriches students with hands on experience and academic excellence.

The collaborations of CFDM with brands, art & craft NGOs, buying and export houses and renown designers help students with Industry simulated working atmosphere.

Our students receive opportunities to travel to fashion destinations such as Milan, Paris, London, New York, and Mumbai. CFDM encourages students to employ advanced technologies to inject vigor and vitality into their body of work, but not at the altar of artistic finesse.

One of the most significant objectives of CFDM is to transform students' flair into forte and aptitude into expertise without tampering with their intrinsic talent. The CFDM curriculum ensures that our graduates have all the available options at their disposal-to fetch cushy jobs, become freelance designers, create their own line of fashion or to embark on an entrepreneurial odyssey.



MESSAGE



Welcome to the College of Fashion Design and Merchandising (CFDM), Mody University. It gives us immense pleasure to welcome you on-board a creative journey, landscaped with vibrant milestones.

Fashion, as you are aware of, is a billion dollar Industry, but the stereotypes in India have yet to let it open its vast commercial scope to thousands of young women who have a natural flair for creativity but lack a formal education in the domain. Studying fashion therefore involves imagination, innovation, discipline, high focus levels and understanding client mandates.

In the past decade and a half, the professional world of fashion in India has expanded to much more than the art of designing clothes. There are several fields to choose from today. You could be a celebrity stylist, a fashion editor or editorial

stylist, a shop window designer, a fashion consultant for commercials, apparel or accessory designer, a merchandiser, a fashion buyer, retail expert or an entrepreneur who brings international fashion brands to India.

There is a vast scope and excitement in the field of Fashion Design & Merchandising. College of Fashion Design and Merchandising (CFDM) offers a wide variety of innovative UG & PG programmes in Fashion Design, Fashion Merchandising, Fashion & Lifestyle Accessory Design. The College also offers a PG diploma in Fashion Merchandising.

We encourage you to join College of Fashion Design and Merchandising (CFDM) and embark upon your creative journey.

COLLEGE ACHIEVEMENT

CFDM's Advisory Board Members comprise of leading designers, CEO's of prestigious fashion brands, Academicians of status such as Mr. Prasad Bidappa (Bangalore based Fashion Designer), Ms. Puja Arya (Jaipur based Fashion Designer), Mr. Rohit Kamra (Jaipur based Fashion Designer), Mr. Arun Palawat (Director, ZariSilk India Pvt Ltd Jaipur), Ms. Viloo Mirza (former Director NIFT Gandhinagar), Ms. Archana Shastri (academician and former Chairperson NIFT Delhi).

PROGRAMMES AT A GLANCE

PROGRAMMES	INTAKE	ELIGIBILITY
FOUR-YEAR PROGRAMMES		
Bachelors of Design (Fashion Design) [BFD]	40	This Programme is open to students on completion of 10+2 or equivalent, in any discipline, with minimum 45% marks Procedure-Online Test, Situational Test and Personal Interview along with Portfolio.
Bachelors of Design (Fashion and Merchandising) [BFM]	40	
Bachelors of Design (Fashion and Lifestyle Accessory Design) [BFLAD]	40	
TWO-YEAR PROGRAMMES		
Masters of Design (Fashion Design) [MFD]	20	This Programme is open to Graduates in Fashion Design or equivalent with minimum 50% marks. Procedure -Interview along with Portfolio.
Masters of Design (Fashion Merchandising) [MFM]	20	This Programme is open to business and commerce graduates, graduates from any stream or equivalent with minimum 50% marks. Procedure -Interview along with Portfolio.
ONE-YEAR POST GRADUATE DIPLOMA		
Post Graduate Diploma in Fashion Merchandising [PGDFM]	20	This Programme is open to business and commerce graduates, graduates from any stream, MBA or equivalent with minimum 50% marks. Procedure -Interview along with Portfolio.
Ph. D. in Fashion, Design and Merchandising	7	Admitted doctoral students will be governed by Ordinances and Regulations for Doctoral Programme of Mody University.



PROGRAMMES OFFERED

The Programmes offered at CFDM engage the students with current ideas and approaches in their particular field and inspire them to develop their own identity in areas of their interests.

BACHELOR OF DESIGN-FASHION DESIGN [BFD] (Four Years)

The programme encapsulates the creative and technical nuances of the apparel design process. The students acquire skills in the realms of apparel construction techniques, flat pattern design, material exploration, draping, textile study, fashion illustration and portfolio development.

BACHELOR OF DESIGN-FASHION AND MERCHANDISING [BFM] (Four Years)

This Programme combines the practical components of design and product development with business skills. It is ideal for students who are interested in the management and retail side of the industry, freelancers and independent designers or aspiring to become entrepreneurs. Emphasis is placed on Soft Goods, Fashion & Lifestyle-oriented products.

BACHELOR OF DESIGN-FASHION AND LIFESTYLE ACCESSORY DESIGN [BFLAD] (Four Years)

Lifestyle & Accessory Design is an area of increasing importance for global brands. This course focuses on design methodology, fashion trends & forecast interpretations, business practices and project management.

MASTER OF DESIGN-FASHION DESIGN [MFD] (Two Years)

This programme instils a holistic and an all-encompassing approach in students with regards to fashion designing and beyond, which enables them to push the envelope and break new grounds. With a Masters in a specialized field, designers become highly sought-after professionals in the world of fashion.

MASTER OF DESIGN-FASHION MERCHANDISING [MFM] (Two Years)

This Programme aims at giving students the opportunity to further develop their acquired skills through a transversal analytical approach of the fashion industry. It is designed to impart understanding of Fashion Merchandising, Fashion Product, Product Development, Research, Trends,

Forecast, Fabrics and Trims, Costing and Pricing. This programme prepares students for a career in mid-management level at export houses, designer labels and buying firms in the apparel industry.

POST GRADUATE DIPLOMA IN FASHION MERCHANDISING [PGDFM] (One Year)

This programme aims at giving students an opportunity to further revamp their acquired skills in various streams of their graduation in the fashion business, apparel production and sourcing. This programme prepares the students to work as merchandisers in apparel houses, export agencies, buying firms or to become entrepreneurs.

Ph. D. IN FASHION, DESIGN & MERCHANDISING

This programme is geared to enhance design-related knowledge in a comprehensive range of scales with the confidence that design research makes vital contributions to understanding, evaluating and eventually improving the design world. Admitted doctoral students will be governed by Ordinances and Regulations for Doctoral Programme of Mody University.



RESOURCES



CFDM laboratories are equipped with the latest technology, iMac computers and fashion industry equipment, highly equipped Library with Trend & WGSN Forecast and a Resource Center with costumes, fabrics, trims, handicrafts and other art materials.



LIFE BEYOND CLASSROOM

CFDM OUT CAMPUS EXHIBITION EVENTS

CFDM organizes numerous out campus exhibitions and fashion events that showcase and present the Art & Design work by students and faculty members. During this time, CFDM students dynamically engage with a wider & diverse audience that includes the media, press, interested parents, aspiring design students, members of the art & design community as well as eminent academicians and reputed designers. During these events, CFDM also organizes career counseling sessions and creative workshops for aspiring entrants.

CFDM INTER COLLEGIATE WORKSHOP EVENTS

CFDM also organizes workshops outside the campus. This is done to not only give students the much required exposure, but to also enable them to interact with other college students who are learning related soft and hard material skills such as jewelry making, metal casting, sandstone carving etc.

CFDM FIELD TRIPS

CFDM organizes field trips outside the campus to enable the students gain a wider perspective and in-depth knowledge pertaining to Fashion Culture, History, Sociology and Economy, Sustainability, Business and Industry.

CFDM INTERNSHIP

CFDM students are sent for internships at

leading Brands, Art & Craft NGOs, Buying Firms, Export Houses, Designers, Pattern Masters and Designers. Observing these experts allows the students to imbibe the elementary skills of the trade while giving them a first-hand experience of how the work life experience is.

CFDM ELECTIVES

Students get additional exposure within the campus through interactive inter-collegiate events and electives that help students gain the much required insight into specialized fields such as 'Gender Justice & Law', Bhagvad Gita, Computer Programming, Essential English and Foreign Languages.





THE TRUE
SIGN OF
INTELLIGENCE
IS NOT
KNOWLEDGE
BUT
IMAGINATION.
-ALBERT EINSTEIN



COLLEGE OF LAW AND GOVERNANCE

ALL THE POWER IS
WITHIN YOU; YOU CAN
DO ANYTHING AND
EVERYTHING. BELIEVE IN
THAT; DO NOT BELIEVE
YOU ARE WEAK, STAND
UP AND EXPRESS THE
DIVINITY IN YOU.
-SWAMI VIVEKANANDA

The objective of the College of Law and Governance (CLG) is to equip women with legal armoury and human values so that they can serve the society as competent and thoughtful lawyers. The distinguished lawyers enjoy luminous prestige in society and also make a handsome living. The profession has a noble quality attached to it as one gets the chance to give something back to the society while practicing law.

In an era of technological advancements, globalization and industrialization, the role of lawyers is no longer restricted to courts alone. There are a volley of Law firms, MNCs and business houses who hire lawyers to look after their or clients' legal affairs. The CLG would like to see its graduates in the positions of judges and advocates plying their trade in High Courts and the Supreme Court.

There are multiple specializations like Corporate Law, Criminal Law, Tax Laws, Cyber Law, IPR Laws, Environmental Law and Media Law and others, that have opened up several new avenues for competent lawyers and has made the profession supremely lucrative.

Our curriculum is modelled on the structure and guidelines strictly prescribed by the Bar Council of India (BCI), New Delhi. Apart from the 30 papers prescribed by the BCI, we have introduced 8 more papers such as Intellectual Property Rights (IPR), Cyber Law, Media Law, and Women and Criminal Law, etc. to apprise students about the latest advancements and developments in the field of law.

A host of celebrated judges-9 Supreme Court Judges, including



the then Chief Justice of India, Mr. K. G. Balakrishnan and 20 High Court Judges, have visited the campus to attend various National level Seminars & Moot Court Competitions and interacted with students. Also, Justice R. Banumathi, presently the only woman Judge in the Supreme Court also visited the University and addressed the students. Vice Chancellors of various National Law Universities, Central and State Universities and many legal luminaries visit regularly.

To give practical exposure and inculcate critical sagacity in students, we ensure that they regularly visit the Supreme Court, High Courts and lower courts to observe the atmosphere and ongoing proceedings. Each of the students visits the Supreme Court within a month of joining the college.

Many faculty members as well as the alumni of the college have been selected as judicial officers in various states. The students are being sent to prestigious national and international institutions for internships, with NHRC (New Delhi), Law Commission of India, Indian Law

Institute, New Delhi, RLEK (Dehradun), Desai & Company (Mumbai) etc. Our students have also been selected for internships in London School of Economics, Medico Legal Department of Cambridge University, UK. Besides internships, students are also appointed as volunteers during the legal aid camps organized by the High Court of Rajasthan in different parts of the state. They also work with judges of various courts and other legal institutions to gain substantial experience and wisdom.

The other striking features of the college are Intellectual Property Rights (IPR) Cell, Legal Aid Clinic and Moot Court Society. CLG also publishes an annual law journal to keep the legal fraternity abreast of the recent socio-legal developments and significant judgments, relevant topics, and all the latest happenings within the law fraternity and sphere.

Within a short span of time, CLG has organized several National Seminars, International Conferences, and International & National level Moot-Court Competitions.

COUNSEL PRESENTING THE CASE IN INTERNATIONAL MOOT COURT COMPETITION



DEAN'S PROFILE



Prof. Satish C. Shastri did his LL.M. and Ph. D. from the University of Rajasthan, and MSL in Environmental Law from the Vermont Law School, USA.

Prof. Shastri holds the distinction of being the first Director of the Academy of Legal Studies, Bar Council of India, New Delhi. He has also been the nominee of the UGC as a Member of the Human Rights Education Task Force, National Human Rights Commission, New Delhi.

He has organised more than 15 national conferences and 3 international events. He has visited a lot of national and international law institutions that includes Banaras Hindu University, Indian Law Institute, National Law University of Advanced Legal Studies, Humboldt University (Germany), Singapore University, Environmental Studies Centre (Canada), Dartmouth University (Canada), Salford University

(U.K.) to deliver lectures on various aspects of environmental management.

Recently Prof. Shastri led the Indian delegation to the 'First China-South Asia Legal Conference' which was held at the Yunnan University, Kunming, China. This forum was represented by ten countries that included high level officers and diplomats from Afghanistan, Vietnam, Malaysia, Sri Lanka, Maldives, Nepal, Bangladesh, Pakistan, India and China. Prof. Shastri, a distinguished academician, has authored nine books and many of them are read by students across the world in many reputed universities. He was awarded the first prize under Medini Puraskar for his seminal book 'Dhwani Pradushan' by the Department of Forest and Environment, Government of India. He has also been felicitated by many institutions/ organization for his pioneering work in the field of Environment Conservation.

COLLEGE ACHIEVEMENTS

College of Law and Governance has been selected and conferred with the "Excellent Institutional Award" for maintaining the 'Excellent Standards in Academic and Extension Activities' in India for the year 2016 by the prestigious Society of Indian Law Firms and Menon Institute of Legal Advocacy and Training.

Dean CLG, Prof. Satish C. Shastri holds the distinction of being the First Director of the Academy of Legal Studies, Bar Council of India, New Delhi and has also been the nominee of the University Grants Commission (UGC) as a Member of the Human Rights Education Task Force of the National Human Rights Commission, New Delhi.

Our Students are selected in National Hockey team and State Basketball Team.

CLG has also organized international and national level Moot Court Competitions and various seminars and conferences on contemporary socio-legal issues.

MODY UNIVERSITY 2018-19

PROGRAMMES AT A GLANCE

PROGRAMMES	SUBJECT/ BRANCH	INTAKE	DURATION	ELIGIBILITY
UNDER GRADUATE PROGRAMMES				
B.A. LL.B.	Humanities Papers and All Law Papers	60	Five Years	Min. 50% in 10+2
B. Com. LL.B.	Commerce Papers and All Law Papers	30	Five Years	Min. 50% in 10+2
B.B.A. LL.B.	Management Papers and All Law Papers	30	Five Years	Min. 50% in 10+2
B. Sc. LL.B.	Science Papers and All Law Papers	30	Five Years	Min. 50% in 10+2
LL.B. (Three years)	All Law Papers	60	Three Years	Min. 50% in Graduation
POST GRADUATE PROGRAMMES				
LL.M.	International and Comparative Laws	5	One Year	Min. 50% in LL.B.
LL.M.	Corporate and Commercial Law	5	One Year	Min. 50% in LL.B.
LL.M.	Criminal and Security Law	5	One Year	Min. 50% in LL.B.
RESEARCH				
Ph. D.	In all areas of Law	5	Minimum 2 years	Min. 55% in LL. M.

PAPER PRESENTATION IN NATIONAL SEMINAR



PROGRAMMES OFFERED

ADDRESS BY HON'BLE JUSTICE R. BANUMATHI, JUDGE, SUPREME COURT OF INDIA



FIVE-YEAR INTEGRATED PROGRAMME

B.A. LL.B.
B. Com. LL.B.
B.B.A. LL.B.
B. Sc. LL.B.

THREE-YEAR LL.B. PROGRAMME

ONE-YEAR LL.M. PROGRAMME

International and Comparative Law
Corporate and Commercial Law
Criminal and Security Law

Ph. D. IN ALL AREAS OF LAW

MODY UNIVERSITY 2018-19

PARTICIPATION OF INTERNATIONAL STUDENT IN MOOT COURT COMPETITION



RESOURCES



LIBRARY

The top-of-the-line, CLG library is a repository of an array of books on law. It includes prestigious and case digests, journals like Halsbury's Laws of England, Halsbury's Laws of India, Harvard Law Review (since 1887), Yale Law Journal, the rare set of All England Reporter, Privy Council Judgments (1887 to 1950) and various other Legal Treaties by renowned authors.

The library also possesses the Reports of Law Commission of India (28 volumes), Rajasthan Local Laws (45 volumes), Encyclopedia of Central Acts (22 volumes), Encyclopedia of Statutes Rules and Regulations of Central Acts (35 volumes), full set of Indian Bar Review, Annual Survey of

Indian Law since 1965, Framing of the Indian Constitution (5 volumes), and Moore's Indian Appeal & Indian Appeals (1837 to 1950).

COMPUTER LAB

The state-of-the-art computer laboratory with 24-hour Internet is also available to students so that they can access 'Online Database Multi-User (Manupatra)' which contains statutes, rules, regulations, judgments of the Privy Council, High Courts, the Supreme Court, and latest information/ news about the developments in the socio-legal field at the national and international level.

LIFE BEYOND CLASSROOM

FELICITATION OF MS. PREETA
DHANKAR BY HON'BLE CHANCELLOR
AS BEST SPEAKER IN INTERNATIONAL
MOOT COURT COMPETITION



DEAN, CLG GIVING AWAY THE TROPHY



MARCH PAST TROPHY WON BY CLG



CAREER DEVELOPMENT CENTRE

KNOWLEDGE DOES NOT
COME WITH AGE, IT
COMES WITH YOUR
PURSUIT OF EXCELLENCE.
-KITTY RAWR

The Career Development Centre (CDC) is an interface between the industry and academia at Mody University to streamline the placement process for students and serves the community at large by grooming students to become highly efficient and competent professionals and qualified citizens.

A team of committed and qualified professionals at CDC guides students to choose the best career option for them on the basis of their bent of mind, flair, dexterity, and qualification. It assists students in identifying and developing their academic and career interests, and to set their short-term and long-term goals through individual counseling and group sessions.



MESSAGE



Mr. SUDHANSHU K. SINHA

We are an ardent believer in spirit-de-corps and we prefer to work as a team, always trying for the growth and development of the team in particular and the organization in general.

Having an inherent desire for institution building and aspiring to become a growth facilitator and a career builder, it has been a matter of great pleasure to be associated with a professionally run organization like Mody University where the potential for the same could be optimally utilized.

Being the founder Head of Career Development Centre and Training and Placement facilities of the University, it's a matter of pride and privilege to say that it has been more than a decade old relationship with Mody University, which has only grown with time.

We have a young team of energetic people at CDC who work round the clock in 24×7 manner and leave no stone unturned for the betterment of the students of the University.

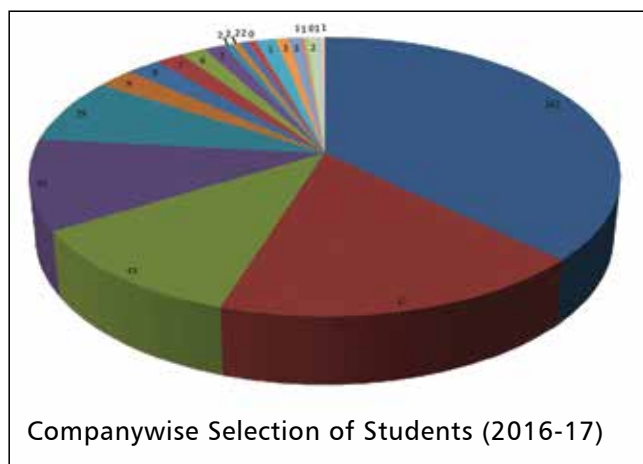
Through CDC we have signed a number of MoUs with industry leaders like Microsoft, Oracle, Accenture, IBM, Infosys, Syntel, Wipro, Ericsson, etc. and have set up a variety of laboratories to create an ambience of the Industry and to provide hands-on experience to our students on the latest developments and technologies.

Within a short span of time we have achieved over 95% placement of eligible and interested students in reputed companies like L&T, Hewlett Packard, Samsung, GE, Godrej, IFB, Wipro, Axis Bank, HDFC Bank, Accenture, Infosys, IBM, Ericsson, TCS, Tech Mahindra, Huawei, Amazon, Oracle, Honeywell, etc. and they have been recruiting our students in double and triple figures.

We are committed to strive hard and smart to achieve new heights every day and to unfold new avenues of career opportunities for the larger benefit of our students.



EXCELLENT PLACEMENT RECORDS



COLLEGE OF ENGINEERING AND TECHNOLOGY

- Accenture
- Capgemini
- Ericsson
- Infosys
- IBM
- Honeywell
- Bhasin Group
- JSR Technologies
- Ayat Softech
- John Deere
- Oracle
- Mahindra & Mahindra
- SGL Infosolutions
- Goldmine Real Estate
- Amazon
- SKF Bearing
- TCS
- SAP Labs
- HSBC Banks
- Bosch, and many more

PACKAGE OFFERED (IN Rs.)	
AVERAGE	MAXIMUM
4.50 LPA	18.0 LPA

COLLEGE OF BUSINESS MANAGEMENT, ECONOMICS AND COMMERCE

- SGL Infosolutions
- Bhasin Group
- AU Small Finance Bank
- Jaro Education
- Birla Sunlife
- ICICI Securities
- S & P Global
- Axis Bank
- Karvy Stock Broking Ltd. etc.

COLLEGE OF LAW AND GOVERNANCE

- Zenith Lex
- Quislex, etc.

COLLEGE OF FASHION DESIGN AND MERCHANDISING

- Re-do Fashion Magazine, etc.

HIGHLIGHTS

- Multiple Job Offers
- In terms of Recruitment-One of the Highest Conversion ratio in India
- Major Industry Giants are regular Recruiters
- Almost 100% placement of the eligible and interested students
- National and Off-shore Internship with Stipend
- Pre-Placement Offers (after Internship)
- Recruitment by several Top MNCs for last 10 consecutive years without any break

INSTITUTE INDUSTRY INTERFACE

To match the pace with the Industry and to know the current trends therein, Mody University moves hand-in-hand with them. At the University campus, in order to facilitate the learning process of students, several Innovation Centres have been set up in collaboration with top-flight companies.

The high-flying professionals from diverse fields visit the campus throughout the year to interact with students and share their industry experience. The industry interaction is a gateway to imbibe pearls of wisdom from the seasoned and acclaimed stalwarts.

MoUs SIGNED WITH

- Accenture
- Infosys
- Ericsson
- IBM

PROMINENT INDUSTRY INITIATIVES

- Infosys Campus Connect
- Ericsson Empower Programme
- IBM Course Electives
- Accenture Online Programme
- Industry Electives
- Industry Faculty Development Programmes
- Students' Certification Programmes
- Webinars and Online Education Programmes

INDUSTRY SPONSORED LABORATORIES

- Accenture Innovation Centre
- IBM Specialty Laboratory



FINISHING SCHOOL CONCEPT

The University firmly believes that its bright students chart their own career graph; CDC is just a facilitator acting as a bridge between top-notch companies and students.

The exquisite placement record is an empirical testament to our academic brilliance, critical evaluation systems, and quality of students.

To make students 'Industry Ready' and to expand the 'Repertoire of Skills', CDC managed to bag a number of Industry Sponsored Laboratories for the University, in collaboration with industry giants. Also, to move hand-in-hand with the pace of industry, MoUs have also been signed in several areas with the major players of different domains.

OVERALL DEVELOPMENT TRAINING

- In-House training team for soft skills and technical skills from a basic to advance level
- Regular and periodic in-house and third party assessments through agencies of national repute
- Regular counselling sessions
- Regular mock sessions
- Personalized multi-layered assessments and training
- Industry Internships

ALUMNI SPEAKS



"Mody University laid the foundation of whatever I have achieved today. In my opinion, it's a classic example of empowering women both personally and technologically.

I would consider myself blessed if I do get a chance to contribute in the success of the students at Mody University."

Reshma Dokani
Batch: 2005-2009
Microsoft



"Every single experience at girls University teaches one a lot; whether it is academics, inter/ intra college fests, college committees, etc. every experience has bettered my personality.

The state of the art infrastructure and the proficiency courses are something that always makes an alumni proud of.

The subject knowledge given by teachers is still a strong base in my industry experience; I am privileged to be a part of Mody University and would always recommend it to everyone."

Purna Choudhary
Batch: 2007-2011
Accenture



"The institution instilled in me the grounds of knowledge because of which I am Capable to pursue my post graduation.

MUST is a vision for imparting knowledge. With its supportive faculty and secured environment, it is one University that works towards benefiting its students in every field. I was transformed into a better and knowledgeable person."

Shivani Pathak Patel
Batch: 2010-2012
TCS

ALUMNI ASSOCIATION

The relationship between an educational institution and its Alumni Association is symbiotic. A person's Alma Mater plays a significant role in shaping a person's knowledge, skills and attitude. It serves as a launching pad for a person stepping into adulthood. Mody University has played this role significantly in the lives of thousands of students and will continue to do so for years to come. And, when the students do step into the world, they become brand ambassadors for the University.

Alumni are the role models of any institution. At Mody University we believe in fostering a strong alumni network that not only helps former students remain connected but also provide an avenue for the philanthropic spirit of successful alumni. The Career Development Centre provides a platform for sharing intellectual, cultural, career and professional experiences not just with the present students but also with other alumni. Our goal in the CDC Office is to enable every student to remain connected with Mody University in order to promote stronger connections and help provide opportunities for dialogue, sharing knowledge, voluntary service, social interaction and philanthropy.

The Alumni of Mody University, a diverse

assemblage of over 5000 engineers, scientists, lawyers, managers, bureaucrats, academicians and entrepreneurs, represent a very significant group of professionals, contributing effectively in their chosen areas of activity. The University firmly believes that every one of our alumnus plays a significant role in helping the University to reach its strategic mission, that of becoming one of the best learning centres of the world.

HIGHLIGHTS

- A Seamless Conduit between Industry and Institute
- Makes Students 'Industry Ready'
- Single window 'Nodal Point' for Career Counseling and Guidance
- A link between University, Students, Alumni and the Employers
- A team of Self-motivated and Goal Oriented Professionals
- Facilitates the Incubation of Ideas for Entrepreneurial Activities



TOP RECRUITERS

- Accenture
- Aditya Birla
- Airtel
- All India Reporter
- Amazon (I) Pvt. Ltd.
- Aon Hewitt
- Aspiring Minds
- Axis Bank
- Bank of Baroda
- BHEL
- Birla Cement Works
- Bluegape
- Bonton Cables
- Bosch
- BP Incorporate
- BSL Ltd.
- Caltex Lubricant
- Capgemini
- Capital Via
- Caritor (I) Pvt. Ltd.
- Ceasefire Pvt. Ltd.
- CGI
- Citi Financial
- Concierge Techonologies
- Convergys
- DCM Shriram
- Deutsche Bank
- Eastern Book Company
- EFI
- Eicher Tractors
- Ericsson
- Fab2U
- Fiserv
- Fortis Escorts
- GAIL
- GE
- Godrej & Boyce
- HCL Technologies
- Hewlett Packard
- Honeywell
- Huawei Tech (I) Pvt. Ltd.
- IBM
- ICICI Bank
- Idea Cellular
- IFB
- India Bulls
- Indorama
- IndusInd Bank
- Infosys Technologies Ltd.
- Jaro Education
- JCT Ltd.
- Jindal Strips Ltd.
- JK Industries Ltd.
- John Deere
- Just Dial
- Kingfisher
- L&T Infotech
- L&T Technology
- Mahindra & Mahindra
- Mahindra Satyam
- Mangalam Cement Ltd.
- Mastek
- Max Newyork Life Insurance
- Mphasis
- Munjal Casting
- Nagarro Software
- National Engineering Industries
- Nestle India Ltd.
- Net Devices
- Nokia Siemens Networks
- Novartis
- Oracle India Pvt. Ltd.
- Patni Computers
- Pfizer
- Punjab National Bank
- Saint Gobain
- Samsung
- SAP Labs
- SKF Bearings
- ETV
- Societe General
- Syntel
- TCS
- Tech Mahindra
- Telenor
- Tommy Hilfiger
- Trident
- UAS International
- Vodafone
- Wipro
- Yes Bank
- Zensar Technologies



GLOBAL CONNECTIONS

DEVELOP A PASSION
FOR LEARNING. IF YOU
DO, YOU WILL NEVER
CEASE TO GROW.
-ANTHONY J. D' ANGELO

To expand the global opportunities to women students, Mody University has established more than 20 international collaborations with renowned foreign universities-Universite de Nantes, (France), Ecole Des Mines de Nantes, (France), Stony Brook University (USA), University of Missouri (USA), University of North Texas (USA) and Florida International University (USA)-to name a few. Many of our students are regularly selected for paid internships and research fellowships by noted foreign institutes.

DIRECTOR'S PROFILE



Prof. R. K. Shivpuri is currently associated as Director, International Relations and Professor at Mody University, Rajasthan. He is also Founder-Director, Centre for Detector and Software Technology, University of Delhi and has been Chairperson, M. Tech. Committee on Nuclear Science and Technology, University of Delhi. Earlier he worked as Distinguished Professor and Senior Advisor at the University of Petroleum and Energy Studies, Dehradun. In the last few years, he has been a moving force in starting the Nuclear Technology Course in several Universities such as University of Delhi, Delhi, Mody University and University of Petroleum & Energy Studies, Dehradun. He has been Principal Investigator of several International Research Projects including Fermilab Dzero Collider Experiment, USA and Search for New Particles at the Large Hadron Collider, CERN, Geneva, Switzerland with total grants over Rs. 15 Crores till now. He has been associated with the two greatest discoveries of particle physics in last fifty years-Top Quark in 1995 and Higgs Boson (God Particle) in 2012. His research area is experimental High Energy and Nuclear Physics.

He started the collaboration of Mody University with several Universities in France, Germany, Switzerland etc. Consequently, several students from Mody University are regularly going to Germany, Switzerland & France. Presently, there are

9 students in France. He worked as an Associate Professor of Physics at Clarkson University, New York, USA, and also as a Post-doctoral Fellow at State University of New York, Buffalo, USA. He has been Visiting Scientist at Fermilab, Chicago, USA, where he worked for three major experiments for over 25 years. He has received research grants for few million dollars from National Science Foundation, Washington, USA. He is currently a Visiting Scientist at European Centre for Nuclear Research (CERN), Geneva, Switzerland.

He is Fellow, National Academy of Sciences (1986), India. He supervised the work of 32 Ph. D. & M. Phil. students. His research work is cited over 53,000 times in International Journals & he served as a Referee for the Physical Review (top International Journal in Physics) for 10 years. He has attended 60 International Conferences. His total number of publications in International refereed journals is 950. He was awarded the highest civilian award of "Commander of Academic Palms" by Govt. of France in 2011. He has Co-authored two books: Physics in Everyday Life (2008) published in USA. He was cited in Asia's Who is Who: 1989. He has been a member of governing Bodies of several Colleges of Delhi University and Member, UGC, SAP Committee for Universities & Member, UGC Team for Plan Grants to some Universities. He is serving as a nominee of the President of India in Central Universities.

Mody University is currently having a collaboration agreement with several International Universities/ Institutions which has provision for faculty and student exchange.

MoU SIGNED WITH

COUNTRY	UNIVERSITY/ INSTITUTIONS
France	Ecole Des Mines de Nantes, Nantes, France*
France	Pass-world (7 Business Schools in France)- Dijon Burgundy School of Business Grenoble Ecole de Management Normandy Business School, Novancia Business School Paris EM Strasbourg Business School Telecom Ecole de Management ESC Pau
France	Hautes Études d'Ingénieur (HEI), Lille, France
France	Group HEI, ISA, ISEN-Lille
France	Universite de Nantes, France
USA	Stony Brook University, USA
USA	University of North Texas, USA
USA	Florida International University, Miami, USA

*We have an agreement for dual degree with Ecole Des Mines de Nantes, France for M. Tech. in Nuclear Science and Technology.

MODY UNIVERSITY IS CURRENTLY INTERACTING WITH THE FOLLOWING PROFESSIONAL INSTITUTIONS FOR EXCHANGE OF STUDENTS

- University of Wisconsin, USA
- Fermi National Accelerator Laboratory, USA
- Purdue University, USA
- Carlton University, Canada
- GSI, Germany
- University of Hamburg, Germany
- The European Organization for Nuclear Research (CERN), Switzerland
- Imperial College, London, UK
- Hong Kong Polytechnic University, Hong Kong

COLLEGE OF ENGINEERING AND TECHNOLOGY

CET has several collaborations with renowned Indian and international universities like University of Nantes (France), Stony Brook University (USA), University of Missouri (USA), Carleton University (Canada) and Florida International University (USA), CEERI (Pilani, India), to name a few with whom Mody University has signed Memorandum of Understanding (MoU) for faculty and student exchange and research programmes. The faculty for Nuclear Science is highly distinguished who have obtained several recognitions. One faculty from Nuclear Science, Prof. R. K. Shivpuri is a Fellow of the National Academy of Sciences, India and was also awarded the Commander of Academic Palms by Govt. of France.

The college enjoys an enviable reputation among the leading companies which visit CET to recruit our students. Some of the prominent recruiters are Amazon, Hewlett Packard, Accenture, Capgemini, Honeywell, L&T Technology, IBM, Infosys, Ericsson, and Tech Mahindra. Apart from these, there are a slew of companies which regularly visit our campus.

CET is ranked as the 'Top Engineering College of Excellence' in the GHRDC-CSR survey.

COLLEGE OF ARTS, SCIENCE AND HUMANITIES

CASH is a vibrant college with a global outlook. International conferences and seminars are regularly organized and attended by the faculties of CASH. CASH has collaborated with the universities like University of Michigan, Ann Arbor, USA, University of Rosario, Colombia & Universidad Nacional de Tucuman, Argentina.

RECENT INTERNATIONAL PROJECTS

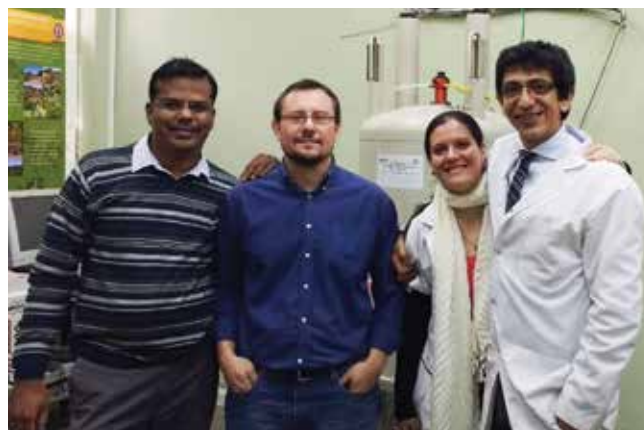
Indo-Argentina International Science and Technology Cooperation Joint Research: The joint research project between Dr. K. L. Ameta of CASH, Mody University and Prof. Adriana Neske of UNT Argentina, for the research on the medicinally important natural as well as synthesized heterocyclic systems is currently

MODY UNIVERSITY 2018-19

going on with active support from Ministry of Science, Technology and productive Innovation, Govt. of Argentina and Department of Science and Technology, Govt. India as a part of India-Argentina bilateral scientific and technological cooperation.

Indo-Bulgarian Inter-Governmental Programme of Cooperation in Science and Technology: is supported by Department of Biotechnology, New Delhi, India. The Principal Investigator Dr. R. K. Gaur (India Side) and Prof. Antony Stoev (Bulgaria side) are working to develop efficient techniques for controlling the Potyvirus diseases based on iRNAi and induction of host defence mechanisms against the viruses.

Dr. R. K. Gaur is a Fellow of the Royal Society of Biology, London.



THE ADVANTAGES OF THE INTERNATIONAL INTERNSHIP PROGRAMME ARE

- Students get exposure to state-of-the art facilities
- They develop cross-culture skills and sensitivity
- They get motivated to go for Masters programme
- They learn to become independent
- Global experience boosts their confidence
- Exposure to foreign University environs enlarges the vision of students
- This experience adds value to student's CV

INTERNATIONAL INTERNSHIPS-2017

Mody University is the first Women University which is having International Collaboration with France, Germany, USA, Canada and Switzerland. This year we have sent 12 students abroad for internships in various disciplines.

FRANCE



NAME OF THE STUDENTS

Aanchal Agarwal, Sakshi Srivastava, Shradha Sharma & Ekta Yadav

UNIVERSITY/ INSTITUTION

Polytech Nantes, Universite de Nantes, France

BRANCH

B. Tech. ECE



NAME OF THE STUDENT

Keerti Gurjar

UNIVERSITY/ INSTITUTION

Polytech Nantes, Universite de Nantes, France

BRANCH

B. Tech. ME



NAME OF THE STUDENT

Anukriti Srivastava

UNIVERSITY/ INSTITUTION

Polytech Nantes, Universite de Nantes, France

BRANCH

B. Tech. CSE

GERMANY



NAME OF THE STUDENTS

Vandana Sharma, Arunima Thapa & Nishita Singh Parmar

UNIVERSITY/ INSTITUTION

Karlsruhe Institute of Technology (KIT), Germany

BRANCH

B. Tech. CSE, B. Tech. ECE



NAME OF THE STUDENTS

Jayati Vijaywargiya & Anushka Tibrewal

UNIVERSITY/ INSTITUTION

GSI, Germany

BRANCH

B. Tech. CSE



NAME OF THE STUDENT

Charul Rathore

UNIVERSITY/ INSTITUTION

GSI, Germany

BRANCH

B. Tech. CSE

INTERNATIONAL INTERSHIPS-2016

THE UNITED STATES OF AMERICA



NAME OF THE STUDENTS

Khushboo Khandal, Charu Sharma,
Rachna Pathak & Kajal Jain

UNIVERSITY/ INSTITUTION

Texas A&M University, George Bush Library and Museum, Disaster City, NASA Space Center, Sandia National Laboratories, National Museum of Nuclear Science and History, Oak Ridge National Laboratory, INMM, Georgia USA.

BRANCH

M. Tech. Nuclear Science & Technology



NAME OF THE STUDENTS

Kaushalya Bishnoi & Radhika Khandelwal

UNIVERSITY/ INSTITUTION

North Texas University, USA

BRANCH

B. Tech. CSE and B. Tech. EEE

SWITZERLAND



NAME OF THE STUDENT

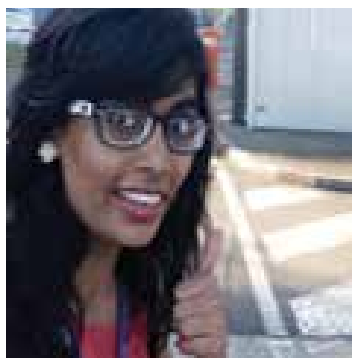
Ayushi Jain

UNIVERSITY/ INSTITUTION

CERN, Switzerland

BRANCH

B. Tech. CSE



NAME OF THE STUDENTS

Bhavita Modi & Shivika Chhabra

UNIVERSITY/ INSTITUTION

CERN, Switzerland

BRANCH

B. Tech. ECE

FRANCE



NAME OF THE STUDENTS

Rajshri Totla, Aratrika Guin, Perna Krishnatriya, Purwa Agarwal, Astha Bansal & Shavika Rastogi

UNIVERSITY/ INSTITUTION

Polytech Nantes, Universite de Nantes, France

BRANCH

B. Tech. ECE and B. Tech. CSE



NAME OF THE STUDENTS

Samridhi Nindrajog, Sakshi Goyal, Tanya Gupta & Sakshi Singhania

UNIVERSITY/ INSTITUTION

HEI Lille

BRANCH

B. Tech. CSE , B. Tech. EEE and B. Com.



NAME OF THE STUDENTS

Tunisha Gupta & Tanushree Jain

UNIVERSITY/ INSTITUTION

Ecole Des Mines de Nantes, France

BRANCH

B. Tech. CSE

INTERNATIONAL STUDENTS

NAME OF THE STUDENT

Ms. A. Deprecq

UNIVERSITY/ INSTITUTION

Ecole Des Mines de Nantes, France

BRANCH

Masters in Energy System Eng. Renewable Energy Sector

INTERNSHIP TOPIC

Design, Control, Simulation & Analysis of different models of Robotic System using interface with hardware & software.

SUPERVISOR

Dr. Sudhir Y. Kumar, Associate Professor and Head, Electrical Engineering

NAME OF THE STUDENT

Ms. M. Foissy

UNIVERSITY/ INSTITUTION

Ecole Des Mines de Nantes, France

BRANCH

Masters in Nuclear Technologies for Security and Environment

INTERNSHIP TOPIC

Si Detector Technology for Nuclear Interactions

SUPERVISOR

Prof. R. K. Shivpuri

FACULTY EXCHANGE

**NAME OF THE FACULTY**

Prof. Abdelouas

UNIVERSITY/ INSTITUTION

Ecole Des Mines de Nantes

BRANCH

Radiochemistry and nuclear materials at the Graduate School of Engineering- Mines Nantes, France and Director of the International Nuclear Master Programme "Sustainable Nuclear Engineering: Applications & Management" -SNEAM.

**NAME OF THE FACULTY**

Prof. Athula Kulatunga

UNIVERSITY/ INSTITUTION

Purdue University Northwest, USA

BRANCH

Head of Engineering Technology Department

**NAME OF THE FACULTY**

Prof. Neeti Prashar

UNIVERSITY/ INSTITUTION

Purdue University Northwest, USA

BRANCH

Physics

**NAME OF THE FACULTY**

Mr. Christian Guellerin, Executive Director, LEDNA

UNIVERSITY/ INSTITUTION

L'Ecole De Design Nantes Atlantique Nantes, France

BRANCH

Product Design, Graphic Design, Space/ Interior Design, Interaction Design, Fashion Design & Merchandising, Architecture Design

OUR EMINENT FACULTY

NAME	QUALIFICATIONS	DESIGNATION
Dr. A. Senthil	Ph. D. (CSE)	Assistant Professor
Ms. Aditi	M. Sc., NET	Lecturer
Mrs. Aditi Kajala	M. Tech. (CSE)	Assistant Professor
Mr. Ajay Kumar	M. Tech. (CSE)	Assistant Professor
Dr. Ajay Kumar Singh	Ph. D. (CSE)	Assistant Professor
Mr. Ajay Panghal	B. Arch., M. Plan.	Assistant Professor
Dr. Ajay Verma	Ph. D., M. Com.	Assistant Professor
Dr. Ajit Mangar	Ph. D., M. Arch., Diploma in Architecture (CEPT)	Professor
Ms. Akanksha Kaw	MBA, B. Tech.	Lecturer
Mr. Aman Jeet	M.A. (German)	Lecturer
Mr. Amit Srivastava	M.A. (French)	Lecturer
Dr. Amlan Kumar Das	Ph. D., PDF	Professor
Dr. Amod Kumar Tiwari	Ph. D.	Assistant Professor
Dr. Amrita Narula	Ph. D.	Assistant Professor
Dr. Anand Sharma	Ph. D. (IT)	Assistant Professor
Mr. Aneesh Lata	B.E. (Civil)	Lecturer
Dr. Anil Kumar	Ph. D. (CSE)	Professor
Dr. Anjali Sharma	M. Com., Ph. D.	Assistant Professor
Dr. Arvind Maharshi	Ph. D.	Associate Professor
Dr. Ashish K. Sharma	Ph. D., MBA, M. Sc., NET	Assistant Professor
Dr. Ashok Singh Rao	Ph. D.	Associate Professor
Mr. Ashok Singh Rathore	M.A., JLPT (Level 3)	Lecturer
Dr. Ashwini Kelkar	Ph. D.	Assistant Professor
Mr. Atul Kumar	M. Tech. (ME)	Assistant Professor
Dr. Atul Kumar	Ph. D., PDF	Professor & Dean
Dr. Bhanwar Singh Rathore	Ph. D., MBA	Associate Professor
Dr. Brajraj Singh	Ph. D.	Associate Professor
Dr. D. Suresh Kumar	Ph. D., M. Phil., M. Com.	Assistant Professor
Ms. Deeksha Sharma	LL.M., NET-JRF	Assistant Professor
Mr. Deepak Khandelwal	Masters (Fine Arts), PGCHE	Assistant Professor
Mr. Deepak Sethi	M. Tech. (CSE)	Assistant Professor
Dr. Dhiresk Kulshrestha	Ph. D., M.A.	Associate Professor
Dr. Divya Mathur	Ph. D., MBA, NET	Assistant Professor
Dr. Durgesh Kumar Agrawal	Ph. D., MBA	Professor & Dean
Mr. G. Divya Deepak	M. Tech. (Nuclear & Mechanical Engg.)	Assistant Professor
Dr. Garima Sharma	Ph. D.	Assistant Professor
Mr. Gaurav Dhiman	M. Tech. (VLSI Design)	Assistant Professor

Dr. Harish Kumar	Ph. D.	Assistant Professor
Dr. Harlal Singh	Ph. D. (Inorganic Chemistry)	Associate Professor
Dr. Harshita Sachdeva	Ph. D.	Associate Professor
Dr. Heenakshi Bhansali	Ph. D.	Assistant Professor
Mr. Hitesh Jangir	M.S. (CSE)	Assistant Professor
Mrs. Jeetu Sharma	M. Tech. (Micro Electronics & VLSI)	Assistant Professor
Dr. Jitendra Binwal	Ph. D.	Associate Professor
Ms. Jyoti Pal	Masters in Design (Apparel Design)	Sr. Lecturer
Dr. K.L. Ameta	Ph. D.	Associate Professor
Dr. Kalpana Sharma	LL.M., Ph. D., P.G. Diploma (PM&LW)	Assistant Professor
Dr. Kanti Prakash Sharma	Ph. D.	Assistant Professor
Mr. Kaushik Ghosh	M. Tech. (Computer Technology)	Assistant Professor
Ms. Kavita Dhanuka	B. Arch., M. Arch.	Assistant Professor
Dr. Khushboo Gupta	Ph. D.	Assistant Professor
Ms. Kiran Tiwari	MBA, NET	Assistant Professor
Dr. Kumar Sambhav Pareek	Ph. D.	Assistant Professor
Dr. Kusum Sharma	Ph. D.	Assistant Professor
Dr. M. Venu Gopala Rao	Ph. D. (ME)	Professor & Vice President
Mr. Mahesh K. Choudhary	B. Arch., M. Arch.	Assistant Professor
Dr. Mahesh Sharma	Ph. D.	Assistant Professor
Dr. Manish Didwania	Ph. D., M. Com., MBA, NET	Associate Professor
Mr. Manish Kumar	M. Tech. (Nuclear Engg.)	Assistant Professor
Mr. Manmohan Sharma	M.E. (Software Engg.)	Assistant Professor
Dr. Manoj Mishra	Ph. D.	Assistant Professor
Dr. Mohit Soni	Ph. D.	Assistant Professor
Ms. Moumita Ghosh	M. Tech. (Computer Technology)	Assistant Professor
Mr. Mukul Kant Paliwal	M. Tech. (Mechanical Engg.)	Assistant Professor
Dr. N. K. Joshi	Ph. D. (Plasma Physics)	Professor
Mr. N. S. Baruaole	M. Tech. (Design & Production Engg. Power Plant Machinery Thermal)	Assistant Professor
Dr. Narendra Kumar	Ph. D.	Assistant Professor
Ms. Navna Singh	B.B.A.LL.B., LL.M., NET	Assistant Professor
Dr. Navneet Joshi	Ph. D.	Assistant Professor
Dr. Neelam Chaudhary	LL.M., P.G.D.LL., Ph. D., NET, SET	Assistant Professor
Ms. Neelam Srivastava	MBA (Fashion Retail), M.A., PGD (Apparel Production)	Assistant Professor
Dr. Neema Papnai	Ph. D.	Assistant Professor
Ms. Neha Khurana	B.A.LL.B., LL.M., NET	Assistant Professor
Mr. Niranjana Lal	M. Tech. (IT)	Assistant Professor
Mr. Nisheeth Saxena	M. Tech. (CSE)	Assistant Professor

Dr. Nitin Kishore Saxena	Ph. D., M. Com.	Assistant Professor
Mr. P. K. Bishnoi	M. Tech. (CSE)	Assistant Professor
Dr. Partha Pratim Bhattacharya	Ph. D. (ECE)	Professor
Dr. Parul Pareek	LL.M., Ph. D., NET, SET	Assistant Professor
Mr. Pinaki Ghosh	M. Tech. (CSE)	Assistant Professor
Dr. Poonam Sharma	Ph. D.	Lecturer
Dr. Pradeep Kautish	Ph. D., MBA, NET	Associate Professor
Mr. Prakash Kumar Soni	B.A. LL.B., LL.M., NET	Assistant Professor
Mr. Pramod Kumar Bhatt	M. Tech. (Power Electronics)	Assistant Professor
Dr. Prateek Bhanti	Ph. D. (CS)	Assistant Professor
Mr. Pratik Patel	B. Arch., M. Plan.	Associate Professor
Ms. Pratima Bhattacharjee	M. Sc. (Interior Design)	Professor
Dr. Priti Vyas	Ph. D.	Lecturer
Ms. Priya Purohit	B.A.LL.B., LL.M., NET, CS Professional	Assistant Professor
Ms. Priyanka Dahiya	M. Tech. (CSE)	Sr. Lecturer
Dr. Priyanka Jain	Ph. D., MBA, M. Sc., SET	Assistant Professor
Dr. Puneet Kumar	Ph. D. (CS)	Assistant Professor
Ms. Purnima Sharma	M. Tech. (VLSI Design)	Assistant Professor
Dr. R.S. Chundawat	Ph. D.	Assistant Professor
Dr. R.S. Solanki	D.L.L., LL.M., Ph. D.	Assistant Professor
Mr. Rahul Soni	B.B.A.LL.B., LL.M., NET	Assistant Professor
Dr. Rajarshi Kumar Gaur	Ph. D., PDF	Professor
Mr. Rajeev Kumar Singh	M.A., MBA	Lecturer
Dr. Rajeev Pourush	Ph. D. (Microwave Engg.)	Assistant Professor
Dr. Rajesh Sharma	Ph. D., M. Phil., M.A., B. Ed., NET	Assistant Professor
Mr. Rajesh Yadav	M. Tech. (IT)	Lecturer
Dr. Rajiv Kumar Mishra	Ph. D.	Assistant Professor
Dr. Rakhee Chaudhary	Ph. D.	Associate Professor
Dr. Ramesh Chandra Nayak	Ph. D.	Assistant Professor
Ms. Ranjana Thalore	M. Tech. (Signal Processing)	Assistant Professor
Mr. Rishi Kumar	M.A., M. Phil., NET	Assistant Professor
Ms. Ritu Tak	M. Tech. (Power Systems)	Assistant Professor
Mr. Rohit Kumar	B. Arch.	Assistant Professor
Mr. S. S. Verma	M. Tech. (CSE)	Assistant Professor
Dr. S. K. Vasistha	Ph. D.	Associate Professor
Dr. S.S. Chauhan	Ph. D.	Assistant Professor
Dr. Sandeep Jaiswal	Ph. D. (Biomedical Engg.)	Assistant Professor
Dr. Sandip Bag	Ph. D. (Biomedical Engg.)	Associate Professor
Ms. Sangeeta Jakhar	B.B.A.LL.B., LL.M., NET	Assistant Professor
Dr. Sangeeta Jhaharia	Ph. D.	Assistant Professor
Dr. Sanjeev Patwa	Ph. D. (CS)	Assistant Professor

Dr. Sarika Mohata	Ph. D.	Assistant Professor
Dr. Sarita Khaturia	Ph. D.	Assistant Professor
Dr. Satish C. Shastri	LL.M., Ph. D., M.S.L. (U.S.A.)	Professor & Dean
Mr. Satyajit Anand	M. Tech. (VLSI Design)	Assistant Professor
Mr. Saurabh Chatterjee	M.A. (Chinese)	Lecturer
Mr. Saurabh Verma	B.F.A., M.F.A.	Lecturer
Ms. Shally	M. Tech. (CS)	Assistant Professor
Mr. Shivam Pandey	M. Tech. (CSE)	Assistant Professor
Ms. Shreya Giri	B. Arch., M. Plan.	Assistant Professor
Ms. Shruti Suman	M. Tech. (VLSI Design)	Assistant Professor
Ms. Shweta Iyer	B. Tech. (Apparel Production)	Lecturer
Mr. Siddharth Singh Jadon	B. Arch., M. Arch.	Assistant Professor
Dr. S.K. Vasistha	Ph. D. (CSE)	Associate Professor
Mr. Somil Jain	M. Tech. (CSE)	Lecturer
Ms. Srishti Singh	M.A., NET	Lecturer
Dr. Sudhir Y. Kumar	Ph. D. (Electrical Engg.)	Associate Professor
Ms. Sukriti Khatri	CA, M. Com., NET	Lecturer
Mr. Sumit Kulshrestha	MBA, NET	Assistant Professor
Mr. Suneet Gupta	M. Tech. (Computer Application)	Assistant Professor
Ms. Suneetha Rikhari	M. Tech. (Systems & Signal Processing)	Assistant Professor
Ms. Sunita Kumari	M. Tech. (Power Systems)	Assistant Professor
Dr. Sunita Verma	Ph. D., MBA, M.A.	Assistant Professor
Dr. Suresh Advani	Ph. D.	Professor & President
Mr. Tarun Grover	M. Tech. (Textile Science)	Assistant Professor
Dr. Taruna Suthar	Ph. D.	Lecturer
Dr. Tathagata Ghosh	Ph. D.	Lecturer
Mr. Thoudam Paraskumar Singh	M. Tech. (Power Systems)	Assistant Professor
Mr. Tushar Gupta	B.A. (Hons.)-Fashion Design	CAD Coordinator
Mr. Ulhas Vinay	M. Sc., NET	Sr. Lecturer
Dr. Uma Kumari	Ph. D. (CSE)	Assistant Professor
Mrs. Uma Nirmal	M. Tech. (VLSI Design)	Assistant Professor
Dr. V. K. Jain	Ph. D. (CSE)	Professor & Dean
Ms. Vandana Mehra	M.A. (French)	Lecturer
Dr. Vijay Kumar Vyas	Ph. D.	Assistant Professor
Mr. Vikas Raina	M. Tech. (Micro Electronics & VLSI)	Assistant Professor
Mr. Vikram Sharma	B.B.A.LL.B., LL.M., NET	Assistant Professor
Mr. Vikrant Sharma	M. Tech. (Mfg. System Engg.)	Assistant Professor
Dr. Vinay Kumar Singh	Ph. D.	Assistant Professor
Mr. Vinay Kumar Tiwari	M.A., B2 (Level 2 in German)	Lecturer
Dr. Vinod Maan	Ph. D. (CSE)	Assistant Professor

FEE STRUCTURE 2018-2019 (TABLE-A1)										
(A) APPLICATION FORM WITH PROSPECTUS: Rs. 600										
(B) FEES STRUCTURE (CET+CAD)										
S.N.	Programmes	B. Tech. (4-Year) All branches Except Col. 4&5	B. Tech. 4-Year : CS BDA/ CC (IBM)	B. Tech. 4-Year : CS IOT/ IS (IBM)	BCA. (3-Year)	Integrated (B. Tech. + M.B.A.) (5-Year) & (B. Tech. + M. Tech.) (5-Year)	M. Tech./ M. Plan. (2-Year)	M.C.A. (3-Year)	NRI & Foreign Students # For Prog. of Col. 3 to 9	Ph. D. (CET)
1	2	3	4	5	6	7	8	9	10	11
ONE TIME PAYMENT AT THE TIME OF ADMISSION										
1	Admission Fees	15,000	15,000	15,000	15,000	15,000	15,000	15,000	\$300	15,000
ONE TIME PAYMENT AT THE TIME OF ADMISSION (REFUNDABLE ON LEAVING THE INSTITUTE)										
2	Caution Money	10,000	10,000	10,000	10,000	10,000	10,000	10,000	\$400	10,000
3	Hostel Security - Boarders only	20,000	20,000	20,000	20,000	20,000	20,000	20,000	\$1,000	20,000
YEARLY PAYMENT (IN TWO EQUAL INSTALLMENTS; FIRST AT THE TIME OF ADMISSION AND SECOND BY NOVEMBER 15, 2018)										
4	Tuition Fees	1,45,000	1,85,000	1,85,000	58,000	1,45,000	80,000	80,000	\$5,500	1,05,000
5	Development Fees	50,000	50,000	50,000	50,000	50,000	NIL	NIL	\$1,000	NIL
6	Examination Fees	7,000	7,000	7,000	7,000	7,000	7,000	7,000	\$200	^
7	Career Development Fees	7,000	7,000	7,000	7,000	7,000	7,000	7,000	\$200	NIL
8	Boarding & Lodging-Boarders only									
ACCOUNTABLE PAYMENT										
9	Personal Charges-Boarders	10,000	10,000	10,000	10,000	10,000	10,000	10,000	\$250	10,000
10	Personal Charges-Day Scholars	4,000	4,000	4,000	4,000	4,000	4,000	4,000	\$100	4,000
PAYMENT FOR LANGUAGE COURSES										
11	Foreign Language Course*	4,500	4,500	4,500	4,500	4,500	4,500	4,500	\$135	-
OPTIONAL PAYMENT										
12	Additional Course	4,500	4,500	4,500	4,500	4,500	4,500	4,500	\$135	4,500
13	Equestrian Fees-Day Scholars only	2,400	2,400	2,400	2,400	2,400	2,400	2,400	\$75	2,400
14	Tennis Club Fees-Day Scholars only	2,400	2,400	2,400	2,400	2,400	2,400	2,400	\$75	2,400
Note (1) *To be paid in 2nd year of the U.G./ Integrated programmes; Optional for M. Tech., MCA (2) ^ One time Rs. 35,000 at the time of submission of thesis (3) One-time Alumni Fees Rs. 1,000 will be charged (4) International Internship Processing Fees Rs. 10,000 wherever applicable (5) Tuition Fees Waivers and Scholarships are available, please refer Table-A4 (6) Consolidated Fees Structure for students from North East States of India, please refer Table-C.										

GIVEN SEPARATELY (Please Refer Table-B)

FEE STRUCTURE 2018-2019 [TABLE-A2]									
(A) APPLICATION FORM WITH PROSPECTUS: Rs. 600									
(B) FEES STRUCTURE (COBMEC + CFDM + CAD)									
S.N.	Programmes	M.B.A. (2-Year)	Dual Degree (BBA-MBA) (5-Year)	BFD/ BFM/ BFLAD (4-Year)	MFD/ MFM (2-Year) & P.G. Dip. FM (1-Year)	B. Arch. (5-Year) & BID (4-Year)	NRI & Foreign Students # For Prog. Of Col. 3 to 7	Ph. D. (COBMEC)	Ph. D. (CFDM)
1	2	3	4	5	6	7	8	9	10
ONE TIME PAYMENT AT THE TIME OF ADMISSION									
1	Admission Fees	15,000	15,000	15,000	15,000	15,000	\$300	15,000	15,000
ONE TIME PAYMENT AT THE TIME OF ADMISSION (REFUNDABLE ON LEAVING THE INSTITUTE)									
2	Caution Money	10,000	10,000	10,000	10,000	10,000	\$400	10,000	10,000
3	Hostel Security-Boarders only	20,000	20,000	20,000	20,000	20,000	\$1,000	20,000	20,000
YEARLY PAYMENT (IN TWO EQUAL INSTALLMENTS; FIRST AT THE TIME OF ADMISSION AND SECOND BY NOVEMBER 15, 2018)									
4	Tuition Fees	2,38,000	78,000	120,000	115,000	110,000	\$5,500	75,000	75,000
5	Development Fees	50,000	50,000	50,000	50,000	50,000	\$1,000	NIL	NIL
6	Examination Fees	7,000	7,000	7,000	7,000	7,000	\$200	^	^
	Professional Development Fees	15,000							
7	Boarding & Lodging-Boarders only								
ACCOUNTABLE PAYMENT									
GIVEN SEPARATELY (Please Refer Table-B)									
8	Personal Charges-Boarders	5,000	10,000	10,000	10,000	10,000	\$250	10,000	10,000
9	Personal Charges-Day Scholars	4,000	4,000	4,000	4,000	4,000	\$100	4,000	4,000
PAYMENT FOR LANGUAGE COURSES									
10	Foreign Language Course*	4,500	4,500	4,500	4,500	4,500	\$135	4,500	-
OPTIONAL PAYMENT									
11	Additional Course	4,500	4,500	4,500	4,500	4,500	\$135	4,500	4,500
12	Equestrian Fees-Day Scholars only	2,400	2,400	2,400	2,400	2,400	\$75	2,400	2,400
13	Tennis Club Fees-Day Scholars only	2,400	2,400	2,400	2,400	2,400	\$75	2,400	2,400
Note (1) *To be paid in 2 nd year of the U.G./ Integrated programmes; Optional for M.B.A. (2) ^ One time Rs. 35,000 at the time of submission of thesis (3) One- time Alumni Fees Rs. 1,000 will be charged (4) International Internship Processing Fees Rs. 10,000 wherever applicable (5) Tuition Fees Waivers and Scholarships are available, please refer Table-A4 (6) Consolidated Fees Structure for students from North East States of India and, please refer Table-C.									

FEE STRUCTURE 2018-2019 [TABLE-A3]										
(A) APPLICATION FORM WITH PROSPECTUS: Rs. 600										
(B) FEES STRUCTURE (CLG + CASH + COBMEC)										
S.N.	Programmes	B.A. LL.B. & B. Com. LL.B. (5-Year)	BBA. LL.B. & B. Com. LL.B. (5-Year)	LL.B. (3-Year)	LL.M. (1-Year)	B.A., B.A. (H), B. Com. (H), B. Sc. (H), B. Sc. (3-Year)	BBA (3-Year)	M. Sc., M. Com., M.A. (2-Year)	NRI & Foreign Students # For Prog. of Col. 3 to 9	Ph. D. (CLG, CASH)
1	2	3	4	5	6	7	8	9	10	11
ONE TIME PAYMENT AT THE TIME OF ADMISSION										
1	Admission Fees	15,000	15,000	15,000	15,000	15,000	15,000	15,000	\$300	15,000
ONE TIME PAYMENT AT THE TIME OF ADMISSION (REFUNDABLE ON LEAVING THE INSTITUTE)										
2	Caution Money	10,000	10,000	10,000	10,000	10,000	10,000	10,000	\$400	10,000
3	Hostel Security-Boarders only	20,000	20,000	20,000	20,000	20,000	20,000	20,000	\$1,000	20,000
YEARLY PAYMENT (IN TWO EQUAL INSTALLMENTS; FIRST AT THE TIME OF ADMISSION AND SECOND BY NOVEMBER 15, 2018)										
4	Tuition Fees	68,000	73,000	68,000	60,000	58,000	68,000	58,000	\$3,000	75,000
5	Development Fees	50,000	50,000	50,000	NIL	50,000	50,000	NIL	\$1,000	NIL
6	Examination Fees	7,000	7,000	7,000	7,000	7,000	7,000	7,000	\$200	^
8	Boarding & Lodging-Boarders only									
ACCOUNTABLE PAYMENT										
9	Personal Charges-Boarders	10,000	10,000	10,000	10,000	10,000	10,000	10,000	\$250	10,000
10	Personal Charges-Day Scholars	4,000	4,000	4,000	4,000	4,000	4,000	4,000	\$100	4,000
PAYMENT FOR LANGUAGE COURSES										
11	Foreign Language Course*	4,500	4,500	4,500	4,500	4,500	4,500	4,500	\$135	-
OPTIONAL PAYMENT										
12	Additional Course	4,500	4,500	4,500	4,500	4,500	4,500	4,500	\$135	4,500
13	Equestrian Fees-Day Scholars only	2,400	2,400	2,400	2,400	2,400	2,400	2,400	\$75	2,400
14	Tennis Club Fees-Day Scholars only	2,400	2,400	2,400	2,400	2,400	2,400	2,400	\$75	2,400
Note (1) *To be paid in 2nd year of the U.G./ Integrated programmes; Optional for LL.M. (2) ^ One time Rs. 35,000 at the time of submission of thesis (3) One-time Alumni Fees Rs. 1,000 will be charged (4) International Internship Processing Fees Rs. 10,000 wherever applicable (5) Tuition Fees Waivers and Scholarships are available, please refer Table-A4 (6) Consolidated Fees Structure for students from North East States of India, please refer Table-C.										

GIVEN SEPARATELY (Please Refer Table-B)

SCHOLARSHIP & TUITION FEE WAIVER 2018-2019 [TABLE-A4]					
Category	Scholarships	CET (B. Tech./ Integrated Programme)	COBMEC (MBA)	CASH/ CFDM/ CAD/ COBMEC (UG/BCA)	CLG
A1	100% Tuition Fee waiver*		95% Aggregate or above in CBSE/ State Boards		
A2	100% Tuition Fee waiver*	(a) ≥ 95% marks in PCM/ PCB in class XII or (b) All India General Category Rank up to 1,50,000 for JEE (Mains)-2018 or (c) 25000 for NEET-2018 or (d) MEET rank top 25	(a) ≥ 90% marks in U.G. or (b) 85 percentile in MAT/ NMAT/ CMAT or (c) 75 percentile in CAT/ XAT	≥ 90% in Class XII In best 4 subjects (English+02 core+1 elective)	≥ 90% marks in class XII In best 4 subjects (English+02 core+1 elective)
A3	75% Tuition Fee waiver*		(a) ≥ 85% marks in U.G. or (b) 75 percentile in MAT/ NMAT/ CMAT or (c) 65 percentile in CAT/ XAT		
B	50% Tuition Fee waiver*	(a) ≥ 90% marks in PCM/ PCB in class XII or (b) All India General Category Rank up to 2,50,000 for JEE (Mains)-2018 or (c) 40000 for NEET-2018 or (d) MEET rank top 26 to 40	(a) ≥ 80% marks in U.G. or (b) 70 percentile in MAT/ NMAT/CMAT or (c) 60 percentile in CAT/XAT	≥ 85% in Class XII In best 4 subjects (English+02 core+1 elective)	≥ 85% marks in class XII In best 4 subjects (English+02 core+1 elective)
C	25% Tuition Fee waiver*	(a) ≥ 85% marks in PCM/ PCB in class XII or (b) All India General Category Rank up to 3,00,000 for JEE (Mains)-2018 or (c) 50000 for NEET-2018 or (d) MEET rank top 41 to 50	(a) ≥ 75% marks in U.G. or (b) 65 percentile in MAT/ NMAT/CMAT or (c) 55 percentile in CAT/XAT	≥ 75% marks in U.G. for admission in P.G. ≥ 75% in Class XII In best 4 subjects (English+02 core+1 elective)	≥ 75% marks in class XII In best 4 subjects (English+02 core+1 elective)
D1	10% Tuition Fee waiver for all	More than one sibling (also applicable if one of them is in Mody School).	Tuition fee waiver for all as long as both are studying.		
D2	10% Reduction in boarding & lodging for all #	More than one sibling (also applicable if one of them is in Mody School).	Reductions for all as long as both are studying.		
E1	20% Tuition Fee waiver**	From Mody School to Mody University			
E2	20% Tuition Fee waiver**	U.G. to P.G. at Mody University			
F	25% Tuition Fee waiver**	(a) Children of Defense Personnel (Serving/ Retired/ Deceased) or (b) Participation in National Sports/ National Fine Arts.			

CONDITIONS FOR CONTINUATION OF TUITION FEES WAIVER/ SCHOLARSHIPS IN 2nd YEAR AND ONWARDS:

- a) No backlog
 - b) No disciplinary action and
 - c) CGPA of 8.0 based on average of preceding year*
 - c) CGPA of 7.0 based on average of preceding year**
- Additionally, for F. (b) to continue participation in Sports/ Fine Arts.

Any student falling in category D2 will be eligible for reduction in boarding & lodging charges in addition to Tuition Fees Waiver, as applicable.

CET: College of Engineering and Technology, COBMEC: College of Business Management, Economics and Commerce, CASH: College of Arts, Science and Humanities,

CFDM: College of Fashion Designing and Merchandising, CAD: College of Architecture & Design, CLG: College of Law and Governance.

Note (2): Special scholarship available for International students. Please contact International Admissions Office: 91191 95015

HOSTEL CHARGES - BOARDING & LODGING (TABLE-B) (TO BE PAID IN TWO EQUAL INSTALLMENTS ALONG WITH FEES)

S.No.	Type of Accommodation	Nationals (In INR)	Foreigners/ NRI (In US\$)
1	4 Seater-Non A.C.	1,43,000	2,750
2	4 Seater-A.C.	1,73,000	3,600
3	2 Seater-Non A.C.	1,45,000	2,800
4	2 Seater-A.C.	1,75,000	3,650
5	Single Seater-Non A.C.	1,60,000	3,200
6	Single Seater - A.C.	2,00,000	4,200

Note: Hostel Charges are annual and subject to yearly revision. Hostel charges are charged for one academic year and the students are not allowed to leave the hostel during the academic year. Boarding is vegetarian only.

EDUCATIONAL LOAN

Educational loan is available from State Bank of Bikaner and Jaipur (SBBJ) and Oriental Bank of Commerce (OBC) at concessional rates. The representative of both the banks will be available on the campus at the time of admission.

FOR DETAILS CONTACT-SBBJ: +91 1573 222238 / OBC: +91 1573 225144

SPECIAL CONSIDERATION

Preference will be given in admissions and scholarships to the wards of Armed Forces Personnel (including ex-servicemen) and Decorated Persons.



CONSOLIDATED FEES FOR NORTH EAST STATES OF INDIA (8 SISTER STATES) FOR 2018-19 (TABLE-C)	
5-YEAR PROGRAMMES	1,08,000
(a) Hostel charges for 2-Seater Non-AC per annum	
(b) Academic fees (including Tuition fees, Development fees, Examination fees & one-time Admission fee) per annum	65,000
4-YEAR PROGRAMMES + B. Arch. (5 YEARS)	1,08,000
(a) Hostel charges for 2-Seater Non-AC per annum	
(b) Academic fees (including Tuition fees, Development fees, Examination fees & one-time Admission fee) per annum	80,000
3-YEAR PROGRAMMES	1,08,000
(a) Hostel charges for 2-Seater Non-AC per annum	
(b) Academic fees (including Tuition fees, Development fees, Examination fees & one-time Admission fee) per annum	55,000
2-YEAR M.B.A. PROGRAMME	1,08,000
(a) Hostel charges for 2-Seater Non-AC per annum	
(b) Academic fees (including Tuition fees, Development fees, Examination fees & one-time Admission fee) per annum	1,05,000
2-YEAR M.A./ M. Sc./ M. Com. PROGRAMMES	1,08,000
(a) Hostel charges for 2-Seater Non-AC per annum	
(b) Academic fees (including Tuition fees, Development fees, Examination fees & one-time Admission fee) per annum	40,000
2-YEAR FDM/ 1-YEAR PGFDM PROGRAMME	1,08,000
(a) Hostel charges for 2-Seater Non-AC per annum	
(b) Academic fees (including Tuition fees, Development fees, Examination fees & one-time Admission fee) per annum	80,000
M.C.A. (3 YEAR), M. Tech. (2 YEAR), M. Plan. (2 YEAR) & LL.M. (1 YEAR) PROGRAMME	1,08,000
(a) Hostel charges for 2-Seater Non-AC per annum	
(b) Academic fees (including Tuition fees, Development fees, Examination fees & one-time Admission fee) per annum	55,000

Note:

1. These are consolidated fees and require the student to live on campus as a boarder student; Scholarships of Table-A4 will not be applicable.
2. Apart from above given charges student have to pay Caution Money (Refundable), Hostel Security (Refundable), Personal Charges (Accountable) and Career Development Fees as per their respective courses.
3. Eligibility Criteria for the Students from North East States of India: It is the same as "ISHAN UDAY", the Government of India Scheme for NER Students, as under:

"Students with domicile of North Eastern Region NER who have passed Class XII or equivalent examination from a School situated within NER through any recognized Board of Education, including Central Board of Secondary Education, Indian Certificate of Secondary Education and National Institute of Open Schooling within NER only "



MODY SCHOOL

EXCELLENCE IS NOT
AN EXCEPTION, IT IS A
PREVAILING ATTITUDE.
-COLIN POWELL

Mody School is an English medium all girls residential school committed to the education of the girl child. It is affiliated to CBSE and the International Baccalaureate of Geneva, Switzerland and offers two years IB Diploma Programme.

With the highest standards of academic and administrative efficiency, the school is validated by its ISO 9001:2015 and ISO 14001:2015 certifications, an association with British Council and membership of the prestigious Indian Public Schools' Conference. The School proudly bears the logo of Cambridge English School. It is the first School in Northern India to be certified as Green School Platinum.

It also takes pride in becoming one of the Microsoft Showcase Schools, global members of Round Square network of schools and a YES center of International Award for Young People instituted by the Duke of Edinburgh, London.

The School believes in the aristocracy of service and lays special emphasis on character building. It is inspired by the ancient teaching of SHRIMADBHAGWAD GEETA and inculcates its values in the students, by teaching it to the students of Classes III to VIII.

1st IN RAJASTHAN,
4th IN INDIA

AMONG TOP ALL GIRLS' BOARDING SCHOOLS



PRINCIPAL'S COMMUNIQUE



Ms. MEETA SHARMA

We are firm believers of achieving excellence in our academic, creative, sporting, cultural and social endeavors. We encourage collaborative learning and building positive relationships amongst our girls. At Mody School, we provide the girls an outlet for their growing intellectual and moral powers. The girls are given boundless opportunities to discover their talents and develop a strong sense of responsibility. We value their individuality and celebrate diversity. Our girls make connections with community and are encouraged to serve and develop a heart that never hardens. Along with service, the School also lays great emphasis on character building.

The school provides great opportunities to learn teamwork, fair play, and

sportsmanship to strengthen the virtues of responsibility, perseverance and temperance. Our girls are involved in making and executing plans for projects in school life, so they can put their powers to productive use and thus grow in responsibility. We take them on visits to the differently abled and involve them in teaching catechism, tutoring youngsters worse off than they are, so that they grow in gratitude to God (the basis for all piety), and in generosity.

It is our aim that our girls leave school at ease with themselves, socially aware and ready to face with confidence the challenges of life beyond.

I wish them good luck in all their endeavors.



ACADEMIC AURA

A stimulating curriculum, small class sizes, teachers with passion for their subject and pupils' genuine desire to learn all make up for lively, dynamic and inclusive classrooms.

All classrooms are fitted with digital smart boards to facilitate e-learning and Project-based learning. These engage students in-group oriented projects, providing active instruction in an interdisciplinary array of skills, including Mathematics, Technology, Language, Arts, Fine Arts, Geography, History and Science.

WELL-EQUIPPED LABORATORIES

Students experience hands-on learning in well-stocked and equipped laboratories for Biology, Bio-Technology, Chemistry, Physics, Fashion Studies, Home Science, Computer Science and Language.



These provide a robust platform to our girls allowing them to live up to their imagination; we dare them to dream and give wings to fly.

OUR CURRICULUM

These provide a robust platform to our girls allowing them to live up to their imagination; we dare them to dream and give wings to fly.

INDIAN CURRICULUM

Mody School is affiliated to C.B.S.E, New Delhi. We create effective teaching units according to the syllabus prescribed by it and try to cross subject-matter barriers, which help the students to learn across academic disciplines.

At secondary level students prepare for the All India Secondary School Examination and at senior secondary level students may opt for one of the

three streams Science/ Commerce/ Humanities.

Through rigorous internal assessments and test-series, students are thoroughly trained to take the final examination successfully.

SANSKRIT AND FOREIGN LANGUAGES

Learning Sanskrit is compulsory for the students of Classes III to VI as the school respects and believes in Indian culture and heritage. We inculcate traditional values with a modern outlook, hence learning a foreign language is also compulsory for all students.

We offer an opportunity to learn and gain certificates/ diplomas in French, German, Chinese, and Japanese.

INTERNATIONAL CURRICULUM

The school offers IBDP at Senior Secondary level. Through this programme, we strive harder to produce responsible citizens of our country who think globally.

IB is an academically challenging and balanced programme of education with final examinations that prepares students, aged 16 to 18, for success at University and life beyond. It's a Pre-University programme, which has gained recognition and respect from the world's leading universities. It helps students who also desire to take admission in foreign universities. It prepares them for effective participation in a rapidly evolving and increasingly global society.

An IB Student has to study six subjects from the list of subjects grouped in six categories (one from each group). Along with this, she will have to complete its three core elements (a) Theory of knowledge (TOK) (b) Extended Essay (c) Creativity Action and Services (CAS) for the successful completion of the Diploma. It's a child-centered programme which helps students to develop their innate qualities while learning.



SUBJECTS OFFERED

GROUP 1	GROUP 2	GROUP 3
English A (SL/ HL)	Hindi A (SL/ HL) French	Business & Management (SL/ HL) Economics (SL/ HL) Geography (HL) ITGS
GROUP 4	GROUP 5	GROUP 6
Biology (SL/ HL) Chemistry (SL/ HL) Physics (SL/ HL) Computer Science (SL)	Maths (SL/ HL)	Visual Arts (SL/ HL) HL Film

CELA: CAMBRIDGE ENGLISH LANGUAGE ASSESSMENT

Mody School is also certified as a Cambridge English School which gives our students an opportunity to test their proficiency at English language skills every year through CELA (Cambridge English Language Assessment), a global assessing body of the University of Cambridge, U.K.

ACADEMIC AREA

PASTORAL CARE

Mody School prides itself on ensuring the care and protection of its girls, in the best way possible, balancing lives, both in School and beyond. When we take on a student, we try to understand her background, behavior, strengths, weaknesses and hidden potential. We are committed to drawing out the finest from our children so that they are able to grow into confident young individuals in a complex and dynamic world.

HOSTEL LIFE: THE BEST PHASE OF YOUR LIFE

The hostels are spacious, well-furnished and

equipped with all modern amenities and conveniences. There is uninterrupted hot and cold water supply and power supply. Large common rooms equipped with audio-visual facilities, periodicals, newspapers etc., provide a welcome retreat for the students.

Each hostel is under the care of a resident lady Warden who maintains the academic, medical and personal progress of students. She also acts as an able counselor, guide and administrator, helping her wards to develop firm, meaningful and nurturing relationships. She is assisted by medically trained assistants thereby rendering best of care to the boarders.

Phone and Internet facilities are provided to enable effective communication between parents and students.

THE INFIRMARY: WE CARE FOR YOU

Medical care is available 24x7 on the campus in the presence of two qualified resident lady doctors who are assisted by qualified and trained female nursing staff. The well-equipped infirmary has a separate isolation ward for students suffering from any infectious disease. Proper health records are maintained and parents are kept informed. Also the weekly visit by a dentist ensures dental health of all students.

LIFE BEYOND CLASSROOM



MUSIC AND DANCE AT MODY

Music at Mody School nourishes with opportunities like music making and performance for all age groups. It ranges from choirs, orchestra, bands and smaller ensembles. Individual instrumental and vocal lessons are delivered by highly qualified teachers which help our girls to develop a love for music that lasts for a lifetime.

Dance is very close to our girls' heart. They are taught classical dances by trained Kathak and Bharat Natyam teachers in a well-equipped dance room. This also gives them the opportunity to pursue certificate courses in them. They have been participating in dance competitions at various state and national levels and have brought laurels to the school.



ART AND CRAFT AT MODY

Mody School offers a comprehensive Art theory programme which includes a clutch of courses appropriate to the interdisciplinary studio choices in two-dimensional studies comprising painting, drawing and printmaking, and three-dimensional studies in sculpture, ceramics, pottery and photo-media.

DRAMA AT MODY

Drama at Mody School inspires girls to work creatively, developing confidence, social awareness and communication skills. Our girls are taught to act according to the genre by the teachers specialized in dramatic arts.





SHOULDERING RESPONSIBILITY

Students participation in management activities is encouraged and they are taught to shoulder responsibility by holding various positions in the students' council. These help our girls to develop self-confidence and leadership qualities that are integral to the growth of a successful and empowered woman.

CO-CURRICULAR ACTIVITIES

We lay great emphasis on the all-round development of the children. To achieve this, they are provided opportunities to participate in a number of co-curricular activities like debate, clubs, dance, music, sports, band, etc. Several Inter-House and Inter-School cultural, literary and sports competitions, conducted throughout the year, give them a chance to showcase their unique talents in a variety of ways.

BAND

The Mody School Band is a unique and characteristic feature of our Institute. It synthesizes harmonic development and rhythmic

coordination among children, raising the art of making music to a distinguished level. Skilled bandmasters of Brass Band and Pipe Band impart training to the students on a regular basis.

NCC, NSS AND GUIDES

Regular training in NCC, NSS and Guides is imparted to students and camps are organized from time to time. Mody School NCC Company has regular troops of Junior and Senior Divisions of the Army Wing. Membership to these organizations promotes qualities of comradeship, discipline and leadership that are exceedingly essential for the holistic growth of a child.

REALISING POTENTIAL IN SPORTS

From its very beginning Mody School has understood the importance of physical exercises in the holistic development of young girls. Almost two hours of compulsory exercise both in the morning and evening ensure physical fitness and healthy minds.

Our girls are encouraged to avail the excellent sport facilities available to them like floodlit

Tennis courts, Volleyball courts, Basketball courts, Badminton courts, Cricket Ground, Hockey field.

They are also trained in karate, gymnastics, skating and athletics under the tutelage of experienced coaches and have been winning laurels in several sports disciplines, both at the state and national levels.

Equestrian training is an integral part of our curriculum. This training aims at developing qualities of self-confidence and boldness, besides inculcating a love for animals among students. Equestrian sessions are conducted under expert supervision of specialized riding masters who make our girls skilled at dressage, tent pegging, jumping, reigning, vaulting etc.

YOGA AND MEDITATION

The practice of yoga and meditation assists in the holistic growth of our young girls. It teaches them to be physically and mentally alert besides helping them to adopt the right approach in life.

INTERNATIONALISM

ROUND SQUARE: We are global members of the Round Square and identify with its ideals as they coincide with the core values of the School itself. We encourage our girls to regularly attend various Conferences in India and abroad.

MODEL UNITED NATIONS: Model UN helps

our girls to acquire a number of social and communicative skills that adds tremendously to their personal growth. Our girls have been participating in various MUNs at National and International levels. Mody School played host to the first MUN in the month of September.

INTERNATIONAL AWARD FOR YOUNG PEOPLE (IAYP): We take pride in calling ourselves a YES centre of International Award for Young People (IAYP), instituted by the Duke of Edinburgh, London. It is the most adaptable and successful youth empowerment programme without any religious, political or strategic affiliations. It allows our young girls to develop values like commitment, perseverance, honesty, service to community, etc.

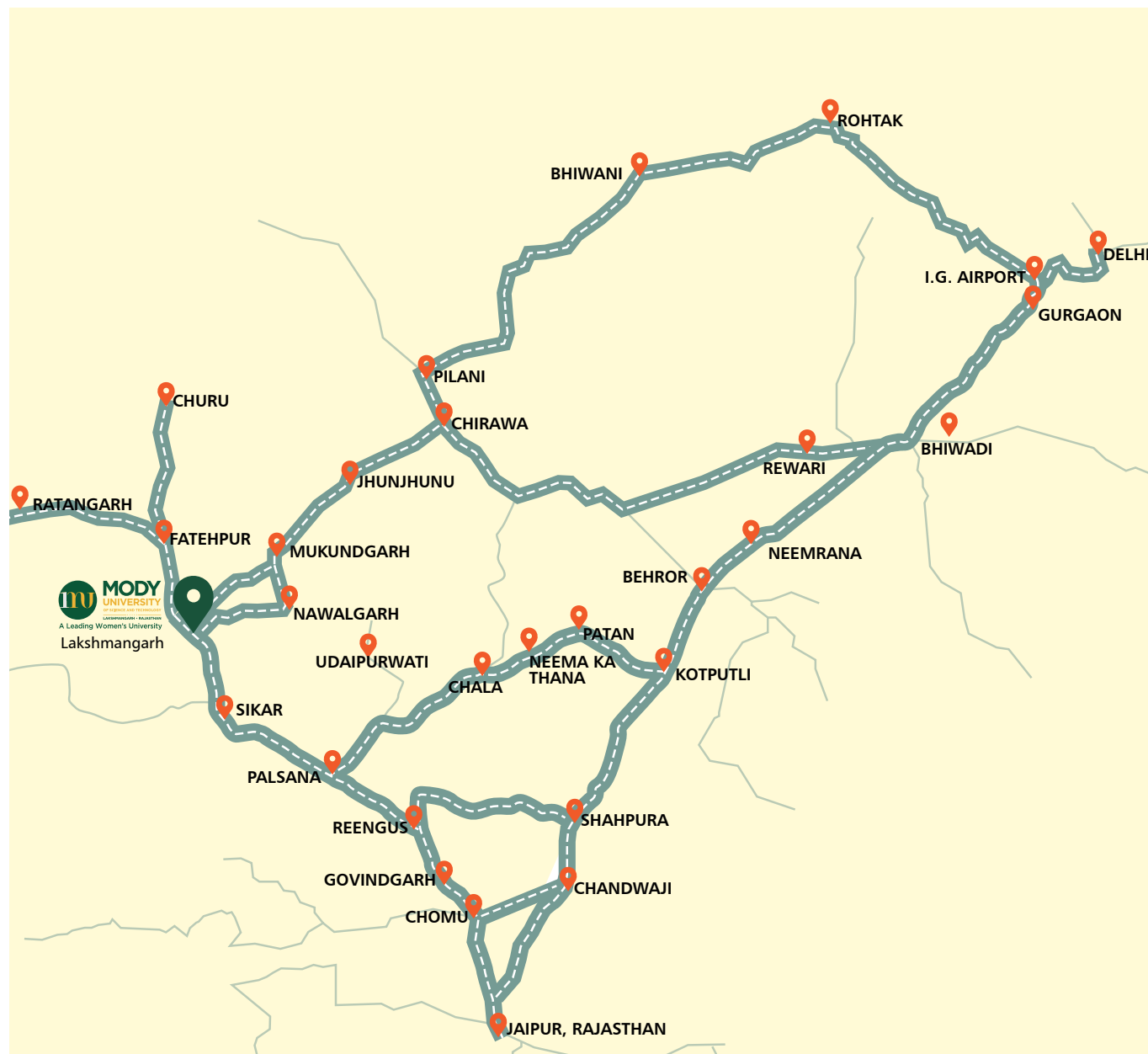
BRITISH COUNCIL: The School is a member of the British Council. Our active involvement with the ISA processes provides varied opportunities in self-development through personal inquiry, in-depth research and development of team spirit to the students, enabling them to acquire organizing abilities and express creatively their oratory skills and leadership qualities.

GLOBAL TRIPS: Various national and international trips are organized every year, which give enormous exposure to, not only academic events, but also those of a cultural and sporting nature. So far, our girls have visited London, Denmark, Switzerland, France, Germany, Singapore and Dubai.



HOW TO REACH LAKSHMANGARH

Rajasthan is famous for its forts, carved temples and decorated havelis. Shekhawati region is famous for its painted Havelis known for their frescoes. Within an hour's drive lie several picturesque towns like Fatehpur, Nawalgarh, Mandawa, and Churu. The University town of Lakshmangarh is situated in the Shekhawati region of Rajasthan. It is located on NH 52 (Old NH 11) about 20 minutes drive from the District town of Sikar and 2 hours drive from Jaipur. The University town of Lakshmangarh is only 30 minutes drive from the revered Salasar Balaji Temple.



DISTANCES BY ROAD

Sikar-27 Km	Udaipur-456 Km
Jaipur-140 Km	Hisar-200 Km
New Delhi-300 Km	Agra-380 Km
Ajmer-227 Km	Kota-399 Km
Jodhpur-299 Km	

TRANSPORTATION

Buses are frequently available from Main Bus Stand, Sindhi Camp, Jaipur for Jaipur-Bikaner Route.

For Schedule of Trains, please visit:
www.indianrail.gov.in

NEARBY AIRPORTS: JAIPUR, NEW DELHI, JODHPUR, UDAIPUR.

IN & AROUND LAKSHMANGARH

HOTEL AASHISH-LAKSHMANGARH	: 01573-232958, 09772020902
HOTEL DESERT INN-LAKSHMANGARH	: 01573-232170, 09828100216, 08875270014
HOTEL MANGLAM-LAKSHMANGARH	: 08875767330, 07597772844
HOTEL RAISINA HILL, SIKAR	: 01572-272727, 09352812525
HOTEL SALONA-LAKSHMANGARH	: 09314348200, 07891123000
HOTEL TULIP-LAKSHMANGARH	: 08233188543, 09314188543
SAWARTHIA SEWA SADAN-SALASAR	: 09667870015, 09950587215, 09352782022



OUR CAMPUS



