



COLLEGE OF HORTICULTURE
VASANTRAO NAIK MARATHWADA KRISHI VIDYAPEETH
PARBHANI 431 402 (MS)

<u>History and development</u>
<u>Growth of Institution</u>
<u>Milestone</u>
<u>Objectives</u>
<u>Mission</u>
<u>Organization & Governance</u>
<u>Mode of Admission UG/PG/Ph.D</u>
<u>System of Education</u>
<u>Curricula Development</u>
<u>Adoption</u>
<u>Physical Facilities</u>

History and Development of the Institution

The main object to start B.Sc. (Hort.) degree programme in marathwada region is to cater the needs of advance knowledge of fruit, vegetable and flower growers of the region and others involved in horticultural industries. The students are trained in recent trends in horticulture. The syllabus is prepared and planned on line with sound practical base. The horticultural graduates today are required to provide technology not only for increasing fruit, vegetables and ornamental plant production but also for reducing post harvest losses and value additions through processing of produce. Increasing export opportunities in horticulture and allied industry sector has additional demands on horticulture education to meet the growing requirement of fruit, vegetable and flower crops. The education in horticulture includes skill and knowledge to meet the challenges of providing increasing employment opportunities to young horticultural graduates in academic institutions and service sector. **The college has well trained staff, class rooms, laboratory, field and some of the infrastructures from College of Agriculture, Parbhani are used.**

Considering the above objectives, the College of Horticulture, Parbhani was started in the year 1984 as a degree programme B.Sc. (Horticulture) under the administrative control of Associate Dean & Principal, College of Agriculture, VNMKV, Parbhani for the students who have passed XIIth Std. (Science), with the intake capacity of 16 students. As per the Govt. Resolution No.AGU 1987/CR-188/20A, dated 18 January 1989 from Maharashtra State (Agricultural & Cooperative Department) in the old building of College of Agriculture. From the year 1996 student intake capacity was increased from 16 to 32 students. At present the intake capacity of the students is increased to 37+ICAR nominee from the year 2010. This college was shifted in the year 2000 in a newly constructed separate building.

The separate DDO powers and administrative control was given to the Professor & Officer Incharge, College of Horticulture, Parbhani from 2005. The Experiential Learning Programme in VIIth and VIIIth semester was included in the syllabus since 2009-10. The students are trained on a Nursery management and Protected cultivation of high value horticultural crops with an object to develop professionalism in horticultural graduates.

During last 29 years twenty six batches have graduated from this college and most of graduates got employment in different seeds companies, Bank and Govt. organizations. Till date 570 students have completed B.Sc. (Hort.) degree programme.



➤ **Academic Institutions and Programmes at a Glance**
Programmes Offered with Duration

UG/PG	Programmes	Duration
UG	B.Sc. (Horticulture)	4 years (8 Semesters)

➤ **Students Intake (yearly) and Turn Out**

College/Degree	Year Started	Approved seats		Turnout	
		Before	Now	Year established	Current year (2013-14)
College of Horticulture B.Sc. (Hort.)	1984	16	37+ICAR	16 (570 till date)	27



➤ **Present Status of Institution**

At present the College of Horticulture is running B.Sc. (Hort.) degree programme which includes courses in fruit science, vegetable science, floriculture and landscape gardening, post-harvest technology. Soil science and agri. chemistry, Agronomy, Agril. meteorology, Agril. Engineering, plant pathology, microbiology, entomology, botany, economics, extension along with ELP modules are also included.

The college has well-established laboratories of post-harvest technology, plant pathology and entomology. A well-equipped computer laboratory is also established with software facilities and fax machine. A reading room with sufficient books has been created in College building with sufficient number of books. Common examinations are conducted in a spacious examination hall equipped with closed circuit camera. Three digital classrooms are also developed recently. For major functions a well-equipped hall with Audio-video facilities has been developed. A separate hostel building with accommodation capacity of 80 students is made available.

A Experiential learning - unit for hands on training on Protected cultivation of high value crops" has been sanctioned to this college in the year 2006-07 amounting to Rs.70.00 lakhs sanctioned by ICAR, New Delhi. It is useful for the training of students and farmers.

The college has other important facilities like playground, Gymkhana, National Service Scheme unit, Training and Placement Units etc. The different scholarships like GOI, Freedom fighter, National merit, Merit, ICAR, NTS etc. are made available to the students. Different types of extension education activities such as farmers rallies, field visits, radio talks, training programmes, workshops are attended by the staff members of this college in order to meet the goal of extension activities.

Mission and Goals

➤ **Mandate of the Institution**

The institute is working with three mandates viz. education, research and extension. The institute imparts quality education and conducts applied research and transfers the technologies of horticulture science to the farmers and students.

➤ **Mission Statement**

To impart professional knowledge & skills to the students to empower them for self-employment

➤ **Goals**

- To meet the needs of farmers, industry, R & D organization and education institutions.
- To develop capabilities to face the challenge and overall to excel students in their profession.
- Continuing education to impart for horticulture on socio-economic systems in the light

of global technology changes.

➤ **Current mission, Goals, and objectives**

- To educate graduates in the field of horticulture so as to prepare them for careers in the horticulture science in which they will become leaders in industry and the profession.
- To Upgrade the laboratories and infrastructure facilities for providing quality education.
- To conduct need based quality research by applying horticulture principles to solve problems of horticulture and agricultural system and also making sincere efforts to transfer the technologies for empowerment of students and farmers.

➤ **Objectives**

- To impart knowledge and skills to students.
- To impart education, and entrepreneurial skills to increase fruit, vegetable and floricultural production and also value additions through processing of produce by reducing post-harvest losses.

➤ **Future goals and Objectives**

- To update the faculty by exposing them to higher studies.
- To upgrade the laboratories of Institute
- To establish Institute –Industry linkage..

Organization and Governance

➤ **Authorization**

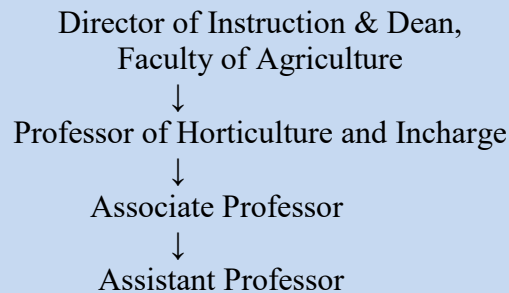
Professor & Officer Incharge of the College is authorized to guide and monitor the working of the institute.

➤ **Authorities, and their composition, powers and responsibilities**

The Faculty follows the Maharashtra Agricultural Universities (KrishiVidyapeeth) Statutes resolved in the year 1990.

- **Organizational Structure**

Professor & Officer Incharge



➤ **Adoption of ICAR Model Act and Guidelines**

The faculty has fully adopted ICAR model act and guidelines for implementation of all educational, research and extension programmes.


Academic Programmes and Curricula

➤ **UG programmes**

The College of Horticulture with four-year degree programme commenced from 1984. The intake capacity was 37+ ICAR nominee and the students passed from XII standard in 10+2 pattern or equivalent were admitted. The degree programme was designed to have first year multidisciplinary education in different branches of Agriculture and Allied Science, and basic courses of. The total credit load was 160. With changing trends the curricula was refurbished in 2007. The fixed course constitute 140 credit loads for the first three years; and in the seventh and eighth semester, a student will be required to have a 20 credit hours each in ELP courses. The recommended new curriculum also includes courses on computer programming, entrepreneurship development, communication skills, agri-business management, besides modifying the basic horticulture courses taking into account the technological developments that have taken place during the last decade. Further, the courses and the in-plant- training will help to instill greater confidence and improve

the employment opportunities of the horticulture graduates. In-plant training for a period equivalent to two semester (Seventh and Eighth semester) are given to student.

➤ **Eligibility for Admission**



Particulars of Examination	UG
Qualifying Examination	10+2 Science & equivalent
Entrance Examination	ICAR
Others (Specify)	Merit basis

➤ **Mode of Admission**

Central admission at MCAER level is done for UG Selection for admission of new candidates to the first semester of undergraduate courses is made in accordance with the regulations made by MCAER, Pune from time to time

➤ **Academic Regulations**

Academic regulations formulated by the University are followed and time-to-time minor revisions are made which are approved by the Statutory Bodies.

➤ **Curricula Development / Revision Process**

The course curriculum of Horticulture is revamped in 2007. The Curriculum is modified for incorporating cafeteria courses and In-Plant training Programme.

➤ **Adoption of ICAR Model Curricula and Deviations**

The College has adopted the curriculum approved by the ICAR with 20 per cent changes as per the regional needs.

Physical Facilities

➤ Institutional Area and Farm land-

Total Land Area (Approx. 30000 sq.mt.)

Academic Campus 17 ha

Farm 15 ha

Irrigated land in hectare 20 ha

- (Area and per cent of total farm)

Administrative Building / Block / Space



Facility	Sq.mt.
Academic building	1000 sq.m
Students hostels	1600 sq m
Housing for staff	299.00 sq.m
Play – ground	13410 sq.
Administrative buildings	-
Open spaces	-
Gardens and farms	2 ha
Cattle sheds	Nil
Health facilities	Nil
Library	-
Irrigation infrastructure/ Micro Irrigation Field Laboratory	2.00 ha
Others	
Total	2.00

➤ **Students' hostel for men and women**

Boys hostel with an area of 1600 sq meter is within the college campus.

Instructional Farm (SRO Pomology, Vegetable Scuebce, Agriculture) Available

Green house, Glass house, Polly house, etc. Available

Farm power, Farm machines and equipment,
and Irrigation Infrastructure Available

➤ **Classroom and Laboratories**

Sr. No.	Particulars	Availability			
		No. of unit	Plinth Area (Sq.m)	Capacity if applicable	Adequate
1.	Administrative offices	01	1000	-	
	Classrooms				
2.	Laboratory	4	800	40	Yes
3.	Library	02	400	20	Yes
4.	Housing for faculty	-	-	-	-
5.	Boy's hostel	-	-	--	-
6.	Girls' hostel	1	1600	120	Yes
7.	Sports playground	-	00.00	--	-
8.	Guest house	-	-	--	-
9.	Canteen	-	00.00	--	-
10.	Health clinics	-	-	--	-

11.	Workshop	0	00.00	--	-
12.	Faculty club	-	-	--	---
13.	Auditorium	--	00.00	--	-
14.	Others seminar hall	-	-	--	--
15.		1	-	--	-

➤ **Facilities for Sports, Games, Cultural and Literary Activities**

The sports and games facilities available in the Gymnasium of Students Welfare Office are being utilized by the students. For cultural and literary activities an examination hall available in the faculty is used.

➤ **Any other Important Facility**

Students placement Cell at college level is available.

➤ ***Adoption of ICAR Norms and Deviations, if any***



COLLEGE INFRASTRUCTURE FACILITIES



COLLEGE BUILDING



PRACTICAL LABORATORY



INSTRUCTIONAL FARM



GLIMPSES OF COLLEGE ACTIVITIES





WEL COME FUNCTION



PRACTICAL CLASS ON JELLY PREPARATION



VERMICOMPOST UNIT



NSS-PARTHENIUM ERADICATION CAMPAIGN



ELP ACTIVITIES



Dr.Srikant Deshpande Secretary Governor office

Dr.S.D More Ex DI & Dean